

1 TPE 65-410/2 S-A-F-A-BQQE-MD1



: 99114672

12756. Pipework connection is via PN 16 DIN flanges (EN 1092-2 and ISO 7005-2).

IE5

IEC 60034-30-2.

EN

Frequency converter:

: -25 .. 120 °C
: 20 °C
: 998.2 / 3

: 2910 /

: 56.3 3/
: 33.6
: 172
: BQQE
- : ISO9906:2012 3B2

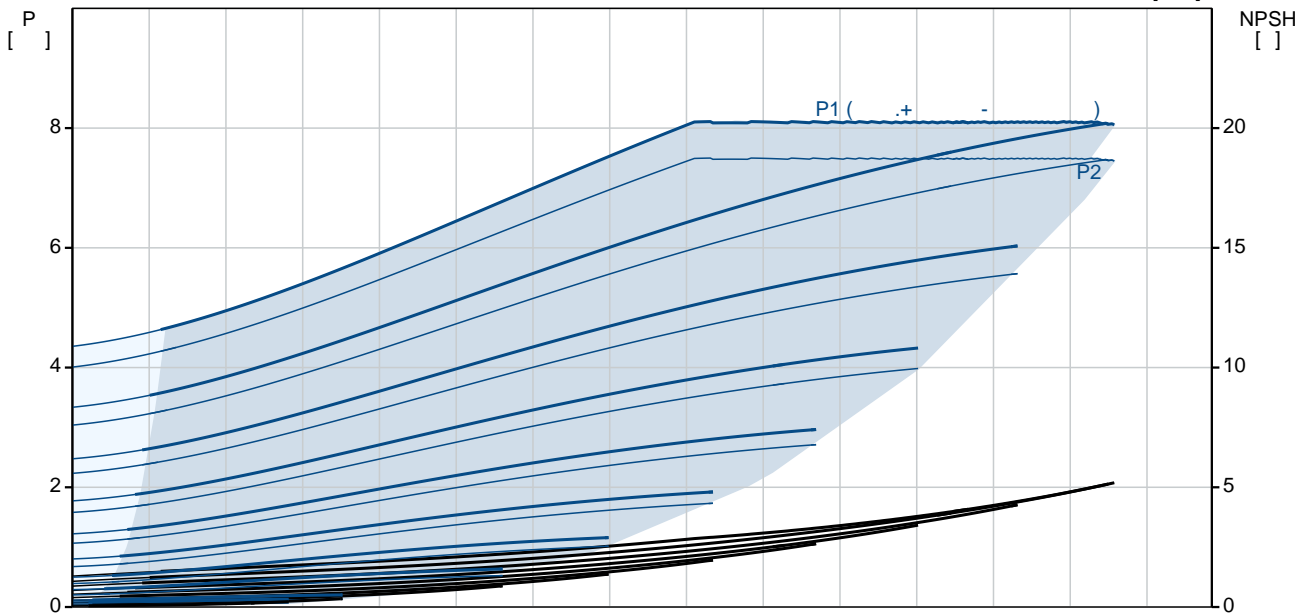
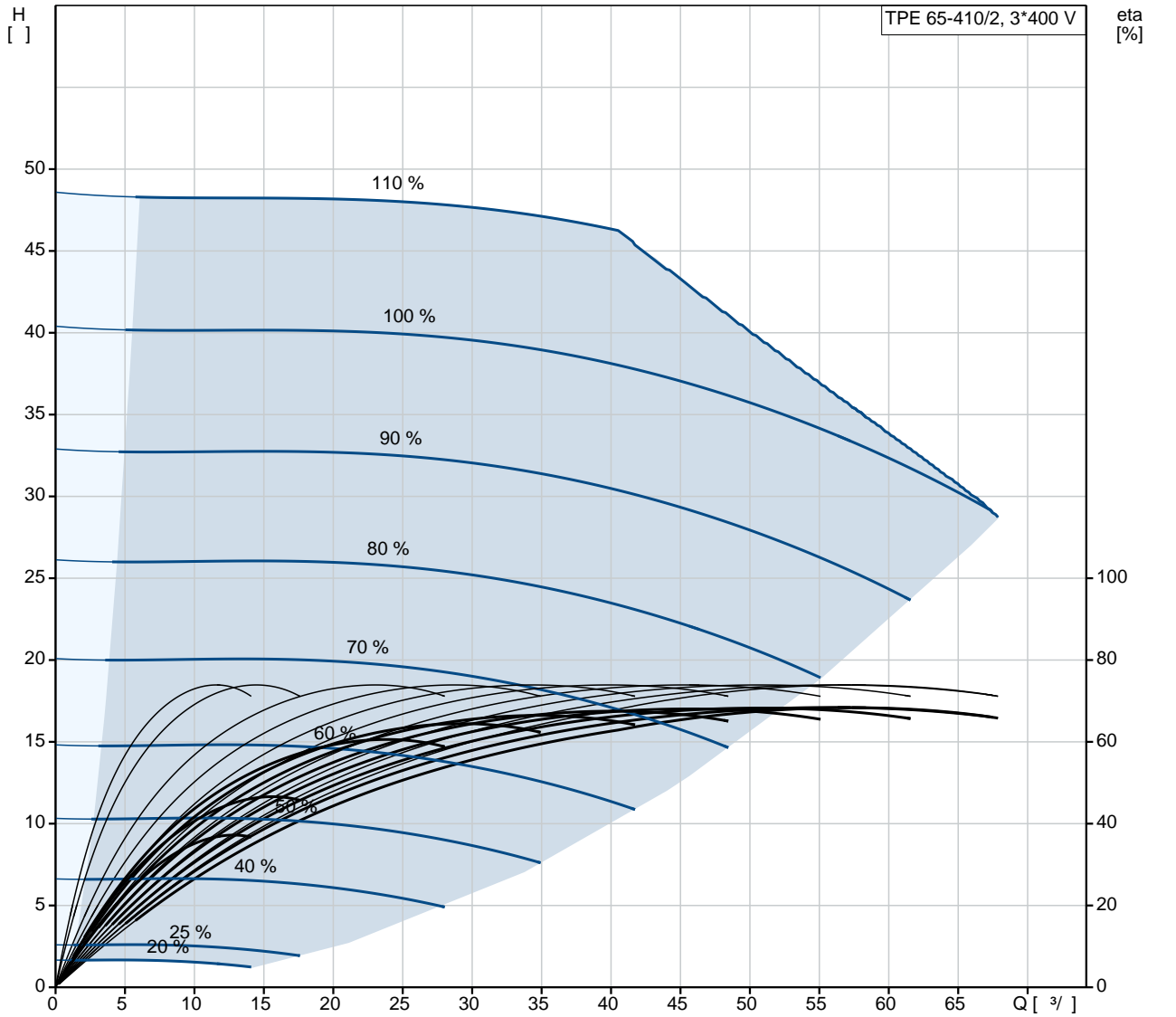
c : EN-GJL-250
: ASTM class 35
: EN/DIN: EN-GJL-200
, AISI/ASTM: ASTM class 30

: -20 .. 50 °C

: 16

- : 16 / 120 °C
 : DIN
 : DN 65
 : PN 16
 : 360
 : FF265
 :
 : 132SF
 - : IE5
 - P2: 7.5
 : 50 Hz
 : 3 x 380-500
 : 14.1-11.2 A
 Cos - : 0.93-0.89
 : 360-4000 /
 : 92.5%
 : 92.5 %
 : 2
 (IEC 34-5): IP55
 (IEC 85): F
 : 98971272
 :
 , MEI : 0.70
 (): 93.2
 (): 108
 : 0.38 ³
 Danish VVS No.: 381944410
 Finnish LVI No.: 4616394
 Norwegian NRF no.: 9043622
 C : RU
 : 8413705100

99114672 TPE 65-410/2 S-A-F-A-BQQE-MD1 50



TPE 65-410/2
S-A-F-A-BQQE-MD1
99114672
EAN : 5712607033705

2910 /
56.3 ³/_l
33.6
410
172

BQQE
ISO9906:2012 3B2
A

EN-GJL-250
ASTM class 35

EN/DIN: EN-GJL-200
AISI/ASTM: ASTM class 30
A

-20 .. 50 °C

16
16 / 120 °C

DIN
DN 65
PN 16
360
FF265
F
-25 .. 120 °C

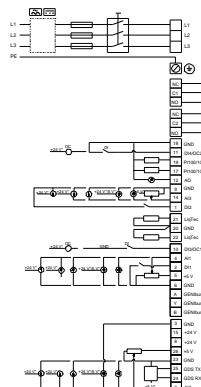
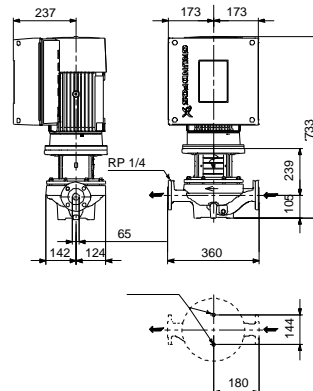
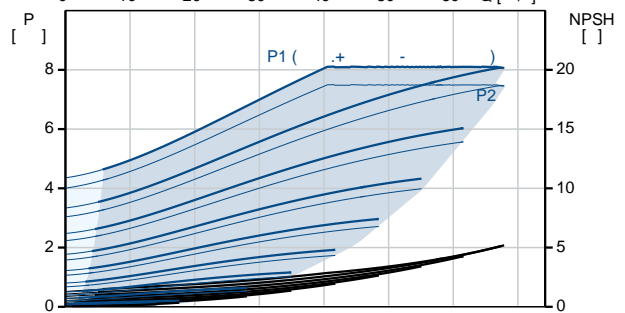
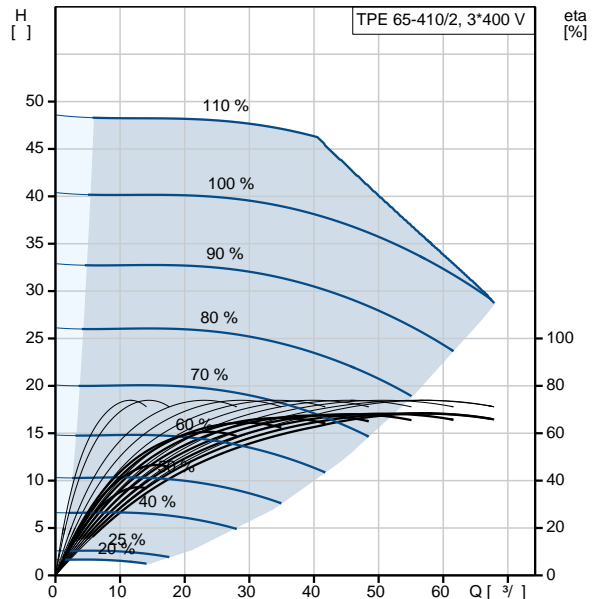
20 °C
998.2 / ³

132SF
IE5
- P2: 7.5
50 Hz
3 x 380-500
14.1-11.2 A

Cos : 0.93-0.89

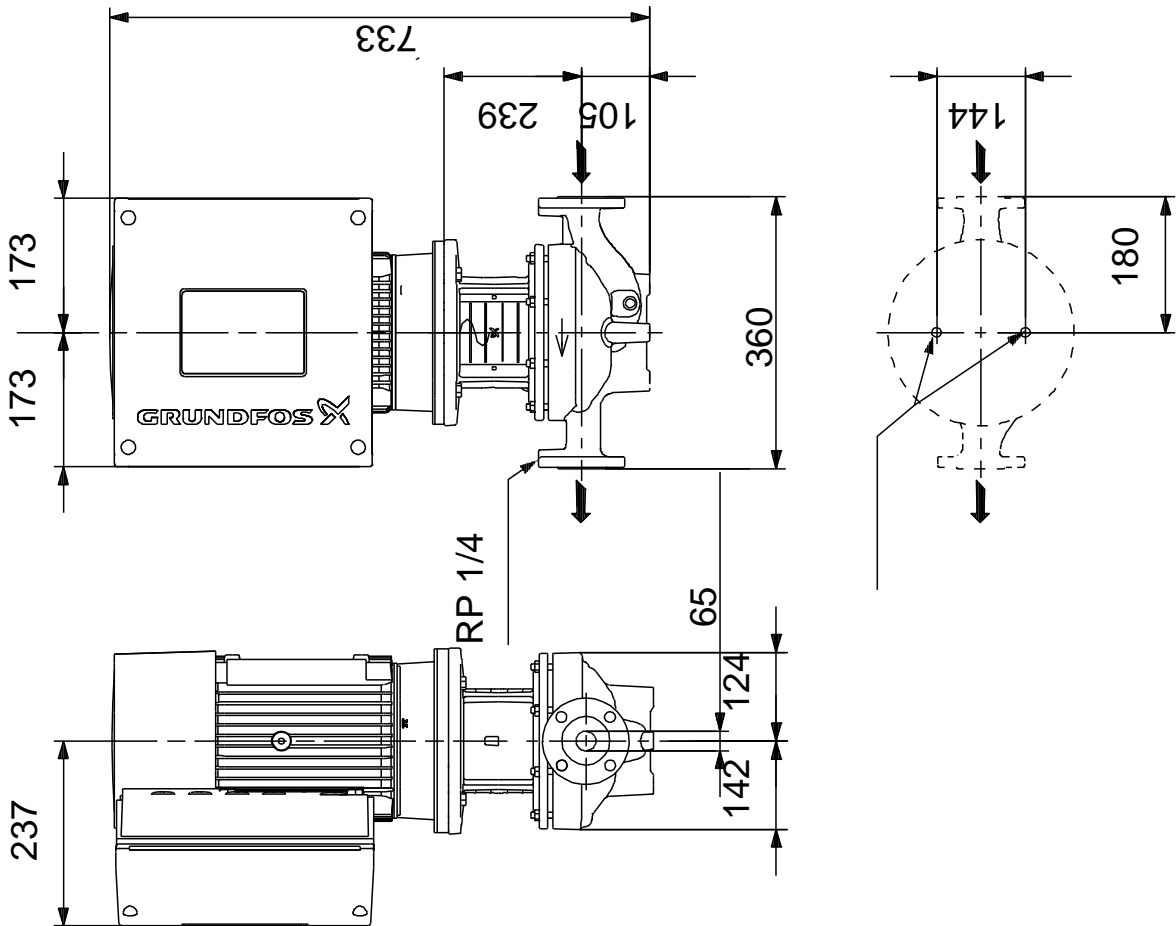
360-4000 /
92.5%
92.5 %

2
(IEC 34-5): IP55
(IEC 85): F

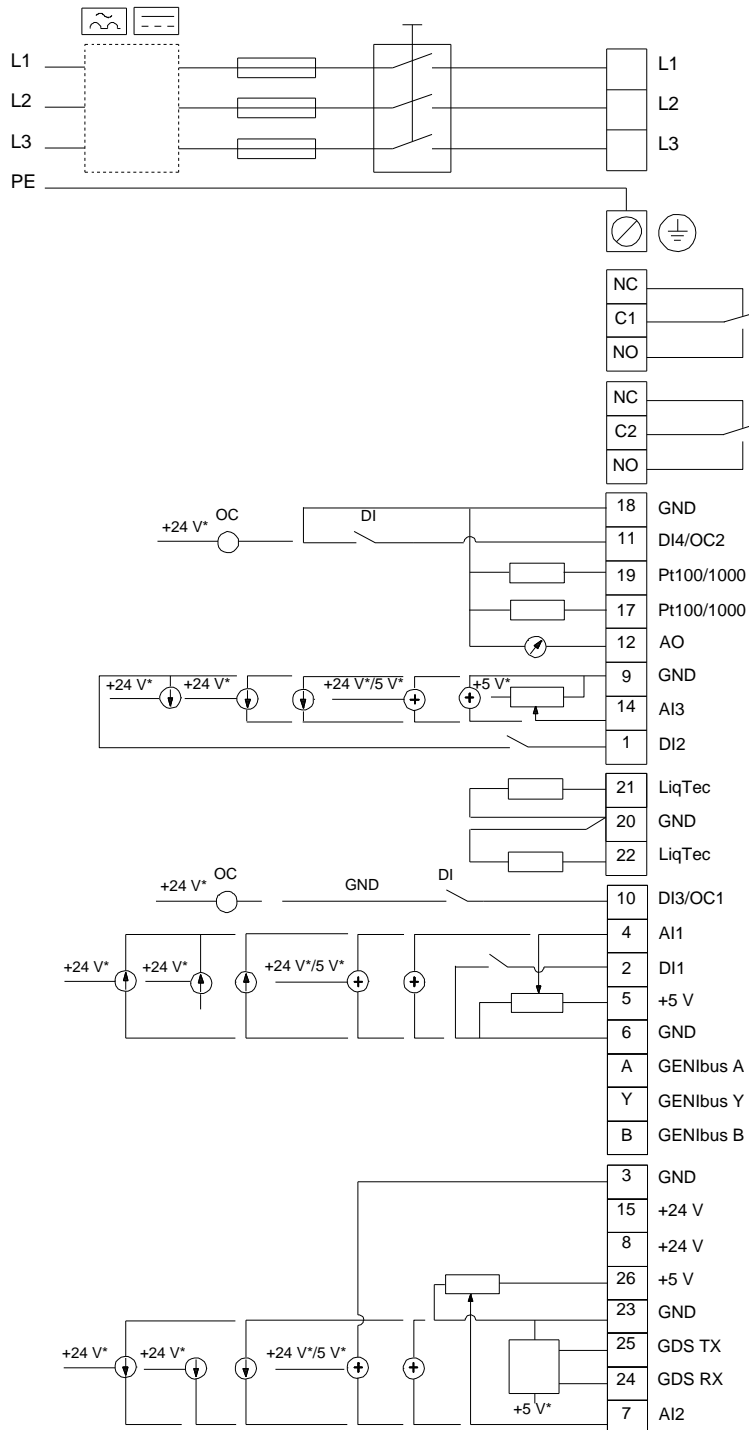


	:	ELEC
	:	98971272
	:	HMI300 -
	:	FM300 - Advanced
	:	()
	:	
	:	
	, MEI :	0.70
():		93.2
():		108
	:	0.38 ³
Config. file no:		99247887
Danish VVS No.:		381944410
Finnish LVI No.:		4616394
Norwegian NRF no.:		9043622
C :		RU
	:	8413705100

99114672 TPE 65-410/2 S-A-F-A-BQQE-MD1 50



99114672 TPE 65-410/2 S-A-F-A-BQQE-MD1 50



!

[], .