

1 TPE 80-180/2 A-F-A-BQQE-JD1



: 99113947

12756. Pipework connection is via PN 16 DIN flanges (EN 1092-2 and ISO 7005-2).

EN

IE5

IEC 60034-30-2.

Frequency converter:

: -25 .. 120 °C
: 20 °C
: 998.2 / ³

: 2910 /

: 57.8 ³/
: 13.7
: 115
: BQQE
- : ISO9906:2012 3B2

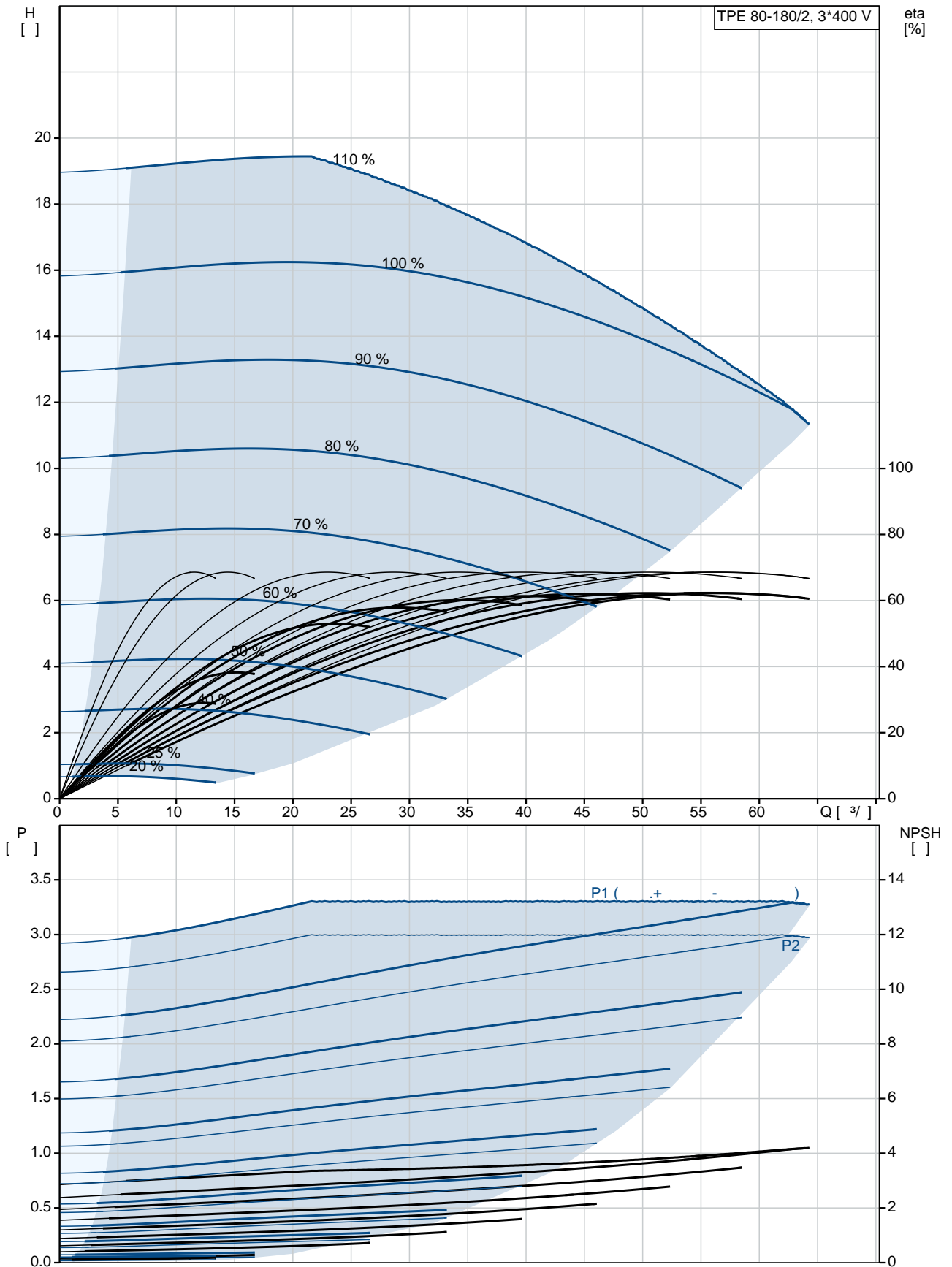
c : EN-GJL-250
: ASTM class 35
: EN/DIN: EN-GJL-200
, AISI/ASTM: ASTM class 30

: -20 .. 50 °C

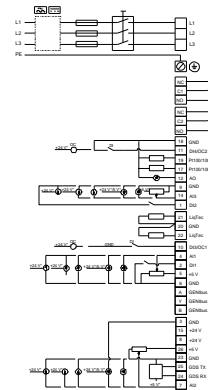
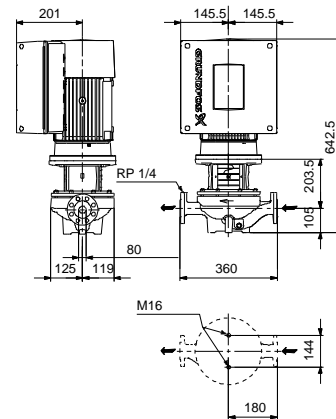
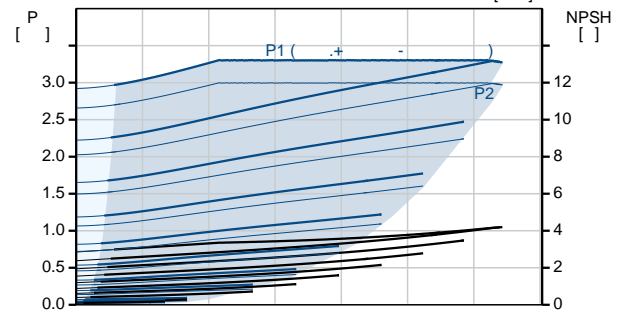
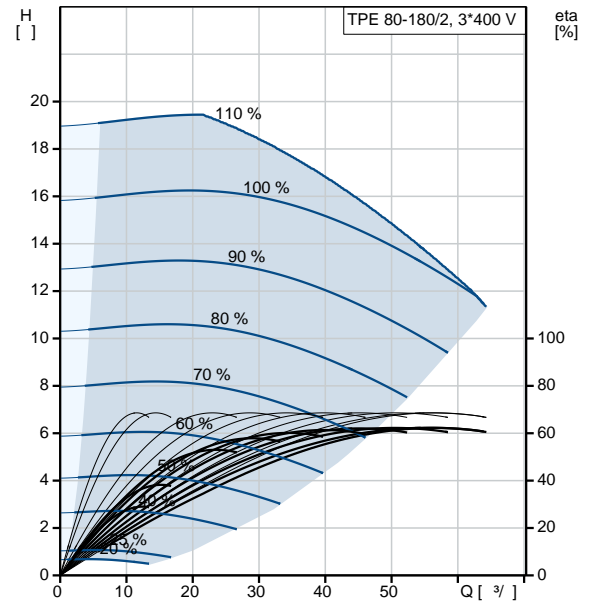
: 16
- : 16 / 120 °C
: DIN

: DN 80
 : PN 16
 : 360
 : FF215
 :
 : 100LA
 - : IE5
 - P2: 3
 : 50 Hz
 : 3 x 380-500
 : 5.80-4.80 A
 Cos - : 0.91-0.86
 : 360-4000 /
 : 90.7% : 90.7 %
 : 2
 (IEC 34-5): IP55
 (IEC 85): F
 : 98971186
 :
 , MEI : 0.69
 (): 66.5
 (): 81
 : 0.38 ³
 Danish VVS No.: 382065180
 Finnish LVI No.: 4616479
 Norwegian NRF no.: 9043665
 C : RU
 : 8413705100

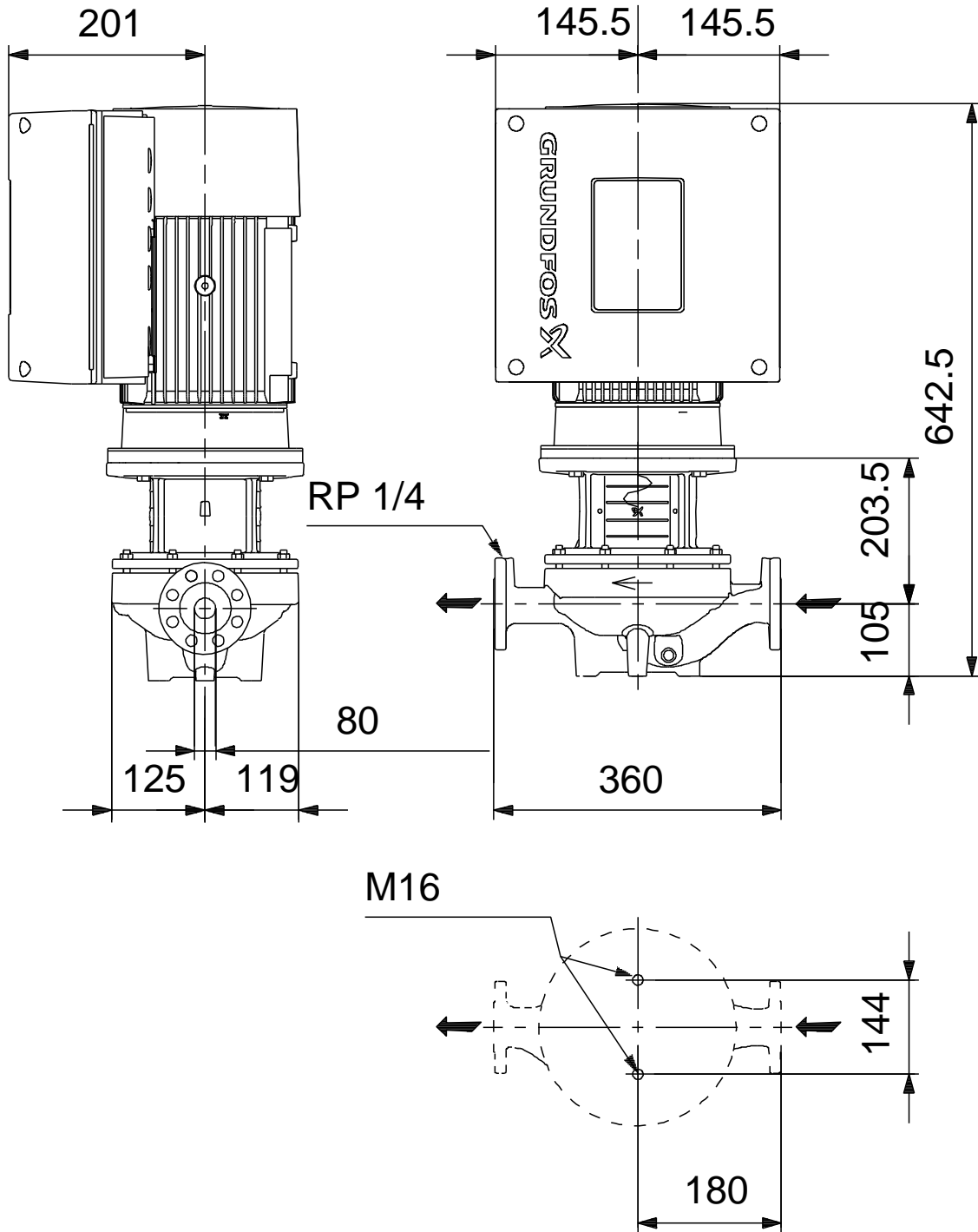
99113947 TPE 80-180/2 A-F-A-BQQE-JD1 50



TPE 80-180/2	
A-F-A-BQQE-JD1	
99113947	
EAN	5712607020255
	2910 /
	57.8 ³ /
	13.7
	180
	115
	BQQE
	ISO9906:2012 3B2
	A
c	EN-GJL-250
	ASTM class 35
	EN/DIN: EN-GJL-200
	AISI/ASTM: ASTM class 30
	A
	-20 .. 50 °C
	16
	16 / 120 °C
	DIN
	DN 80
	PN 16
	360
	FF215
	F
	-25 .. 120 °C
	20 °C
	998.2 / ³
	100LA
	IE5
- P2:	3
	50 Hz
	3 x 380-500
	5.80-4.80 A
Cos	0.91-0.86
	360-4000 /
	90.7%
	90.7 %
	2
(IEC 34-5):	IP55
(IEC 85):	F



99113947 TPE 80-180/2 A-F-A-BQQE-JD1 50



99113947 TPE 80-180/2 A-F-A-BQQE-JD1 50



!

[], .