

1 TPD 32-60/2 A-F-A-BQQE-CX1



: 98957949

ISO 7005-2).

EN 12756. Pipework connection is via PN 6/10 DIN flanges (EN 1092-2 and

Frequency converter:

: -25 .. 120 °C  
: 20 °C  
998.2 / 3

: 2890 /

: 6.5 3/  
4  
: 64  
: BQQE  
- : ISO9906:2012 3B2

c : EN-GJL-250  
ASTM class 35

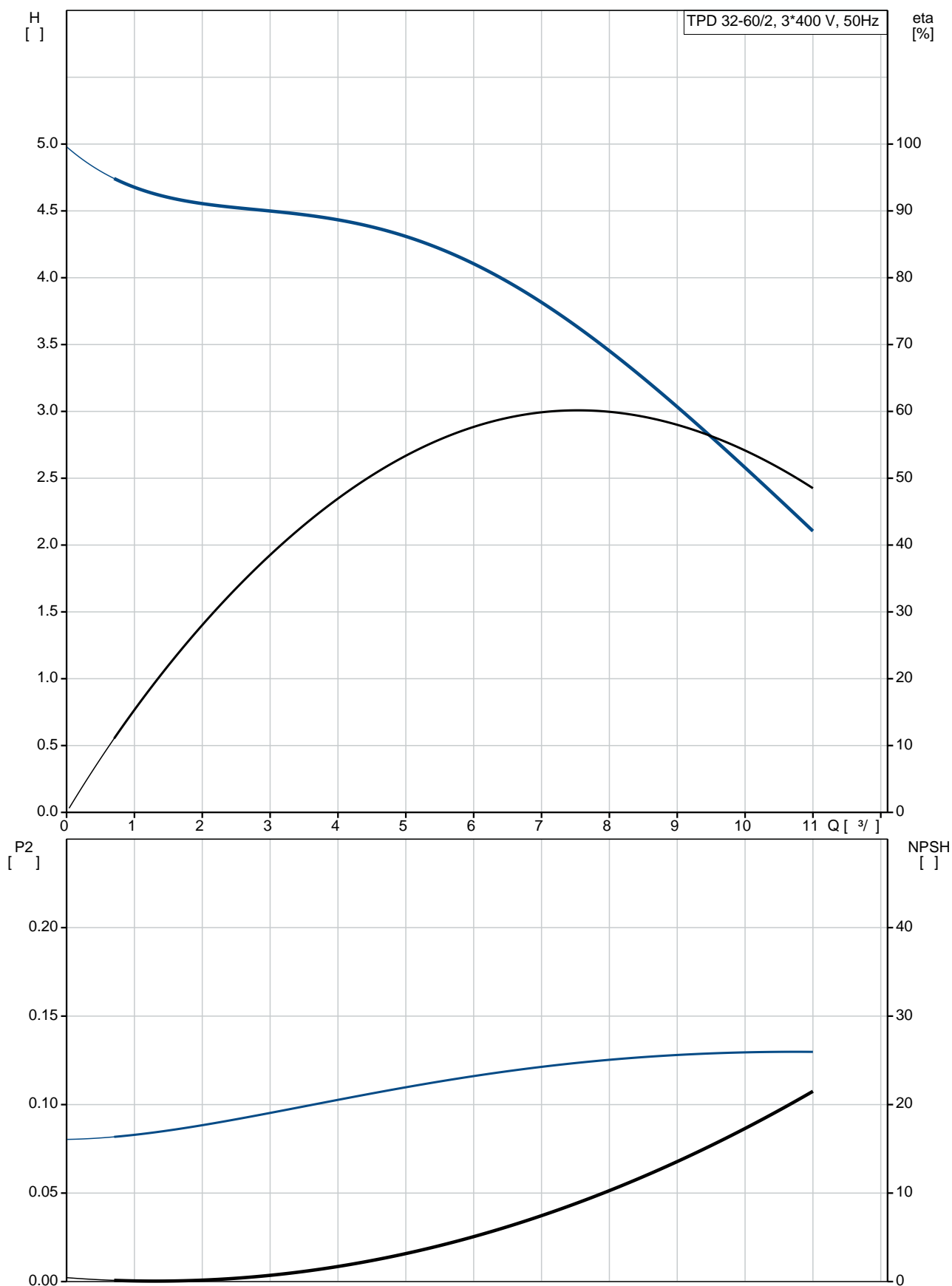
, EN/DIN: EN 1.4301  
, AISI/ASTM: AISI 304

: -20 .. 40 °C

: 10  
- : 10 / 120 °C

: DIN  
 : DN 32  
 : PN 6/10  
 : 220  
 : FT75  
 :  
 : SIEMENS  
 - : IE1  
 - P2: 0.25  
 : 50 Hz  
 : 3 x 220-240D/380-415Y  
 : 1.63/0.94 A  
 Cos - : 0.66  
 : 2800-2850 /  
 : IE1 58,2%  
 : 58.2-58.2 %  
 : 2  
 (IEC 34-5): IP55  
 (IEC 85): F  
 : 81602314  
 :  
 , MEI : 0.56  
 ( ): 35.1  
 ( ): 38.6  
 : 0.08 <sup>3</sup>  
 C : HU  
 : 8413705100

## 98957949 TPD 32-60/2 A-F-A-BQQE-CX1 50



16.12.2020

TPD 32-60/2  
A-F-A-BQQE-CX1  
98957949  
EAN : 5712604244166

2890 /  
6.5 <sup>3</sup>/<sub>4</sub>  
4  
60  
64  
BQQE  
ISO9906:2012 3B2  
A

EN-GJL-250  
ASTM class 35

EN/DIN: EN 1.4301  
AISI/ASTM: AISI 304  
A

-20 .. 40 °C  
10  
10 / 120 °C

DIN  
DN 32  
PN 6/10  
220  
FT75  
F

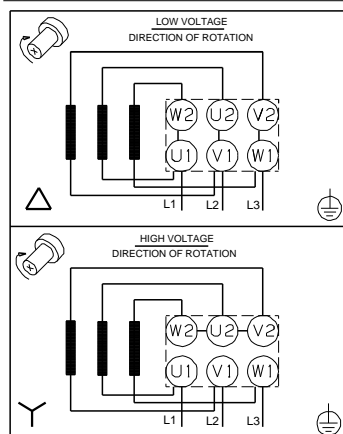
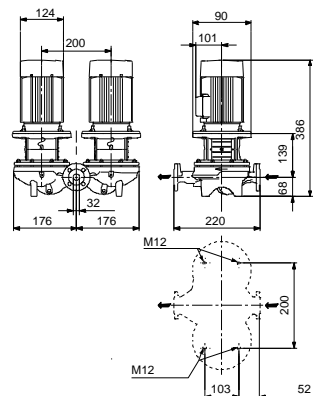
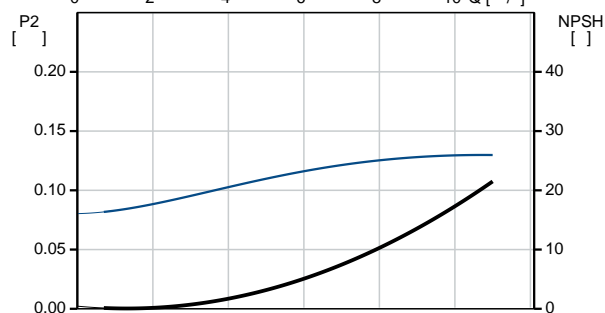
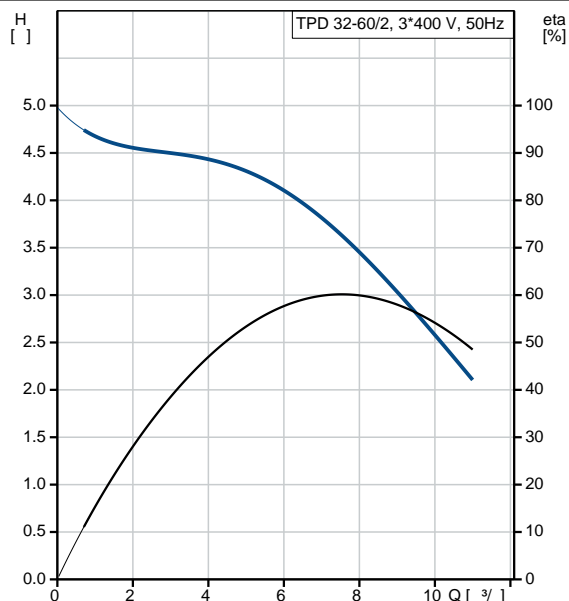
-25 .. 120 °C  
20 °C  
998.2 / <sup>3</sup>

SIEMENS  
IE1

- P2: 0.25  
50 Hz  
3 x 220-240D/380-415Y

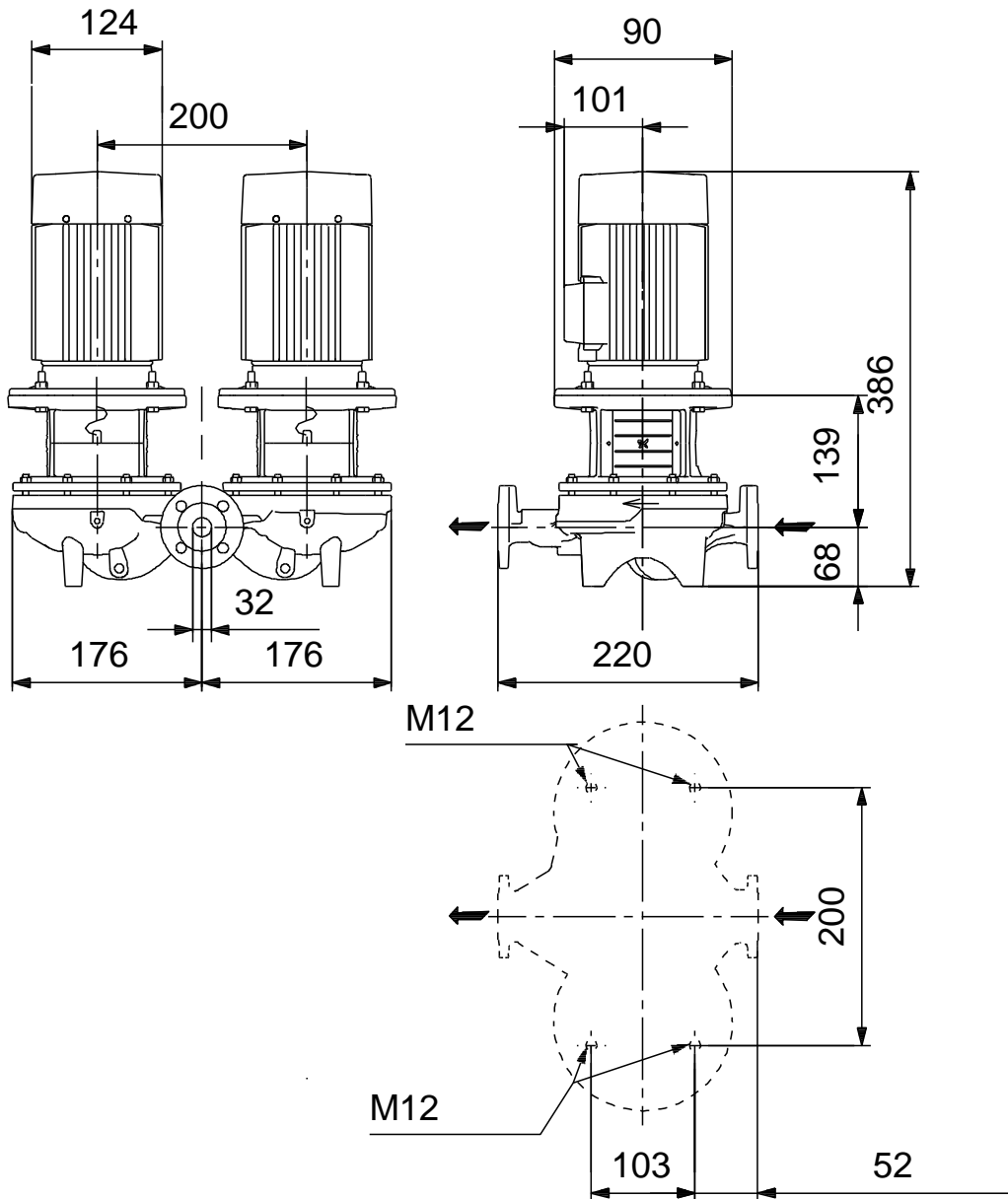
Cos : 0.66  
2800-2850 /  
IE1 58,2%  
58.2-58.2 %

2  
(IEC 34-5): IP55  
(IEC 85): F  
81602314



|      |         |                   |
|------|---------|-------------------|
|      |         |                   |
|      | :       | .                 |
|      |         |                   |
|      | :       |                   |
|      |         |                   |
|      | , MEI : | 0.56              |
| ( ): |         | 35.1              |
| ( ): |         | 38.6              |
|      | :       | 0.08 <sup>3</sup> |
| C    | :       | HU                |
|      | :       | 8413705100        |

## 98957949 TPD 32-60/2 A-F-A-BQQE-CX1 50



## 98957949 TPD 32-60/2 A-F-A-BQQE-CX1 50

