

1 TPE2 D 32-80 N-A-F-A-BQQE-CAB



: 98438555

ISO 7005-2).

EN 12756. Pipework connection is via PN 6/10 DIN flanges (EN 1092-2 and

IEC 60034-30-2.

IE5

Frequency converter:

: -25 .. 120 °C  
: 20 °C  
: 998.2 / <sup>3</sup>

: 3450 /

: 9.2 <sup>3</sup>/  
: 5.8

: 62  
: BQQE  
- : ISO9906:2012 3B2

c : EN-GJL-250  
ASTM class 35

PES+30% GF

: -20 .. 50 °C

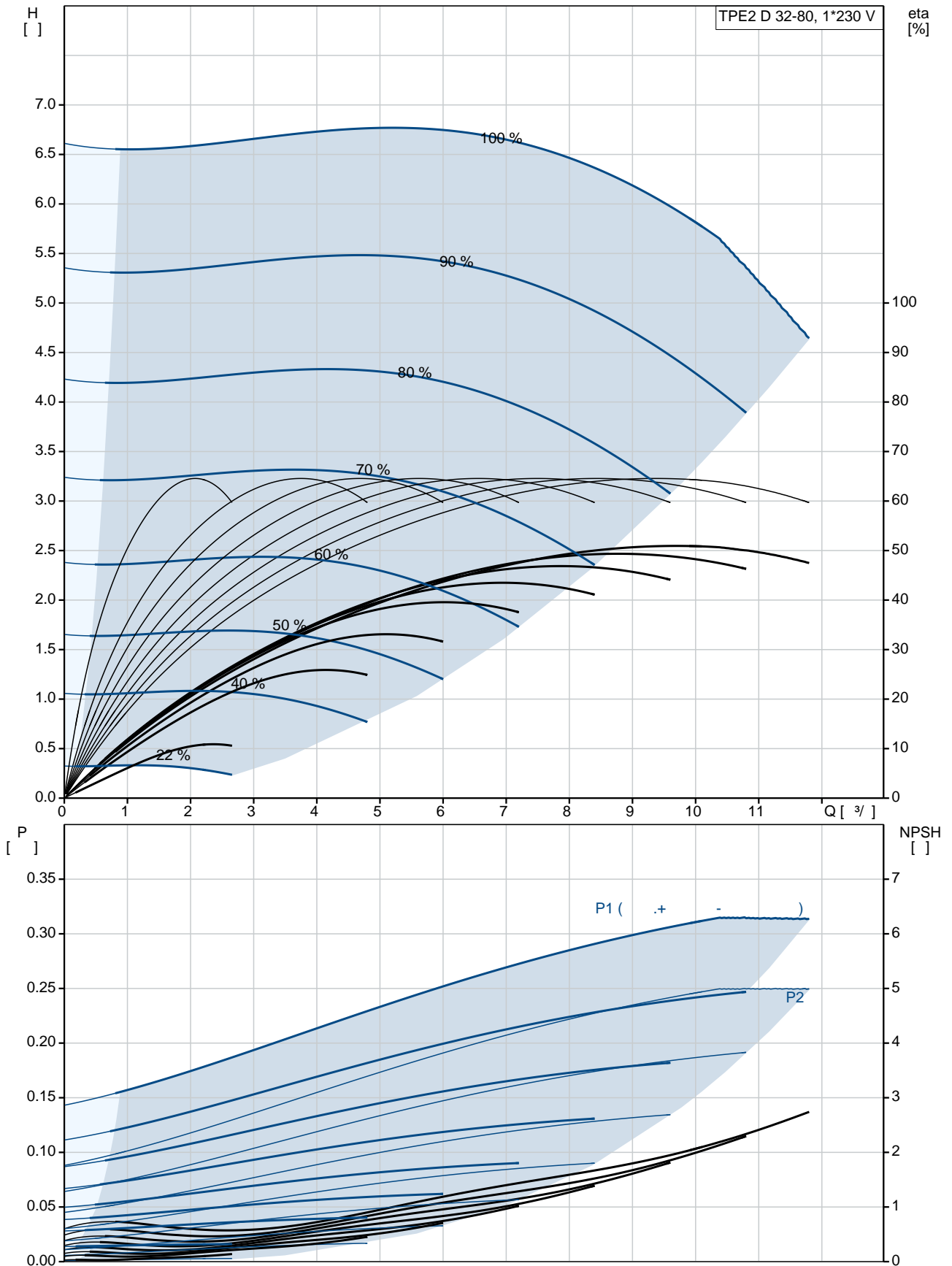
: 10  
- : 10 / 120 °C

: DIN  
: DN 32

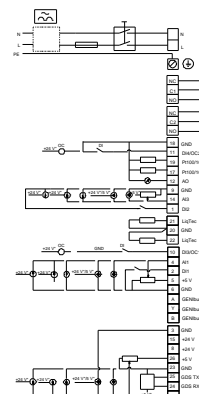
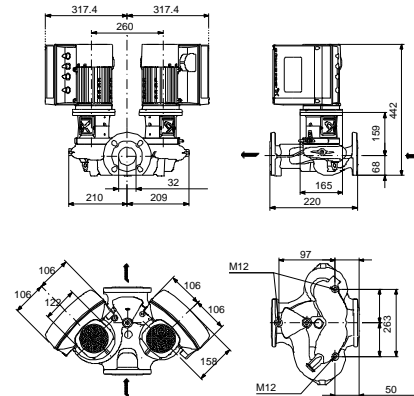
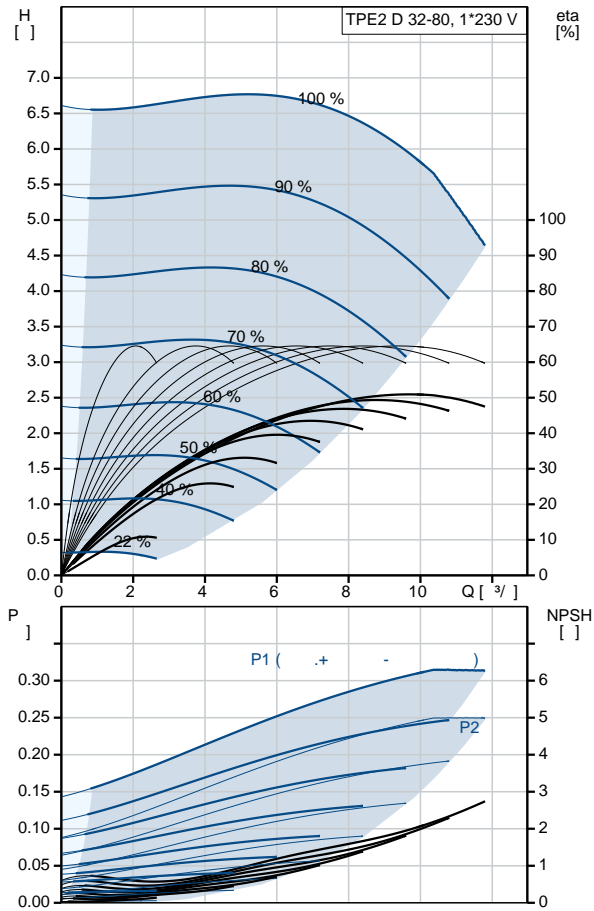
: PN 6/10

: 220  
 : 56C  
 :  
 : 71A  
 - : IE5  
 - P2: 0.25  
 : 50 / 60 Hz  
 : 1 x 200-240  
 : 1.75-1.50 A  
 Cos - : 0.95  
 : 360-4000 /  
 : 81.1%  
 : 81.1 %  
 (IEC 34-5): IP55  
 (IEC 85): F  
 : 99137989  
 :  
 , MEI : 0.7  
 ( ): 45.4  
 ( ): 58.7  
 : 0.25 <sup>3</sup>  
 C : HU  
 : 8413705100

## 98438555 TPE2 D 32-80 N-A-F-A-BQQE-CAB

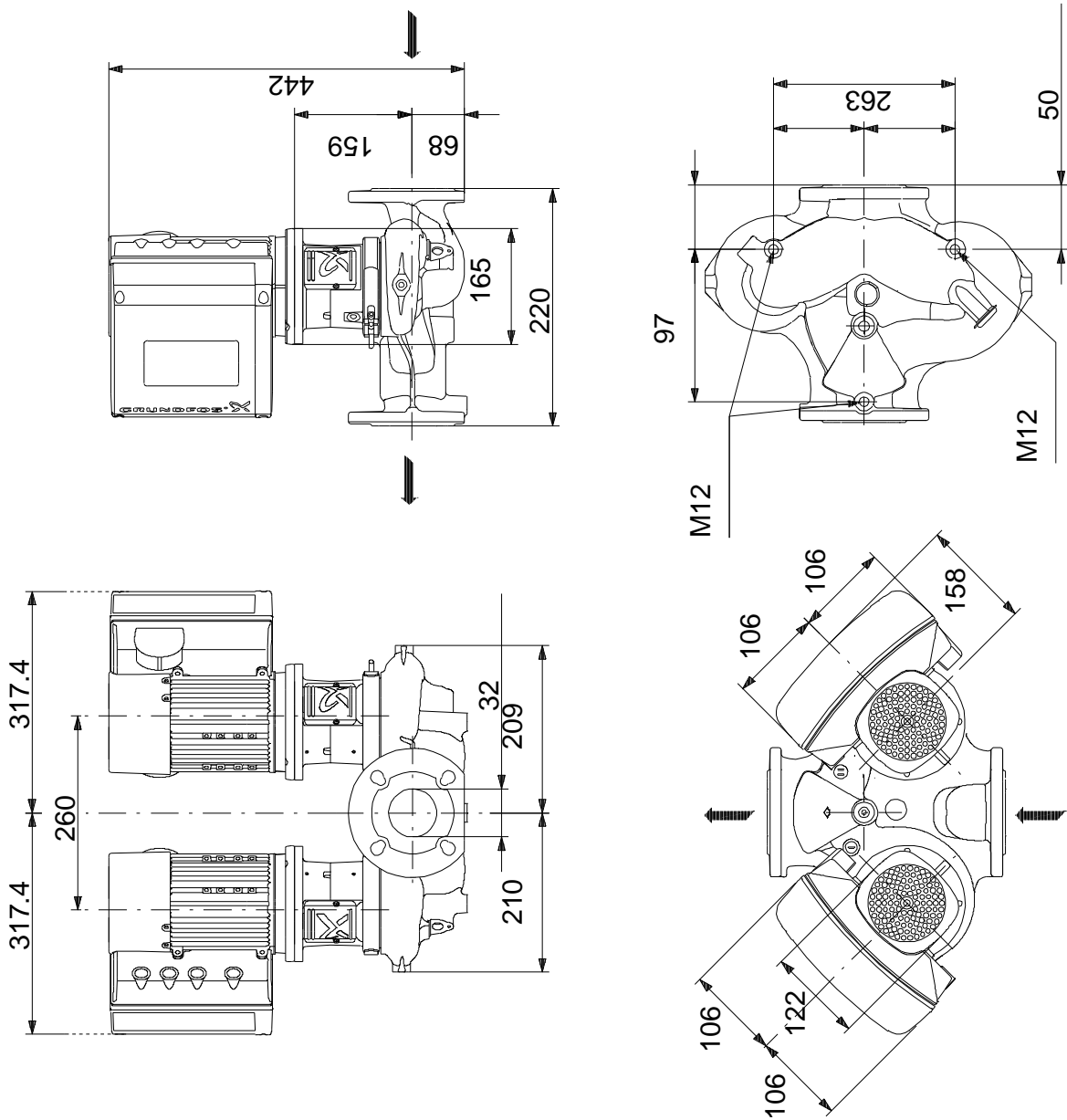


|             |                      |
|-------------|----------------------|
|             | TPE2 D 32-80         |
|             | N-A-F-A-BQQE-CAB     |
|             | 98438555             |
| EAN         | 5711495019594        |
|             | 3450 /               |
|             | 9.2 <sup>3/</sup>    |
|             | 5.8                  |
|             | 80                   |
|             | 62                   |
|             | BQQE                 |
|             | ISO9906:2012 3B2     |
|             | A                    |
| c           | EN-GJL-250           |
|             | ASTM class 35        |
|             | PES+30% GF           |
|             | A                    |
|             | -20 .. 50 °C         |
|             | 10                   |
|             | 10 / 120 °C          |
|             | DIN                  |
|             | DN 32                |
|             | PN 6/10              |
|             | 220                  |
|             | 56C                  |
|             | F                    |
|             | -25 .. 120 °C        |
|             | 20 °C                |
|             | 998.2 / <sup>3</sup> |
|             | 71A                  |
|             | IE5                  |
| - P2:       | 0.25                 |
|             | 50 / 60 Hz           |
|             | 1 x 200-240          |
|             | 1.75-1.50 A          |
| Cos         | 0.95                 |
|             | 360-4000 /           |
|             | 81.1%                |
|             | 81.1 %               |
| (IEC 34-5): | IP55                 |
| (IEC 85):   | F                    |
|             | ELEC                 |
|             | 99137989             |

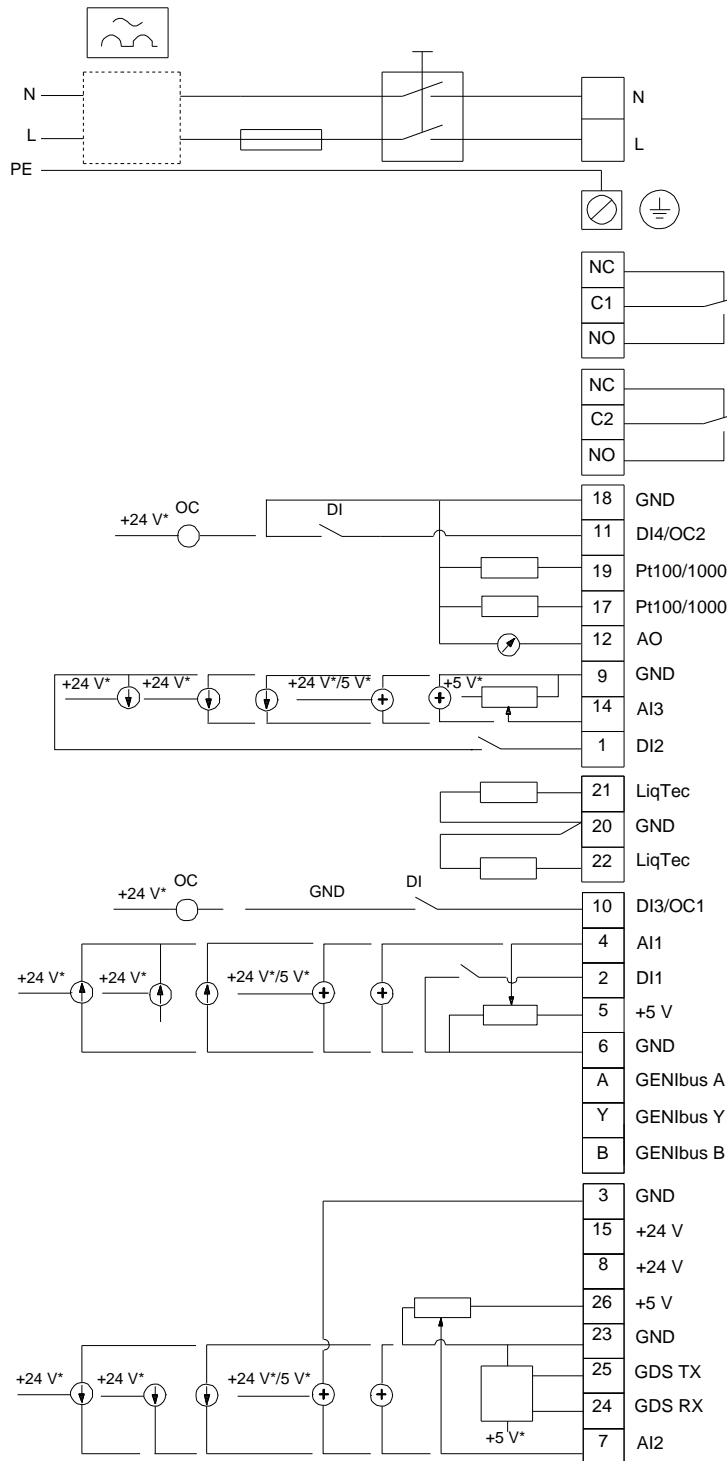




## 98438555 TPE2 D 32-80 N-A-F-A-BQQE-CAB



## 98438555 TPE2 D 32-80 N-A-F-A-BQQE-CAB



! [ ], .