

1 TP 25-90/2 A-O-A-BQQE-DX1



: 98282133

12756.

Frequency converter:

: -25 .. 120 °C
: 20 °C
998.2 / 3

: 2865 /

: 7.88 3/
: 7.93

: 89
: BQQE
- : ISO9906:2012 3B2

c : EN-GJL-200
: ASTM class 30

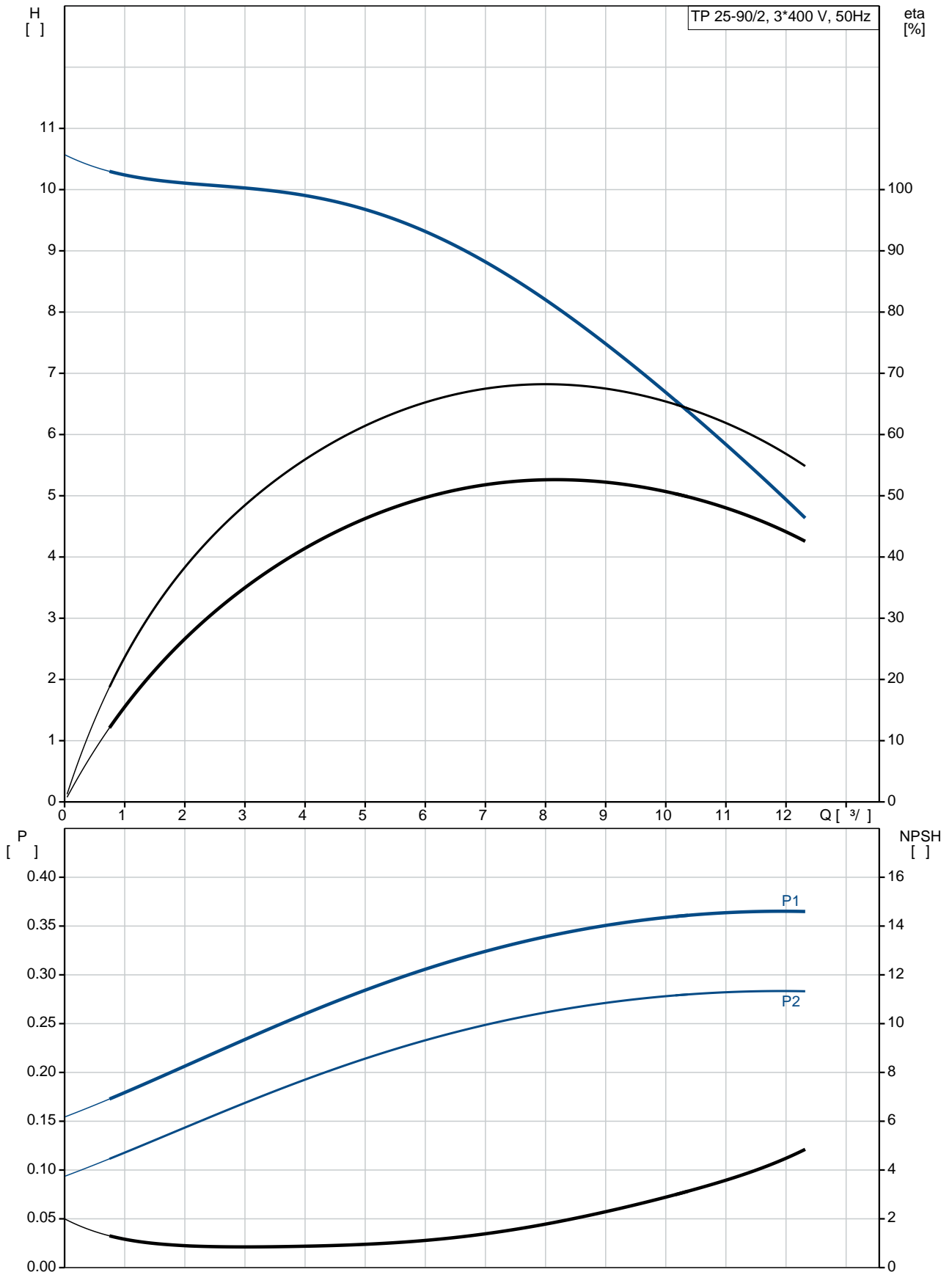
PES+30% GF

: -30 .. 40 °C

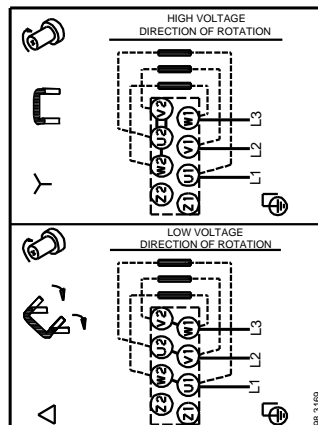
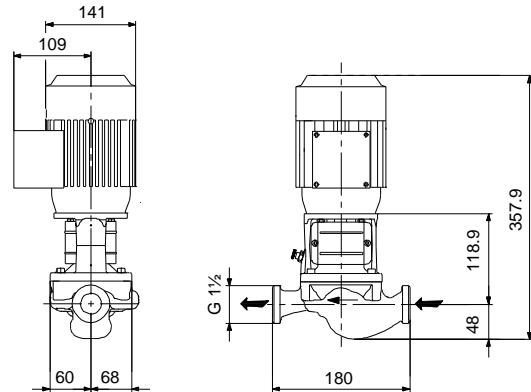
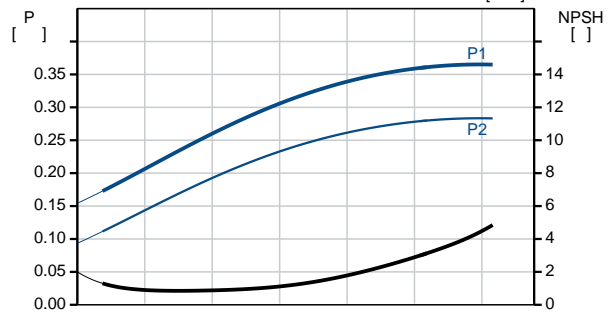
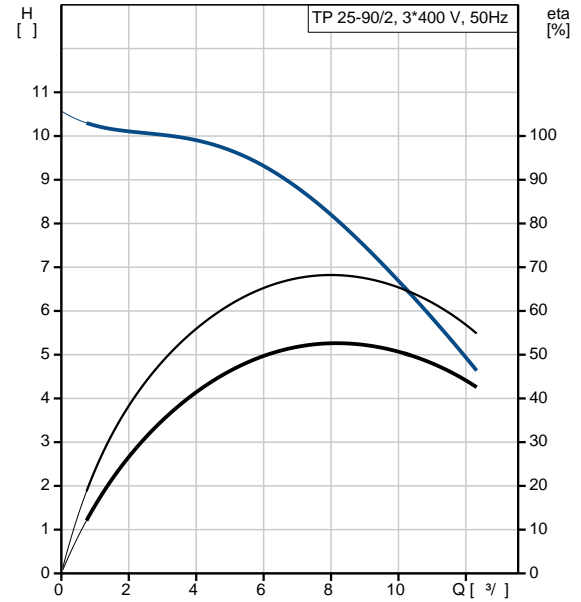
EN

: 10
 : - : 10 / 120 °C
 : G
 : DN 25
 : PN 10
 : 180
 : FT85
 :
 : 71A
 - : IE3
 - P2: 0.37
 : 50 Hz
 : 3 x 220-240D/380-415Y
 : 1.74/1.00 A
 : 490-530 %
 Cos - : 0.80-0.70
 : 2850-2880 /
 : IE3 73,8%
 : 73.8 %
 3/4 : 79.0 %
 1/2 : 75.5 %
 : 2
 (IEC 34-5): 55 Dust/Jetting
 (IEC 85): F
 : 85805102
 :
 : , MEI : 0.70
 (): 10.3
 (): 12.3
 : 0.04 ³
 Danish VVS No.: 381810090
 Finnish LVI No.: 4616003
 Norwegian NRF no.: 9043512
 C : HU
 : 8413705100

98282133 TP 25-90/2 A-O-A-BQQE-DX1 50

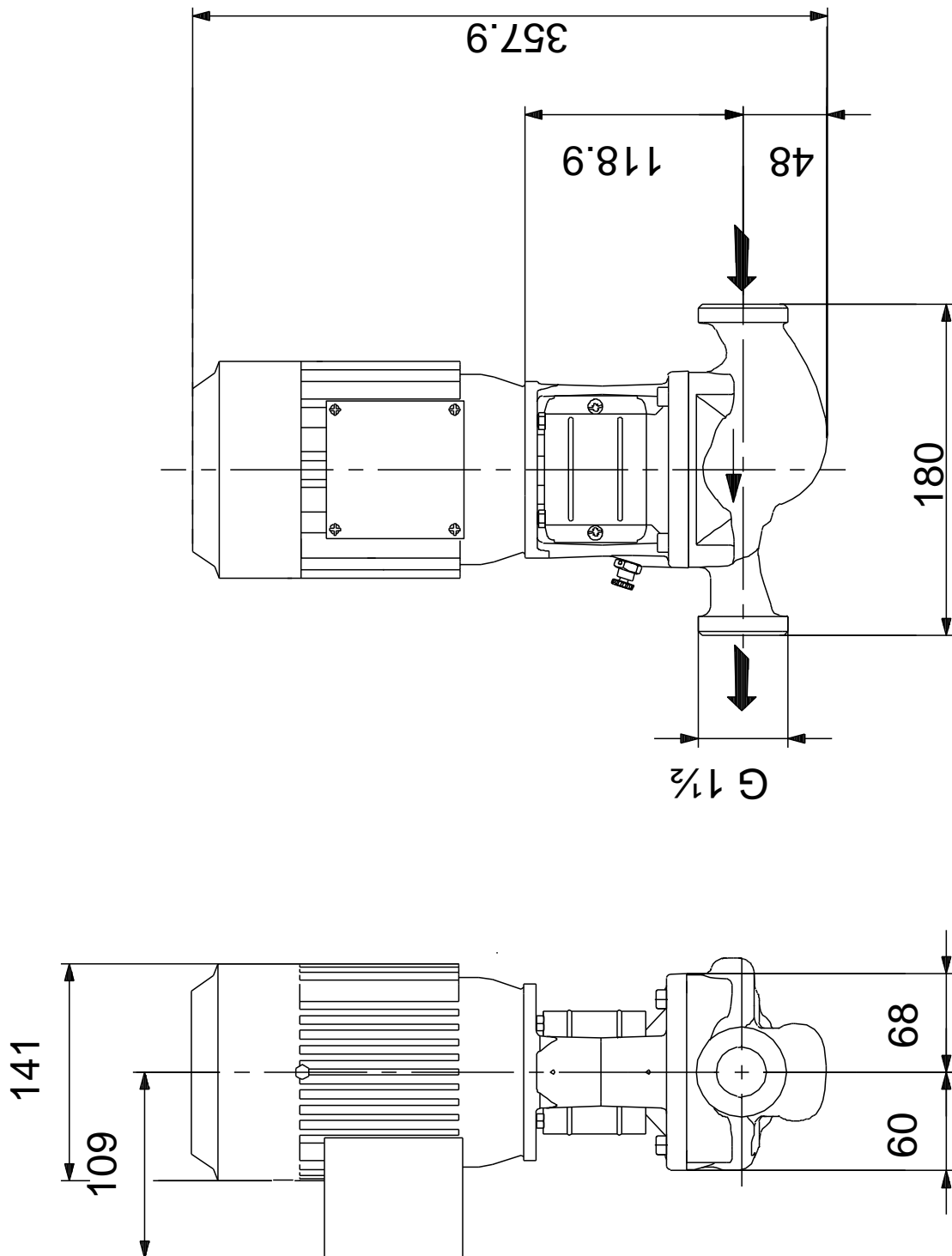


	TP 25-90/2
	A-O-A-BQQE-DX1
	98282133
EAN	5711492397541
	2865 /
	7.88 ^{3/}
	7.93
	90
	89
	BQQE
	ISO9906:2012 3B2
	A
c	EN-GJL-200
	ASTM class 30
	PES+30% GF
	A
	-30 .. 40 °C
	10
	10 / 120 °C
	G
	DN 25
	PN 10
	180
	FT85
	O
	-25 .. 120 °C
	20 °C
	998.2 / ³
	71A
	IE3
- P2:	0.37
	50 Hz
	3 x 220-240D/380-415Y
	1.74/1.00 A
	490-530 %
Cos	0.80-0.70
	2850-2880 /
	IE3 73,8%
	73.8 %
	3/4 79.0 %
1/2	75.5 %
	2
(IEC 34-5):	55 Dust/Jetting

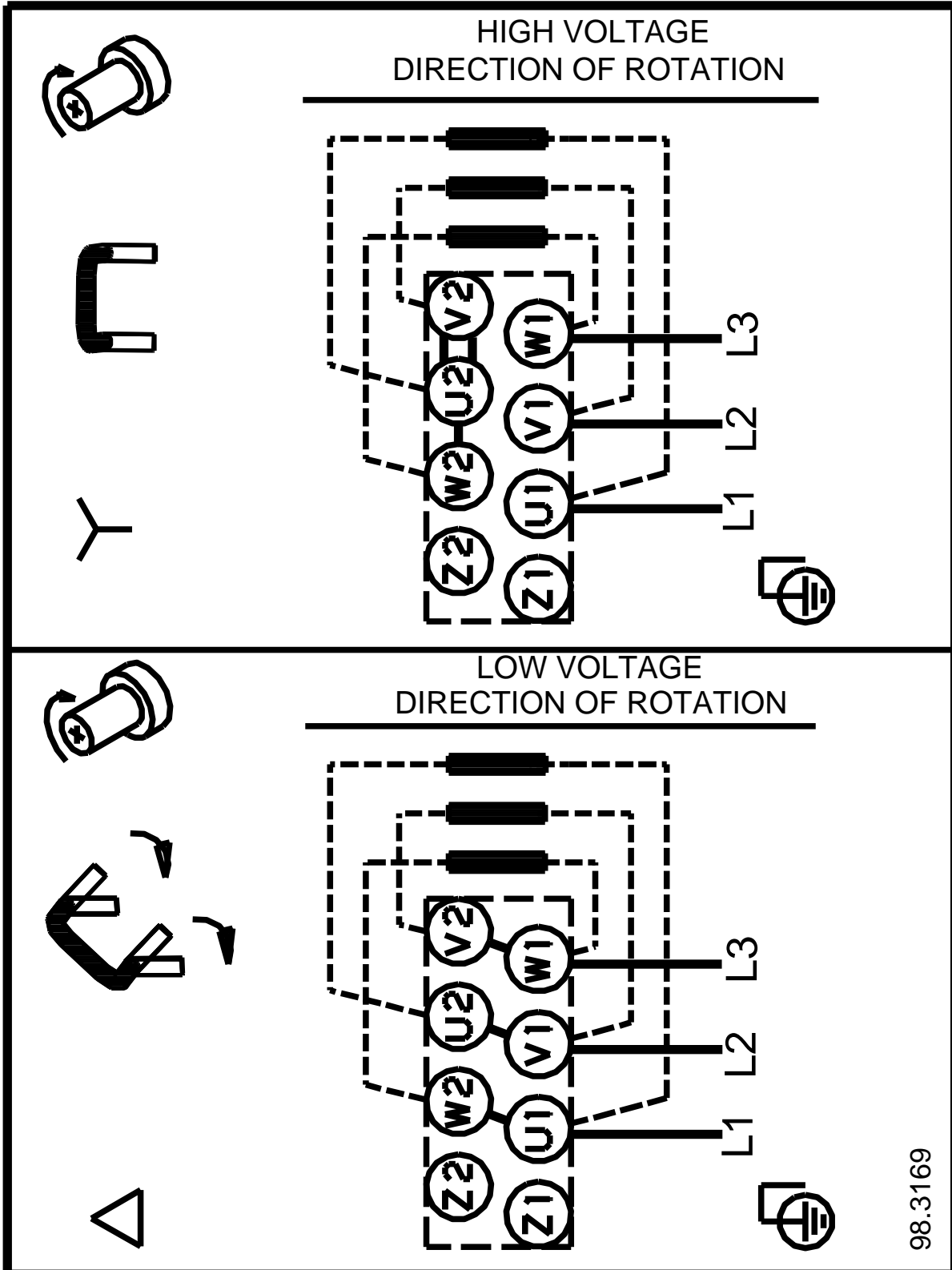


(IEC 85):	F
:	.
:	85805102
:	.
:	.
:	.
, MEI :	0.70
():	10.3
():	12.3
:	0.04 ³
Danish VVS No.:	381810090
Finnish LVI No.:	4616003
Norwegian NRF no.:	9043512
C :	HU
:	8413705100

98282133 TP 25-90/2 A-O-A-BQQE-DX1 50



98282133 TP 25-90/2 A-O-A-BQQE-DX1 50



98.3169