

1 TPE 32-320/2-S A-F-A-BQQE



: 98112560

12756. Pipework connection is via PN 16 DIN flanges (EN 1092-2 and ISO 7005-2).

EN

IE5

IEC 60034-30-2.

: -25 .. 120 °C
: 20 °C
998.2 / 3

: 2900 /

17.6 3/
24

: 155
: BQQE
- : ISO9906:2012 3B

c : EN-JL1040
A48-40 B

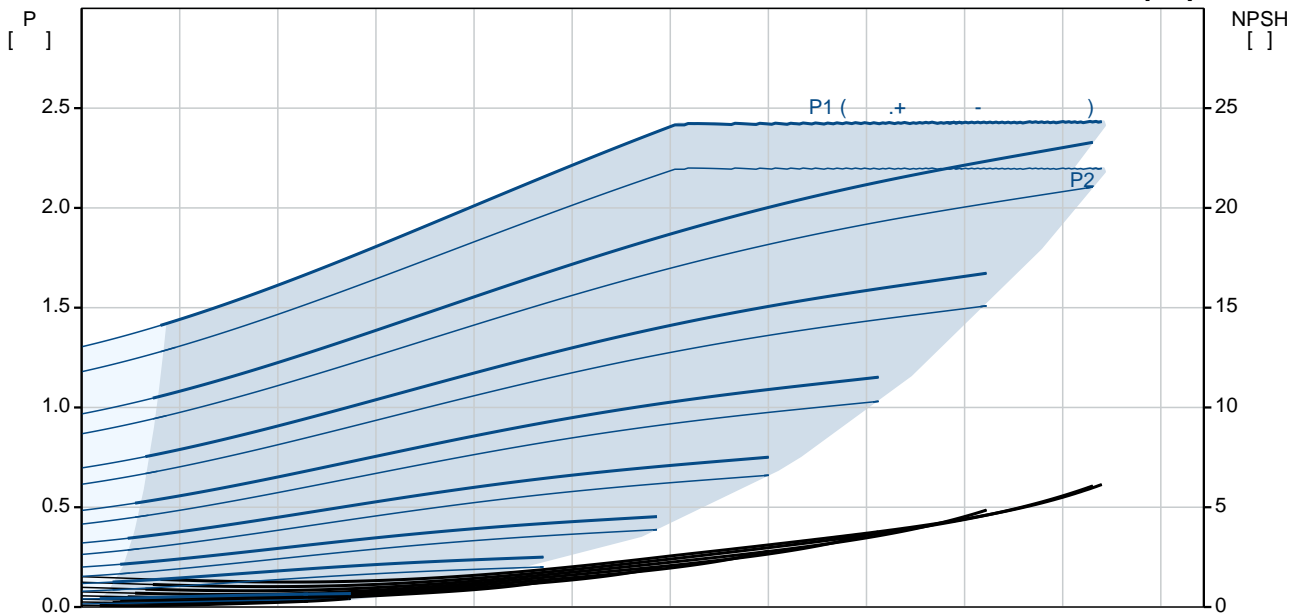
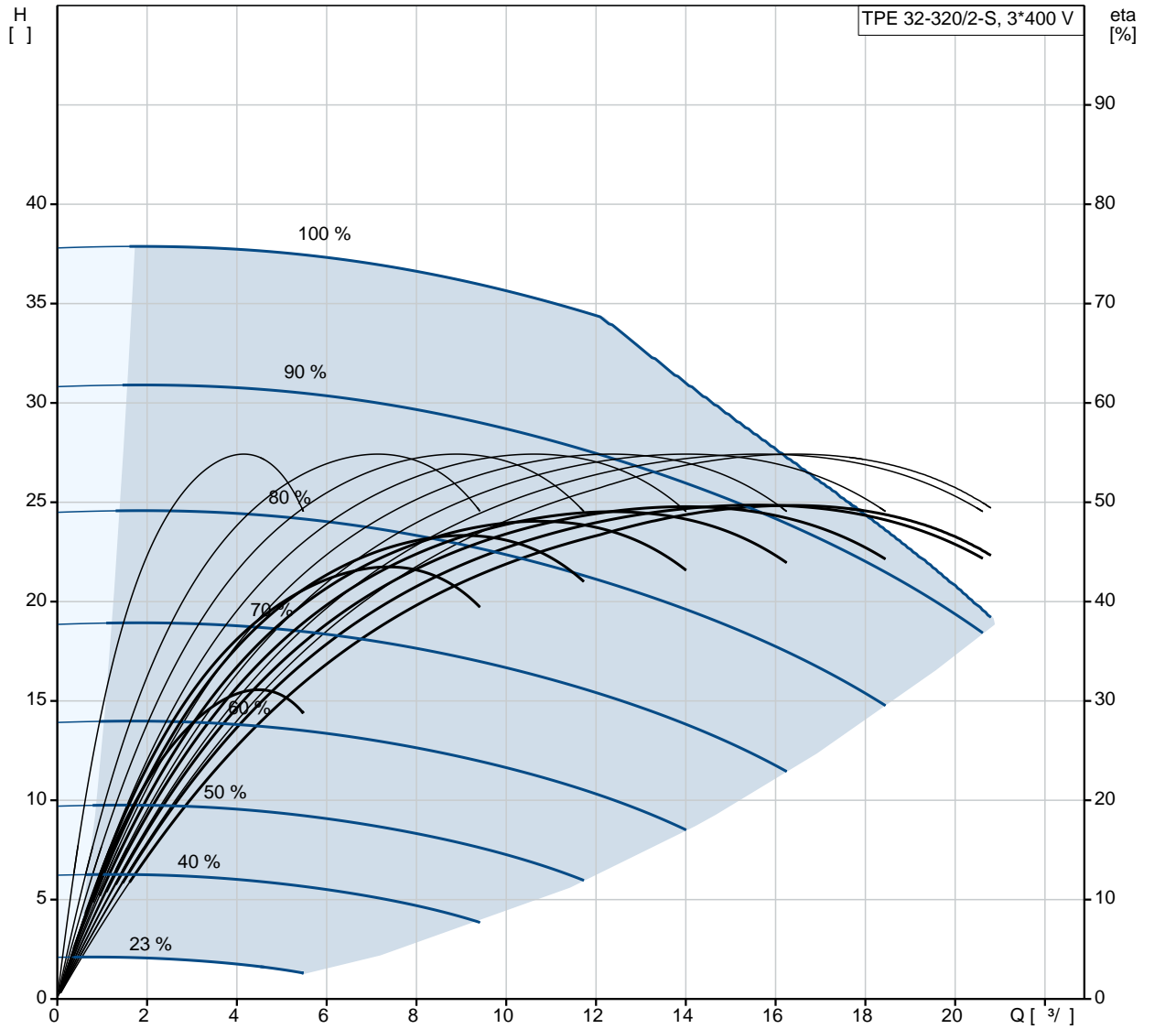
, EN/DIN: EN-JL1030
, AISI/ASTM: A48-30 B

: -20 .. 50 °C

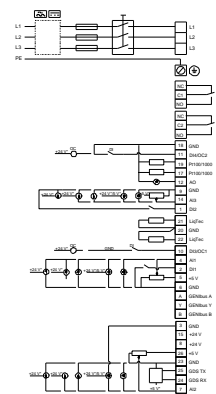
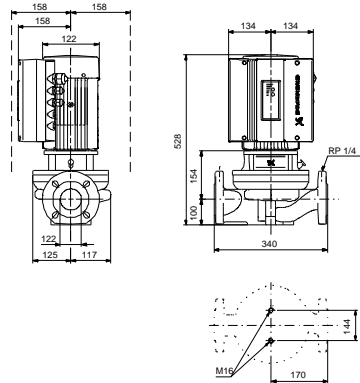
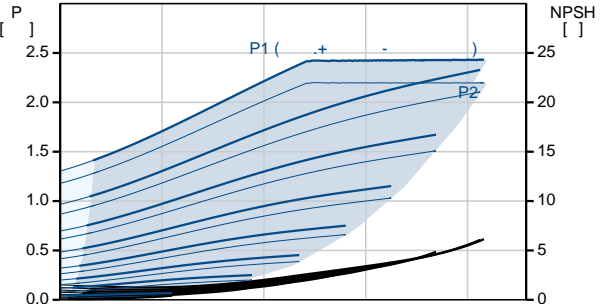
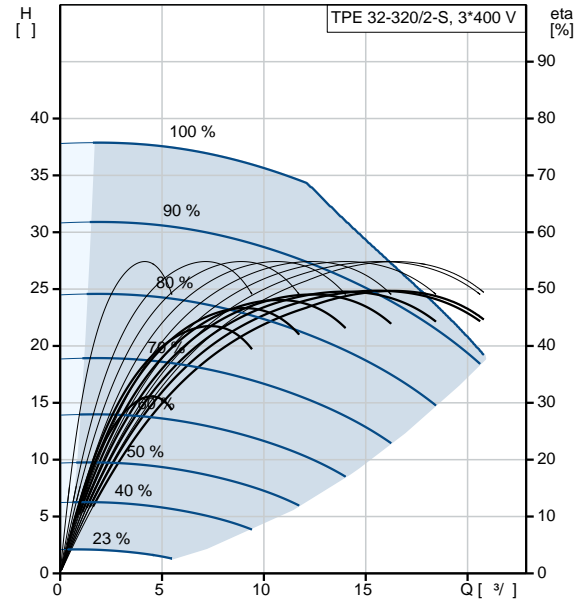
16
: DIN
: DN 32
: PN 16
: 340

: 90LD
- : IE5
- P2: 2.2
: 50 Hz
: 3 x 380-500
: 4.15-3.40 A
Cos - : 0.93-0.87
: 360-4000 /
: 90.1% : 90.1 %
(IEC 34-5): IP55
(IEC 85): F
: 98719485
: , MEI : 0.70
(): 47
(): 61
: 0.13³
Danish VVS No.: 381911320
Finnish LVI No.: 4616550

98112560 TPE 32-320/2-S A-F-A-BQQE 50



	TPE 32-320/2-S A-F-A-BQQE
	98112560
EAN	5710629214409
	2900 /
	17.6 ³ /
	24
	320
	155
	BQQE
	ISO9906:2012 3B
	A
c	EN-JL1040 A48-40 B
	EN-DIN: EN-JL1030
	AISI/ASTM: A48-30 B
	A
	-20 .. 50 °C
	16
	DIN
	DN 32
	PN 16
	340
	F
	-25 .. 120 °C
	20 °C
	998.2 / ³
	90LD
	IE5
- P2:	2.2
	50 Hz
	3 x 380-500
	4.15-3.40 A
Cos	0.93-0.87
	360-4000 /
	90.1%
	90.1 %
(IEC 34-5):	IP55
(IEC 85):	F
	98719485
	HMI300 -



FM300 - Advanced
()

:

, MEI : 0.70

(): 47

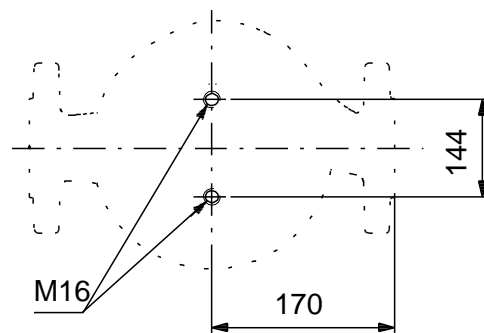
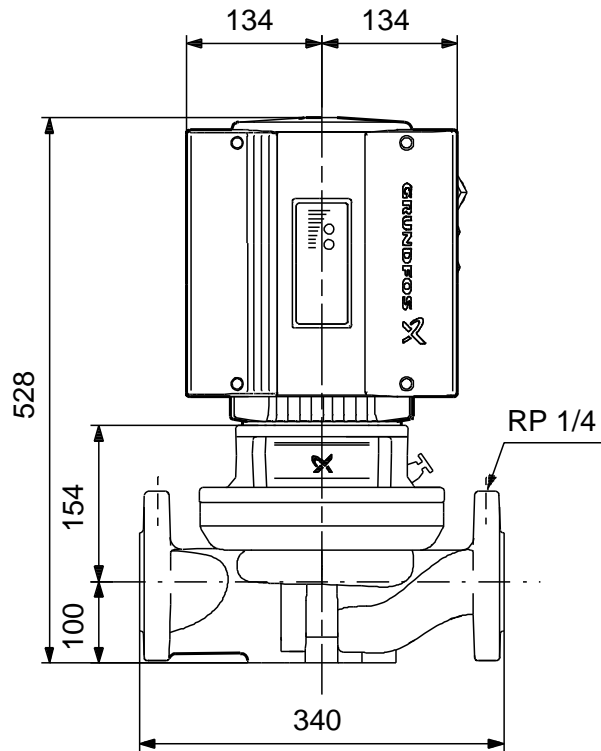
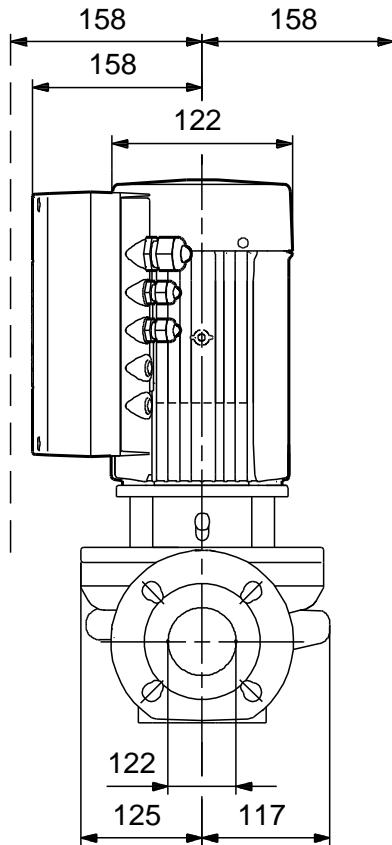
(): 61

: 0.13 ³

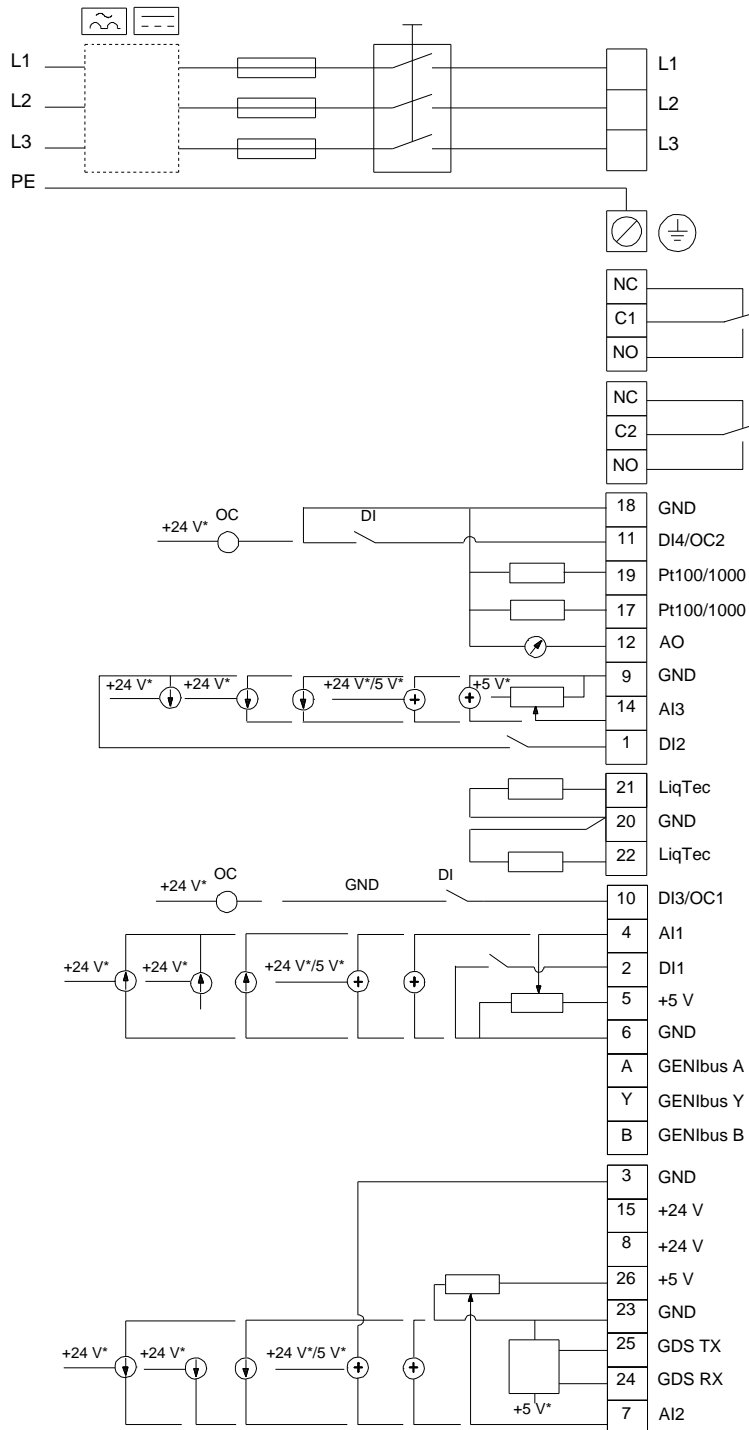
Danish VVS No.: 381911320

Finnish LVI No.: 4616550

98112560 TPE 32-320/2-S A-F-A-BQQE 50



98112560 TPE 32-320/2-S A-F-A-BQQE 50



!

[], .