

1 UPS 25-70 130



: 96621356

TF : 95  
 : EAC

EN-JL1030  
 ASTM 30 B  
 , PES/PP

10  
 G 1 1/2  
 PN 10  
 130

1: 95  
 2: 120

: 140  
 : 50 Hz  
 : 1 x 230  
 1: 0.45 A  
 2: 0.56 A

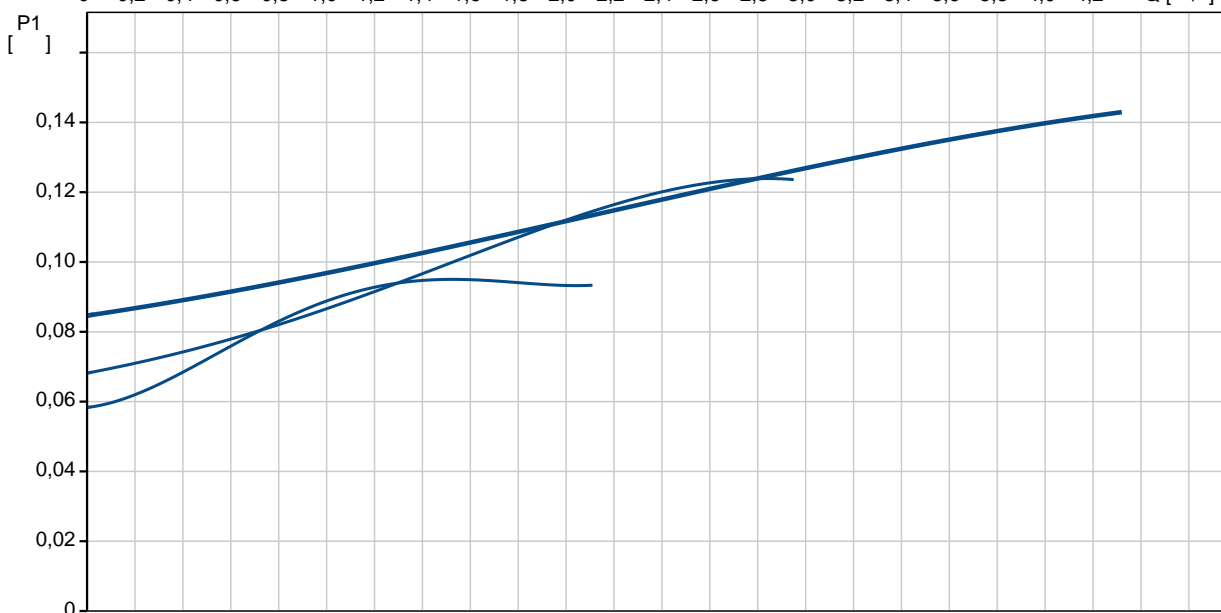
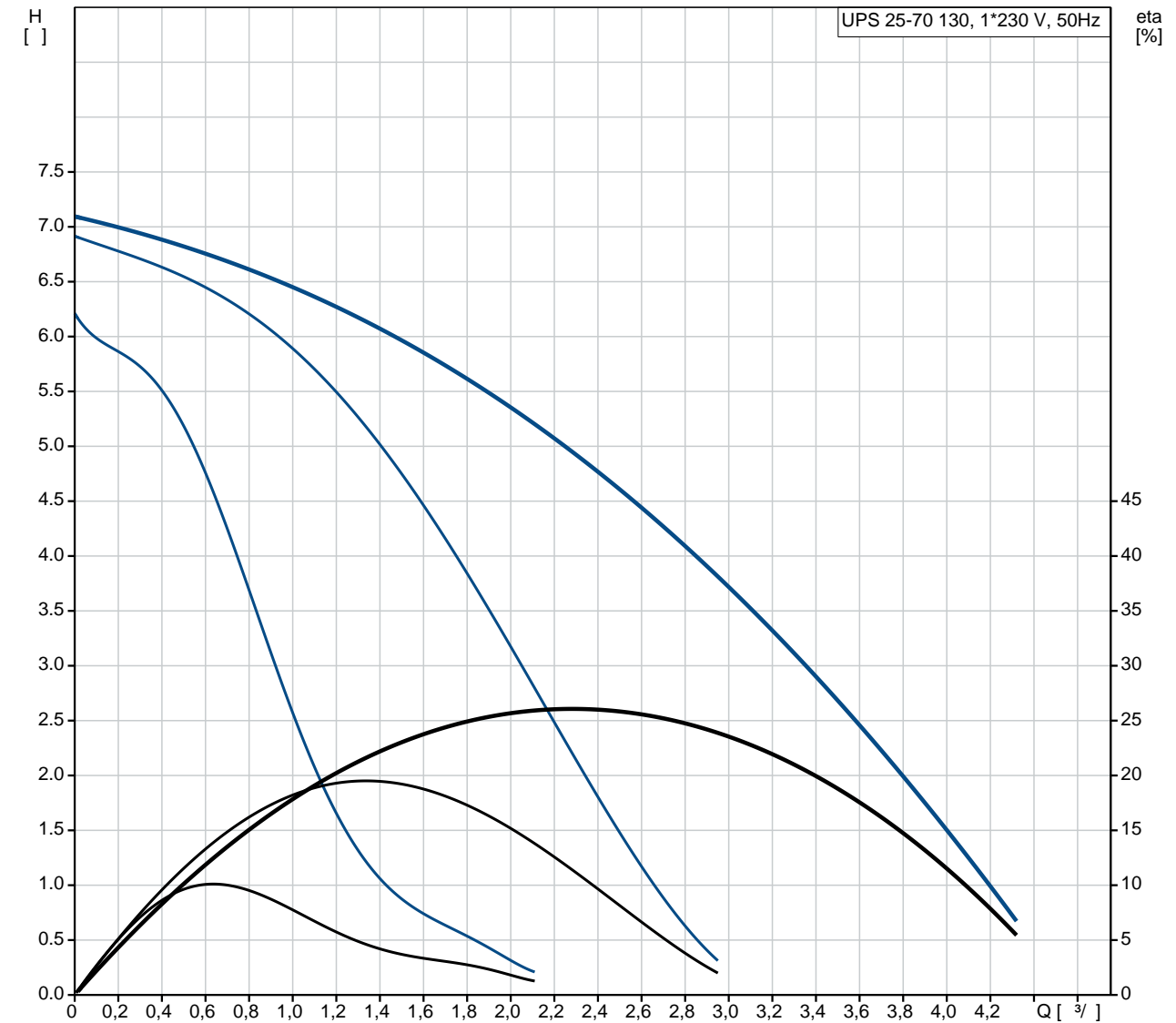
: 2 .. 95 °C  
 : 60 °C  
 983.2 / ³

, PES/PP.

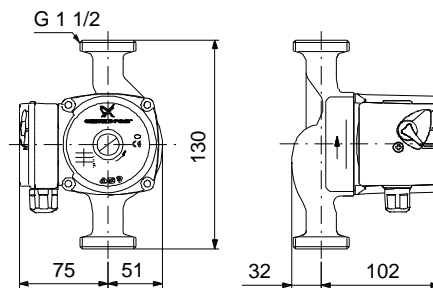
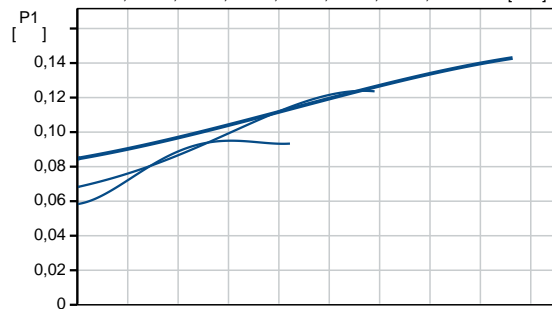
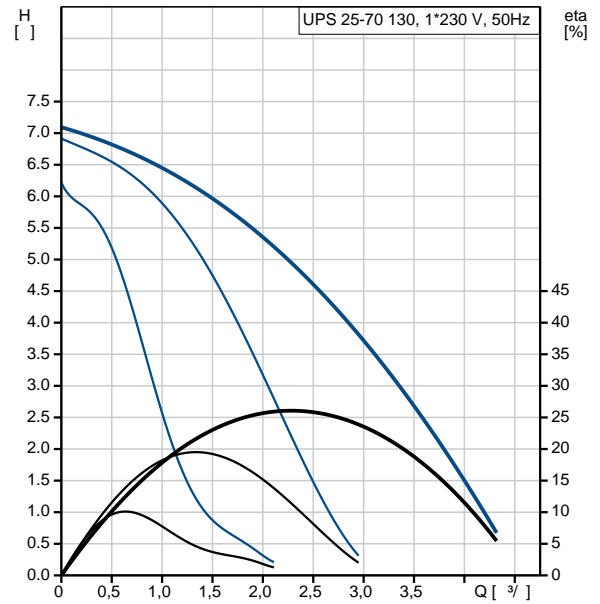
1-



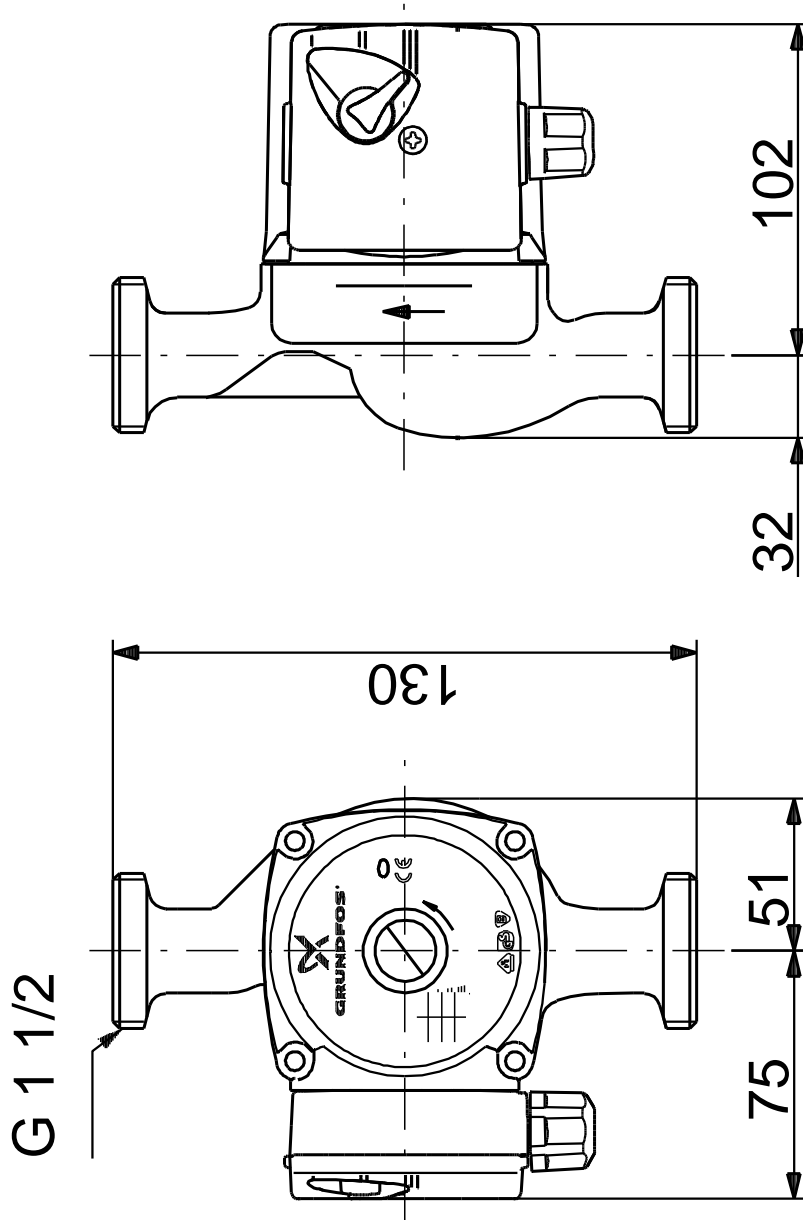
## 96621356 UPS 25-70 130 50



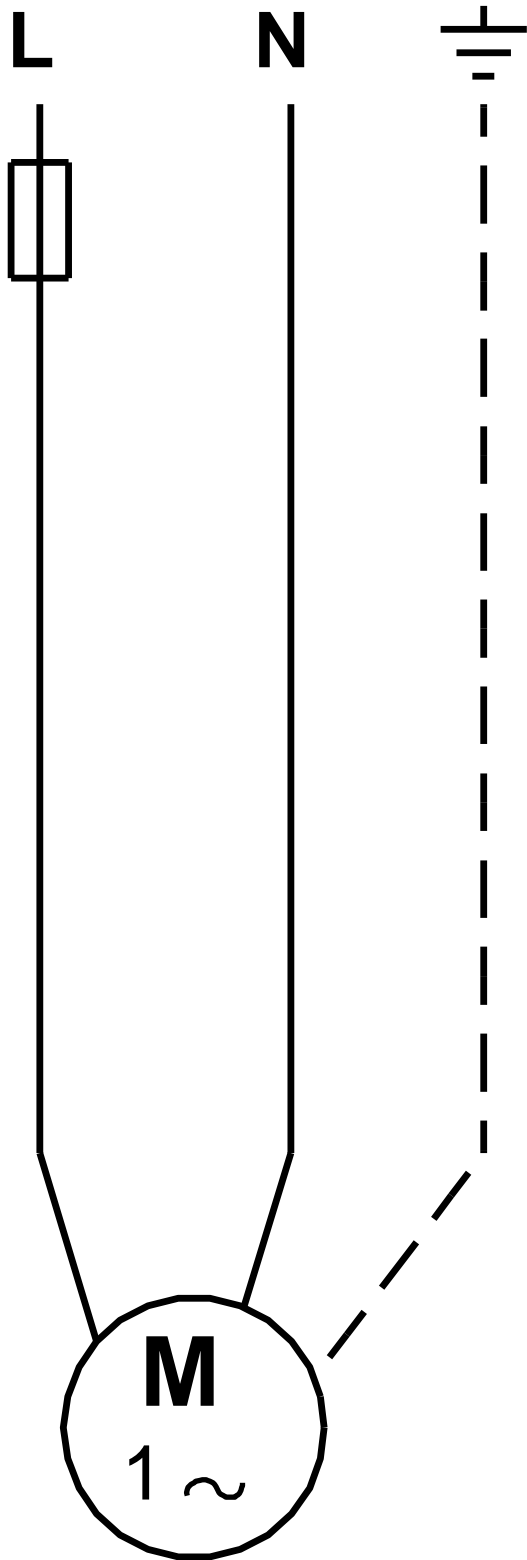
		UPS 25-70 130
		96621356
EAN		5700834972713
		3
		70
TF		95
		EAC
		EN-JL1030
		ASTM 30 B
		, PES/PP
		10
		G 1 1/2
		PN 10
		130
		2 .. 95 °C
		60 °C
		983.2 / <sup>3</sup>
1:		95
2:		120
		140
		50 Hz
		1 x 230
	1:	0.45 A
	2:	0.56 A
	3:	0.62 A
		2.5
	(IEC 34-5):	IP44
	(IEC 85):	F
		2.4
		2.6
		0.004 <sup>3</sup>



## 96621356 UPS 25-70 130 50



96621356 UPS 25-70 130 50



! [ ], .