

1 UPS 50-185 F



: 96430300

« »

* 3

- *
- *
- *
- *
- *

- 1-

Relay:

: -10 .. 120 °C
 : 60 °C
 983.2 / 3

: AAA,EAC

EN-JL1040
 ASTM 35 B - 40 B

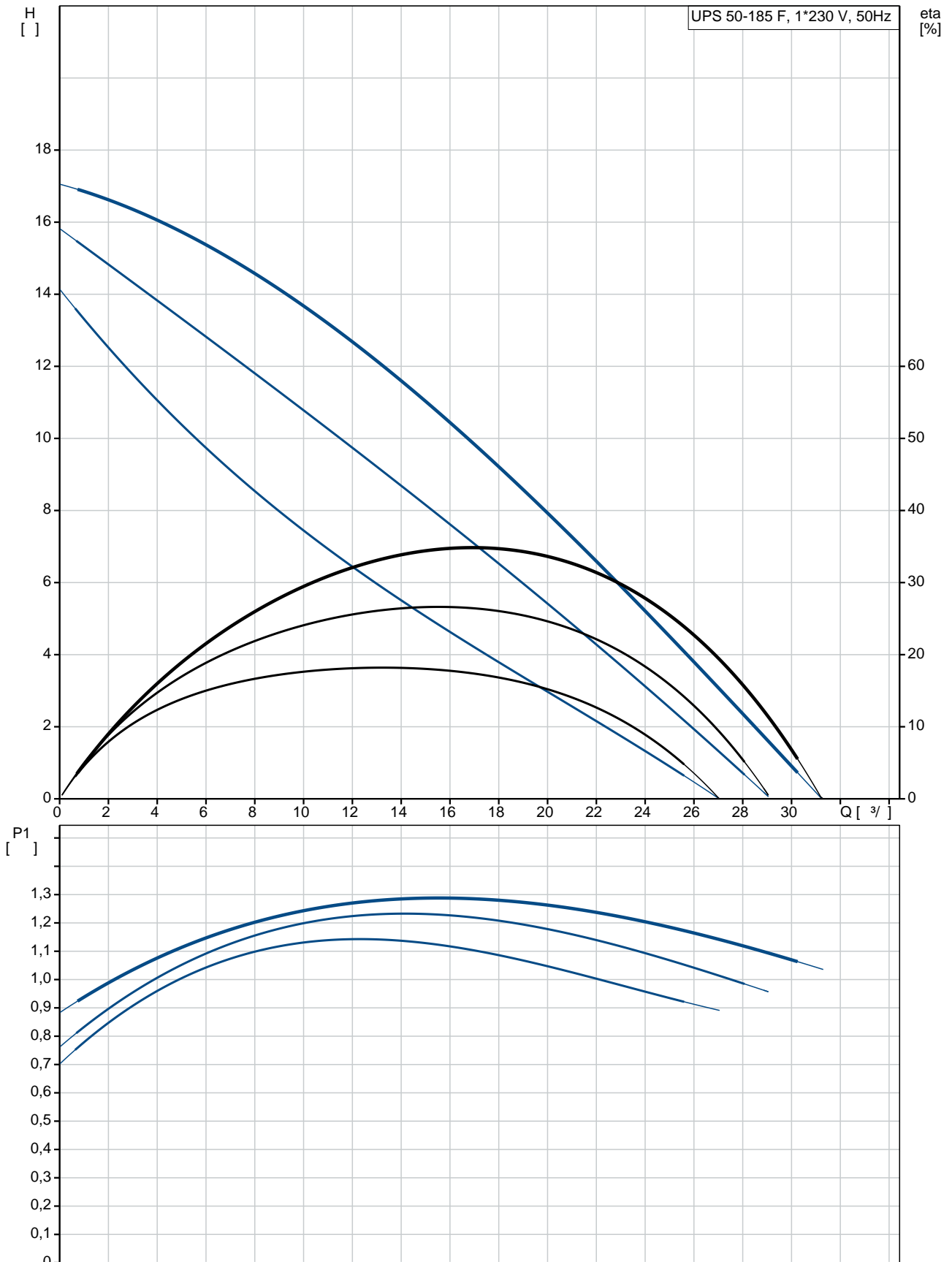
DIN W.-Nr. 1.4301
 AISI 304

: 0 .. 40 °C

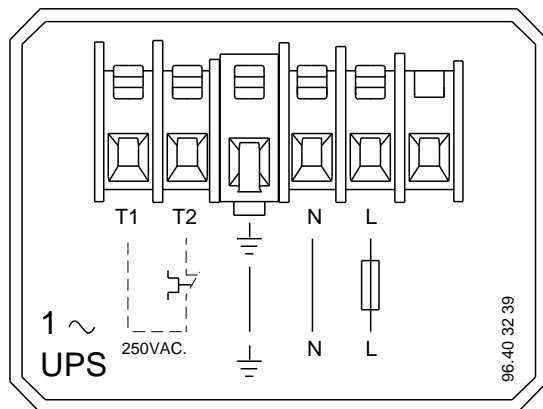
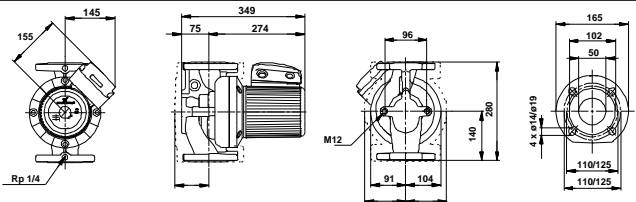
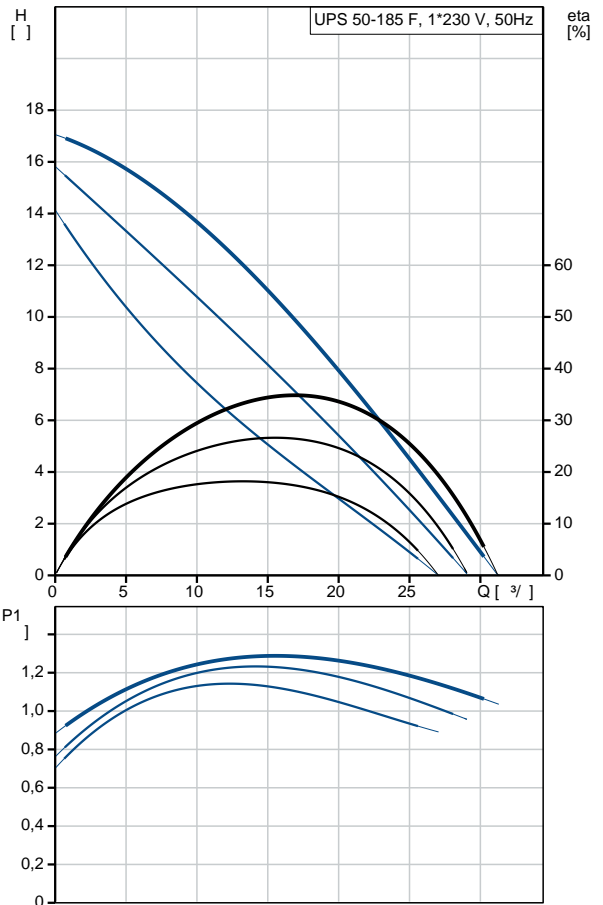
: 10
 : DIN
 : DN 50

: PN 6 / PN 10
 : 280
 :
 : 1: 1150
 : 2: 1240
 : 1290
 : 50 Hz
 : 1 x 230-240
 1: 5.6 A
 2: 6.05 A
 3: 6 A
 Cos 1: 0.89
 Cos 2: 0.89
 Cos : 0.93
 : 30 /400
 (IEC 85): H
 (IEC 60529): X4D
 :
 : 28
 : 29.1
 : 0.043 ³
 C : RS
 : 8413703000

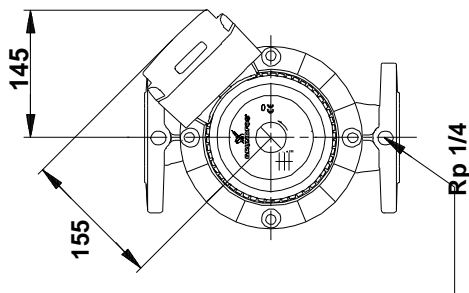
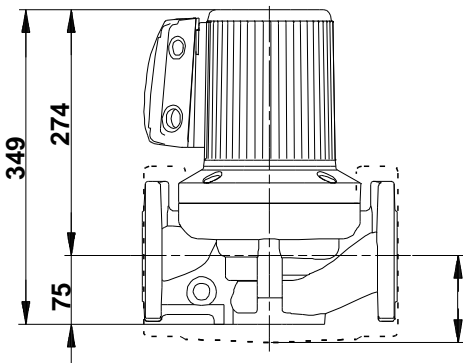
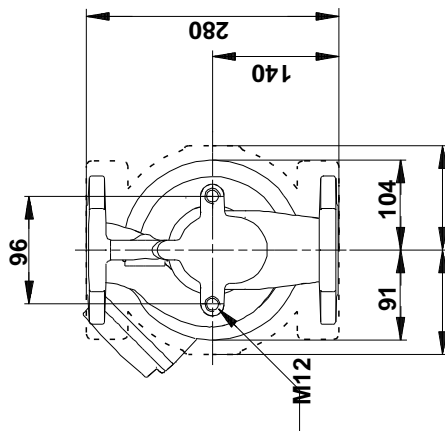
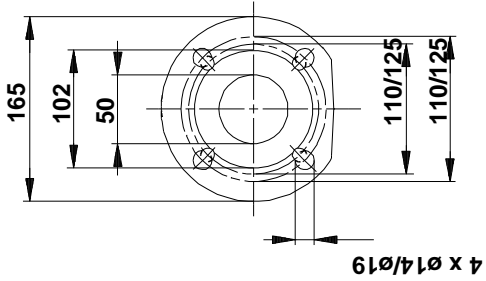
96430300 UPS 50-185 F 50



		UPS 50-185 F
		96430300
EAN		5700392948137
		3
		185
		AAA,EAC
		EN-JL1040
		ASTM 35 B - 40 B
		DIN W.-Nr. 1.4301
		AISI 304
		0 .. 40 °C
		10
		DIN
		DN 50
		PN 6 / PN 10
		280
		-10 .. 120 °C
		60 °C
		983.2 / 3
		1: 1150
		2: 1240
		1290
		50 Hz
		1 x 230-240
	1:	5.6 A
	2:	6.05 A
	3:	6 A
Cos	1:	0.89
Cos	2:	0.89
Cos		0.93
		30 /400
	(IEC 85):	H
	(IEC 60529):	X4D
		CONTACT
		1.30H
		28
		29.1
		0.043 3
C		RS
		8413703000



96430300 UPS 50-185 F 50



96430300 UPS 50-185 F 50

