

1 UPSD 50-120 F



: 96408910

- * *
- * *
- * *
- * *
- * *
- * *

Relay:

: -10 .. 120 °C
 : 60 °C
 983.2 / 3

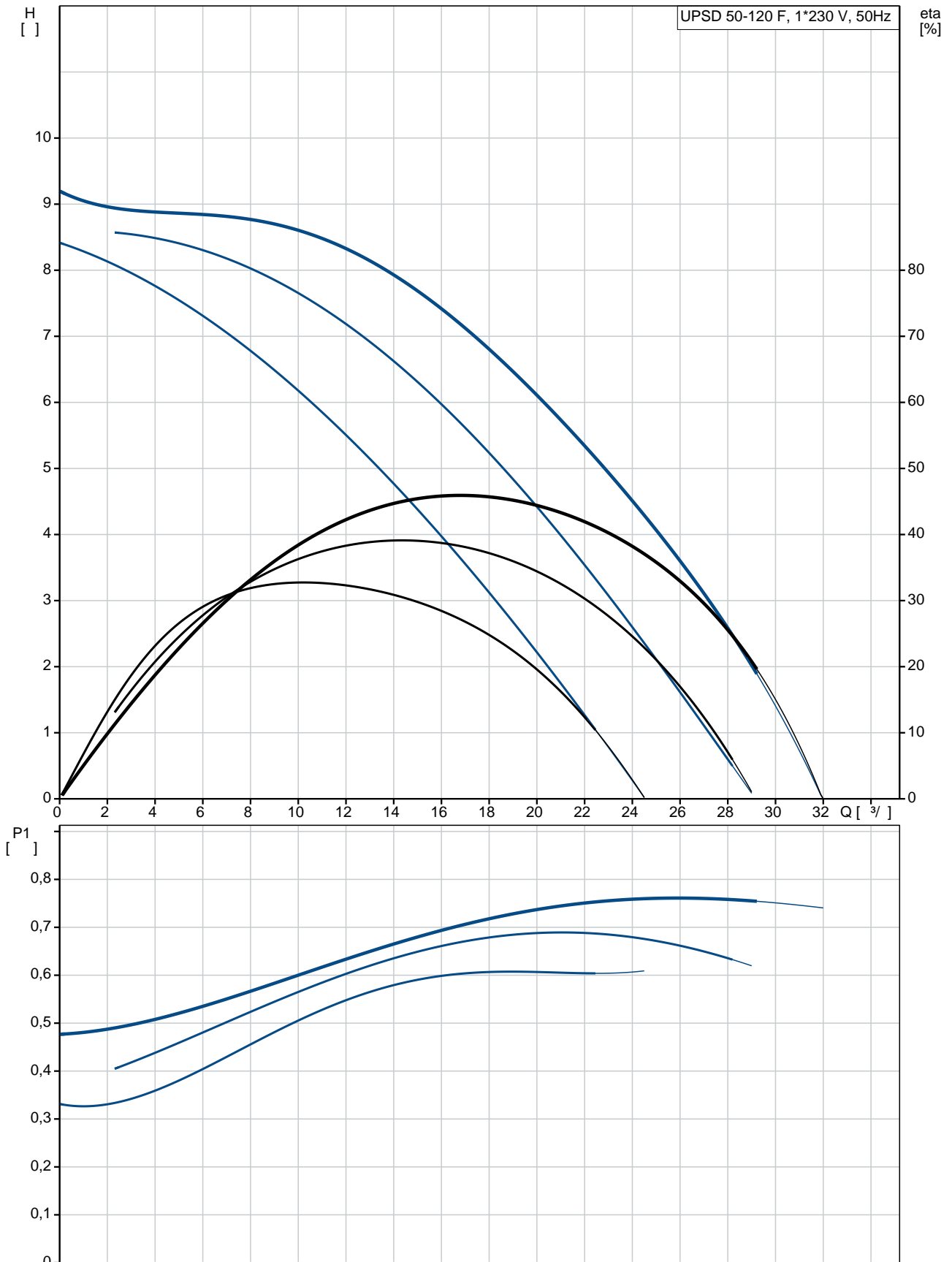
: AAA,EAC

EN-JL1040
 ASTM 35 B - 40 B

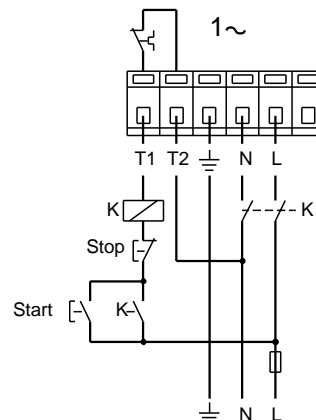
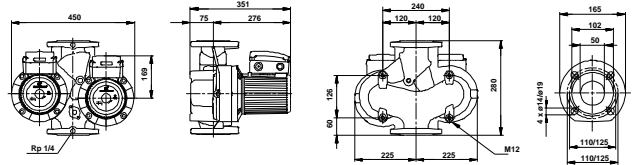
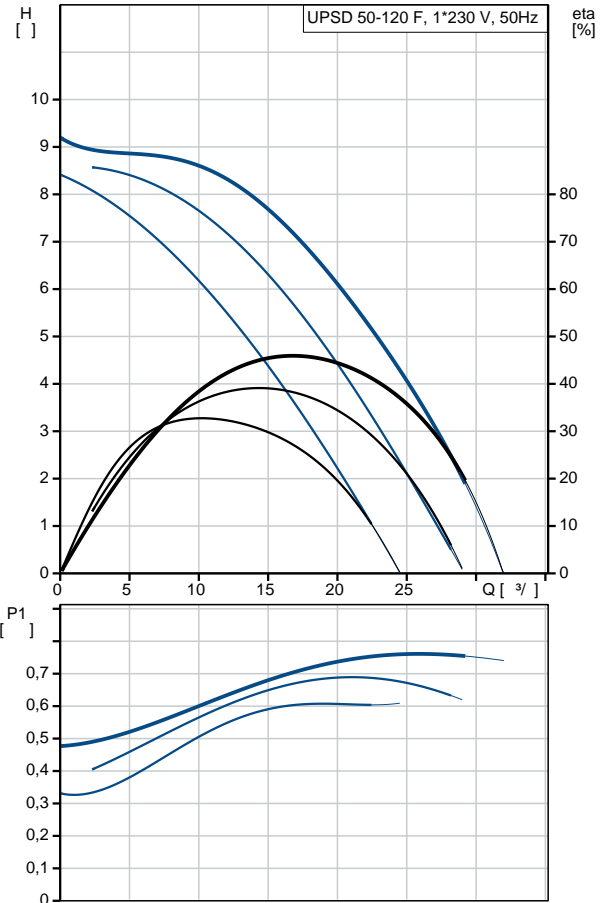
DIN W.-Nr. 1.4301
 AISI 304

: 0 .. 40 °C

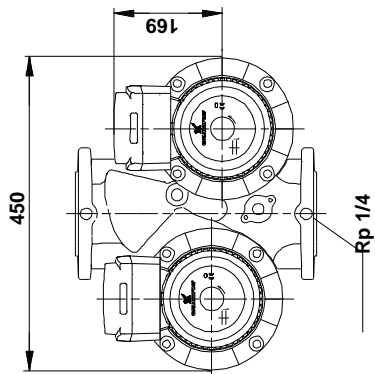
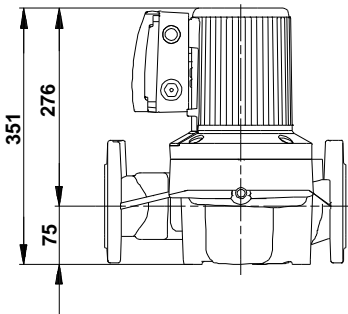
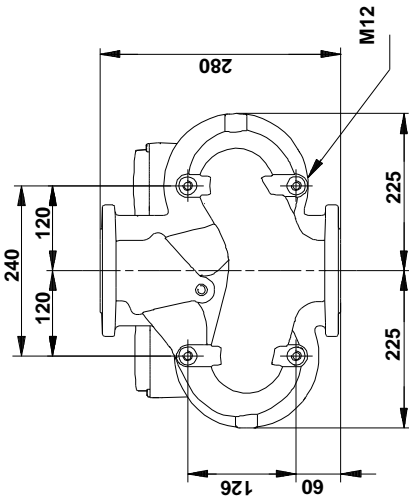
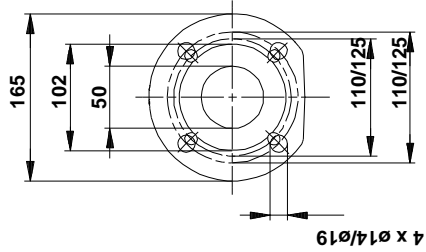
96408910 UPSD 50-120 F 50



		UPSD 50-120 F
		96408910
EAN		5700390424466
		3
		120
		AAA,EAC
		EN-JL1040
		ASTM 35 B - 40 B
		DIN W.-Nr. 1.4301
		AISI 304
		0 .. 40 °C
		10
		DIN
		DN 50
		PN 6 / PN 10
		280
		-10 .. 120 °C
		60 °C
		983.2 / ³
		1: 620
		2: 700
		760
		50 Hz
		1 x 230-240
	1:	3.05 A
	2:	3.35 A
	3:	3.6 A
Cos	1:	0.88
Cos	2:	0.91
Cos		0.92
		25 /400
	(IEC 85):	H
	(IEC 60529):	X4D
		CONTACT
		12H
		57
		62.9
		0.125 ³
C		RS
		8413703000



96408910 UPSD 50-120 F 50



96408910 UPSD 50-120 F 50

