

1 UPSD 65-60/2 F



: 96404983

*
*
*
*
*
*
*

3-

*
*
*

Relay:

: -10 .. 120 °C
: 60 °C
983.2 / 3

: EAC

EN-JL1040

ASTM 35 B - 40 B

DIN W.-Nr. 1.4301
AISI 304

: 0 .. 40 °C

10
DIN
DN 65
PN 6 / PN 10
340

1: 330
2: 370

: 490
50 Hz
3 x 400-415
1: 0.56 A
2: 0.64 A
3: 1.05 A

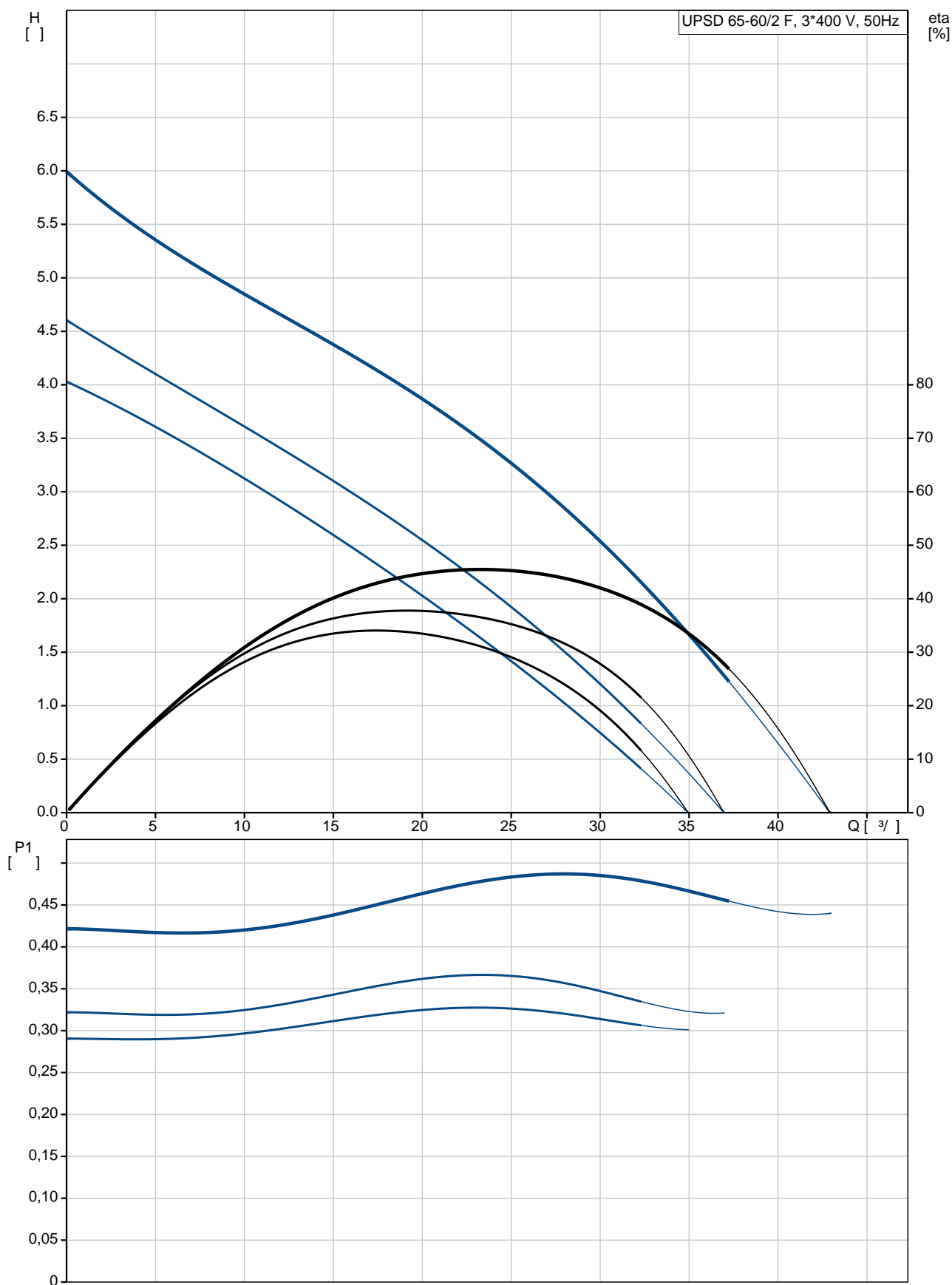
Cos 1: 0.85
Cos 2: 0.83
Cos : 0.67

: 2
(IEC 85): F
(IEC 60529): X4D

50
55.9
0.125 ³

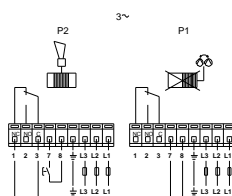
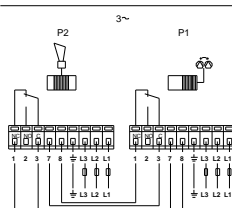
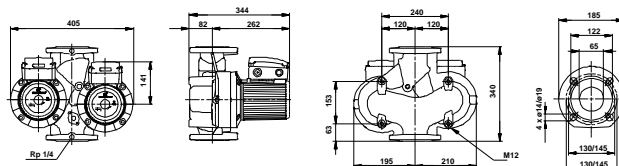
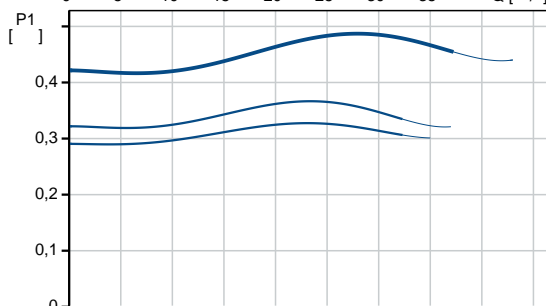
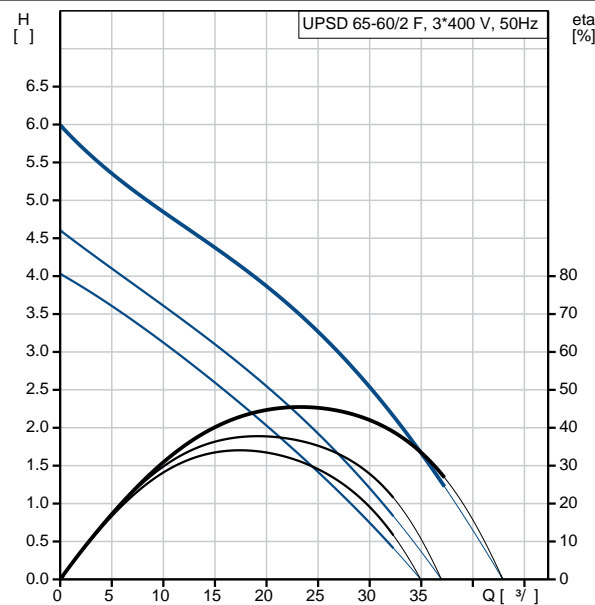
Norwegian NRF no.: 9042528
C : RS
8413703000

96404983 UPSD 65-60/2 F 50

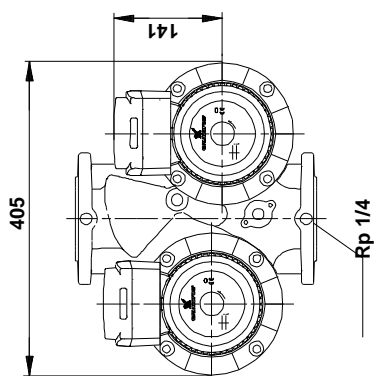
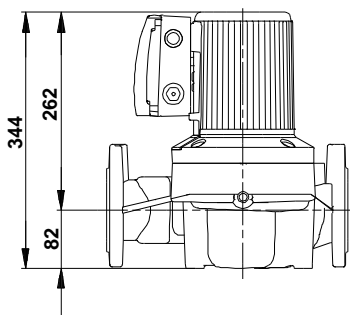
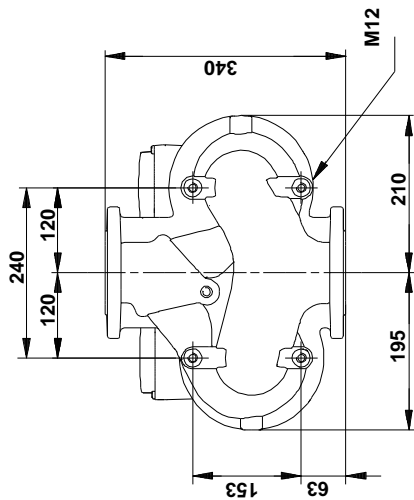
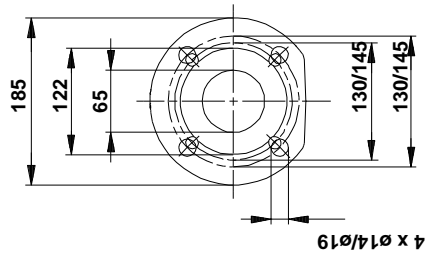


23.11.2020

		UPSD 65-60/2 F
		96404983
EAN		5700390739348
		3
		60
		EAC
		EN-JL1040
		ASTM 35 B - 40 B
		DIN W.-Nr. 1.4301
		AISI 304
		0 .. 40 °C
		10
		DIN
		DN 65
		PN 6 / PN 10
		340
		-10 .. 120 °C
		60 °C
		983.2 / 3
		1: 330
		2: 370
		490
		50 Hz
		3 x 400-415
	1:	0.56 A
	2:	0.64 A
	3:	1.05 A
Cos	1:	0.85
Cos	2:	0.83
Cos		0.67
		2
	(IEC 85):	F
	(IEC 60529):	X4D
		CONTACT
		12H
		50
		55.9
		0.125 3
Norwegian NRF no.:		9042528
C		RS
		8413703000



96404983 UPSD 65-60/2 F 50



96404983 UPSD 65-60/2 F 50

