

1 TPD 50-190/2 A-F-A-BQQE-HX1



: 96384280

7005-2).

EN 12756. Pipework connection is via PN 16 DIN flanges (EN 1092-2 and ISO

Frequency converter:

: -25 .. 120 °C
 : 20 °C
 : 998.2 / ³

: 2900 /

: 18.7 ³/_h
 : 15.1
 : 120
 : BQQE
 - : ISO9906:2012 3B2

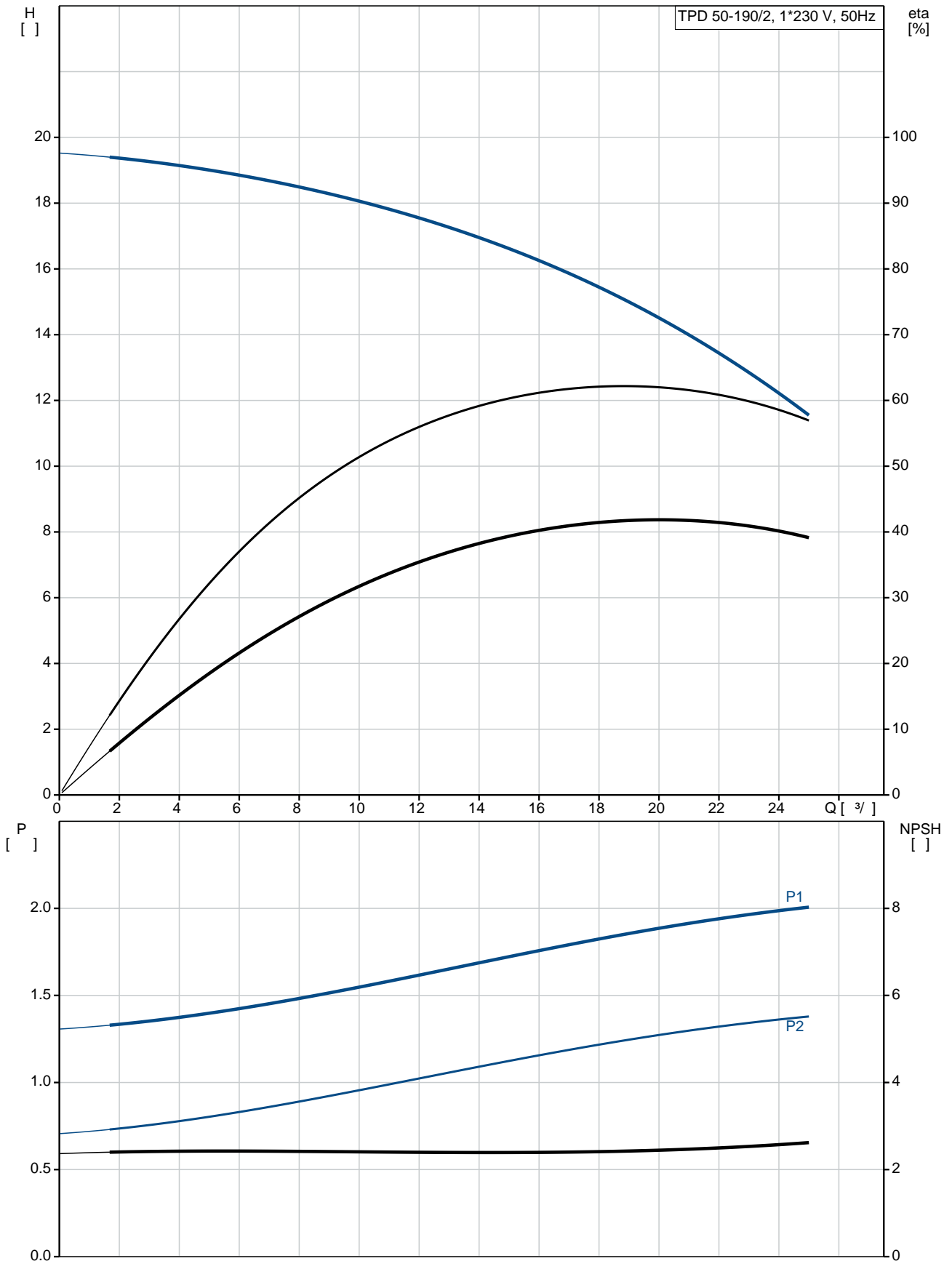
c : EN-GJL-250
 : ASTM class 35
 : EN/DIN: EN-GJL-200
 : AISI/ASTM: ASTM class 30

: -30 .. 40 °C

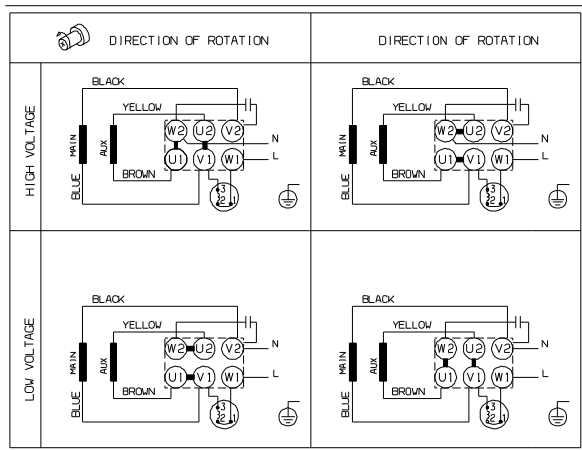
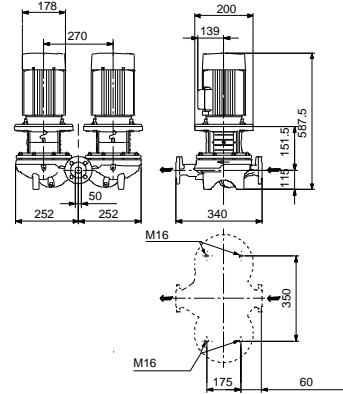
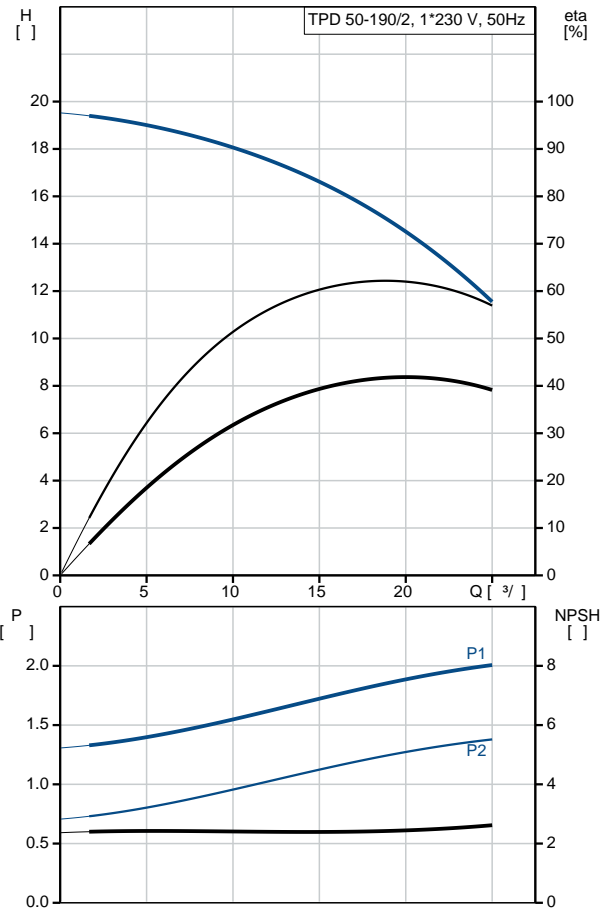
: 16
 - : 16 / 120 °C
 : DIN
 : DN 50

: PN 16
 : 340
 : FF165
 :
 : 90LB
 - P2: 1.5
 : 50 Hz
 : 1 x 220-230/240
 : 9.90/8.90 A
 : 390 %
 Cos - : 0.98/0.99
 : 2750/2740 / : 72-70 %
 : 2
 (IEC 34-5): 55 Dust/Jetting
 (IEC 85): F
 : 87204305
 :
 , MEI : 0.70
 (): 105
 (): 120
 : 0.38 ³

96384280 TPD 50-190/2 A-F-A-BQQE-HX1 50

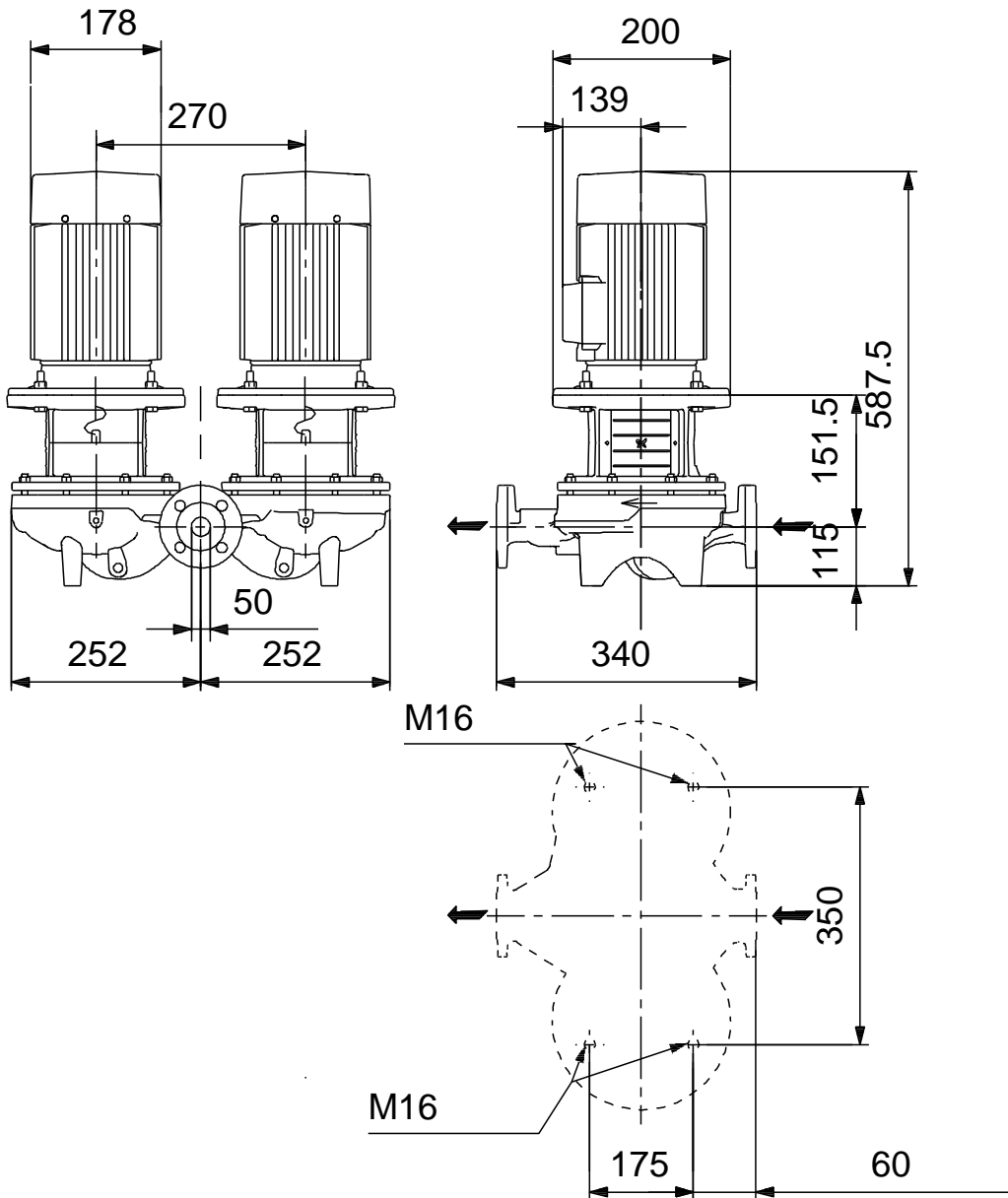


Model	TPD 50-190/2
Series	A-F-A-BQQE-HX1
EAN	96384280
	5700832152933
Flow rate	2900 /
Head	18.7 ³ /
Power	15.1
Speed	190
Efficiency	120
Material	BQQE
Standard	ISO9906:2012 3B2
Class	A
Material	EN-GJL-250
Material	ASTM class 35
Material	EN-GJL-200
Material	ASTM class 30
Material	A
Temperature	-30 .. 40 °C
Temperature	16
Temperature	16 / 120 °C
Standard	DIN
Standard	DN 50
Standard	PN 16
Standard	340
Standard	FF165
Standard	F
Temperature	-25 .. 120 °C
Temperature	20 °C
Volume	998.2 / ³
Weight	90LB
Efficiency	- P2: 1.5
Frequency	50 Hz
Current	1 x 220-230/240
Current	9.90/8.90 A
Power factor	390 %
Cos φ	0.98/0.99
Current	2750/2740 /
Efficiency	72-70 %
Efficiency	2
IEC 34-5	55 Dust/Jetting
IEC 85	F
Material	PTO
Material	87204305

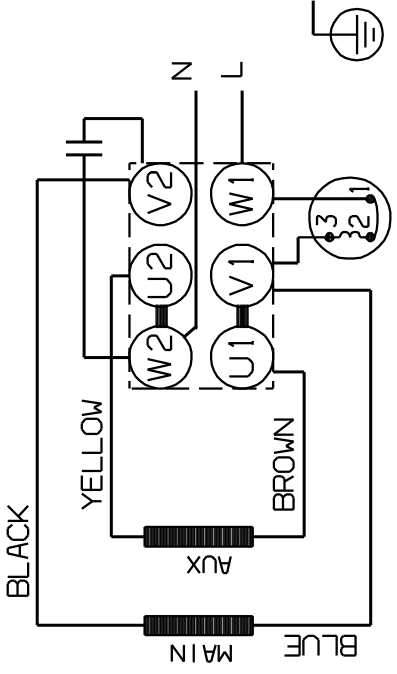

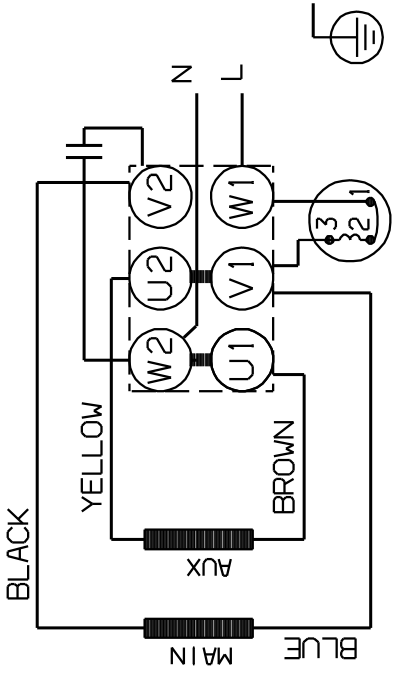
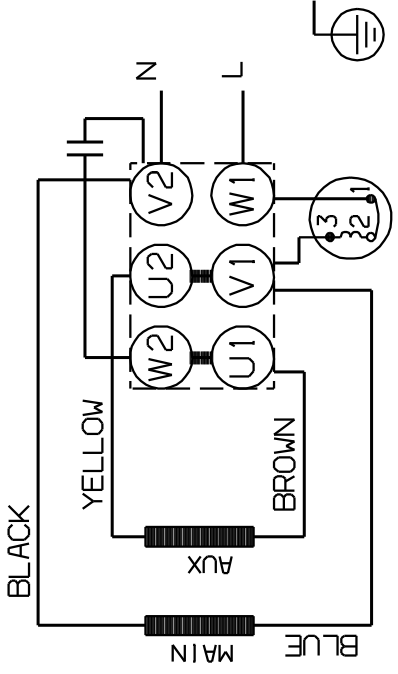


:	.
:	
, MEI :	0.70
()::	105
()::	120
:	0.38 ³

96384280 TPD 50-190/2 A-F-A-BQQE-HX1 50



96384280 TPD 50-190/2 A-F-A-BQQE-HX1 50

DIRECTION OF ROTATION	
 DIRECTION OF ROTATION	
	HIGH VOLTAGE
	
	LOW VOLTAGE