

1 UNILIFT CC9 - M1



: [96280969](#)

Unilift CC

Grundfos

3

o  
o  
o  
o  
o

?10

: 10

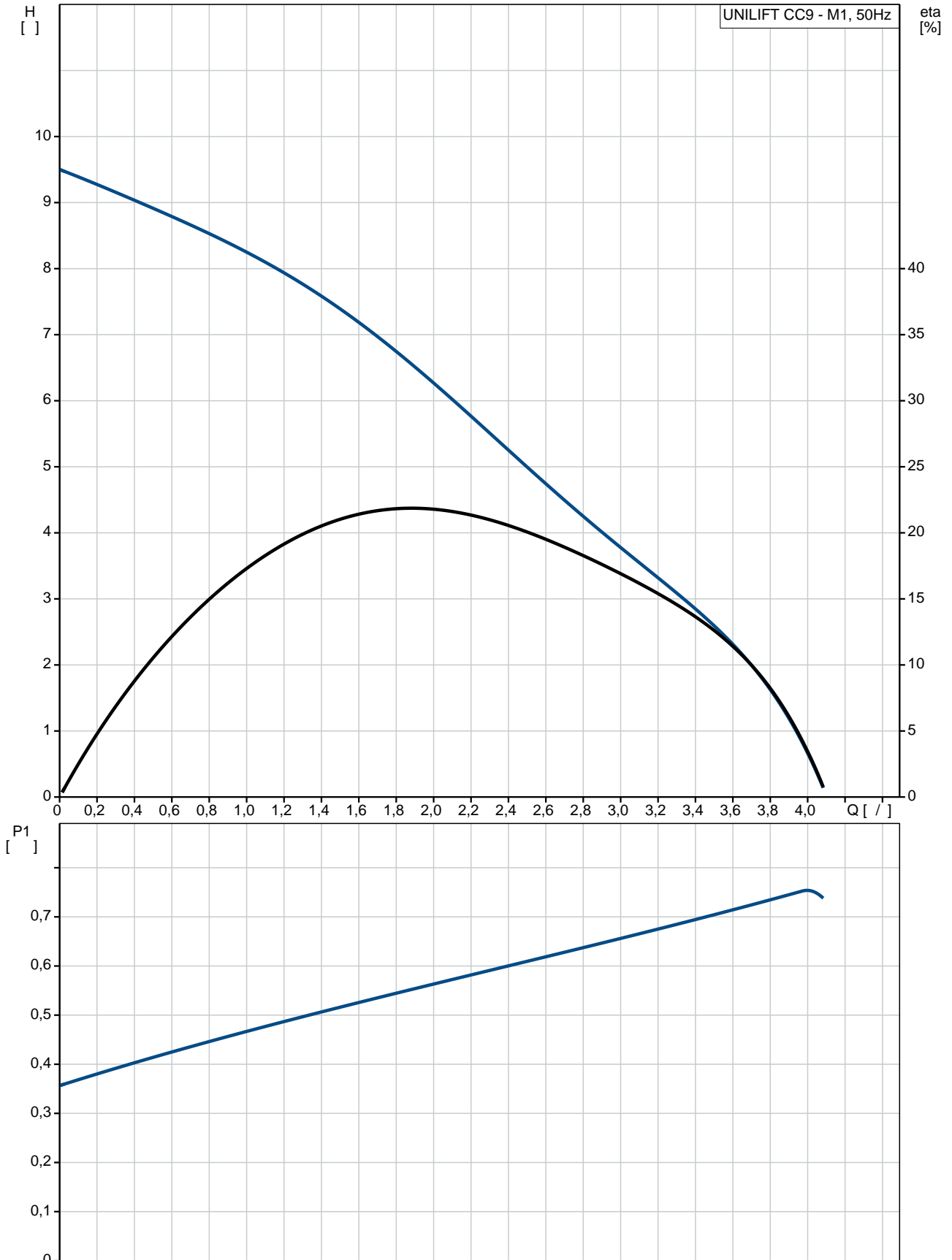
Shaft:

Motor:

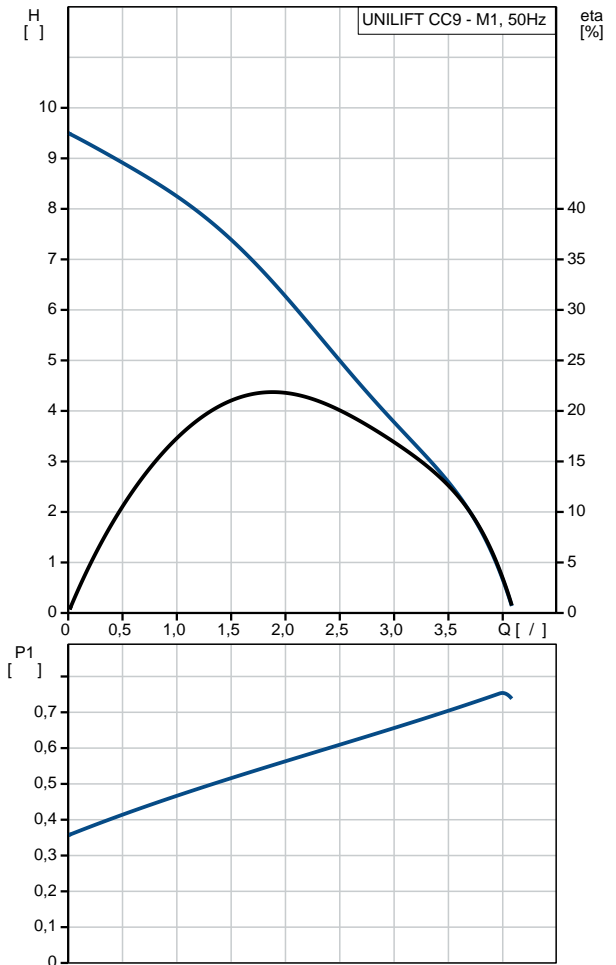
PP 15 GF  
 PPOm 20 GF  
 Stainless steel  
 EN 1.4301  
 AISI 304  
 Stainless steel  
 EN 1.4301

AISI 304  
R 1 1/4  
: 10  
: 0 .. 40 °C  
998.2 / ³  
: 50 Hz  
: 1 x 220-240  
: 3.5 A  
: 8 /450  
(IEC 34-5): IP68  
(IEC 85): B  
: 10  
: SCHUKO  
: 6.6  
: 7.36  
: 0.017 ³  
Danish VVS No.: 391280191  
Swedish RSK No.: 5885923  
Finnish LVI No.: 4822564  
Norwegian NRF no.: 9045641  
C : HU  
: 8413702100

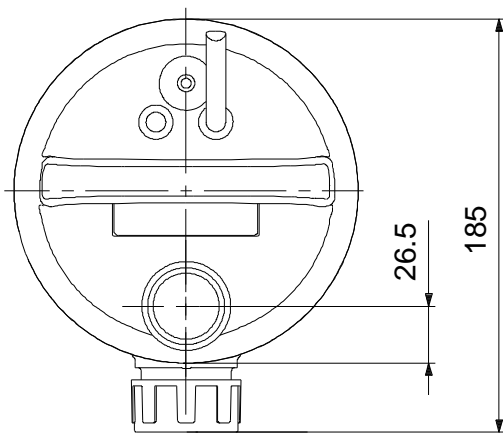
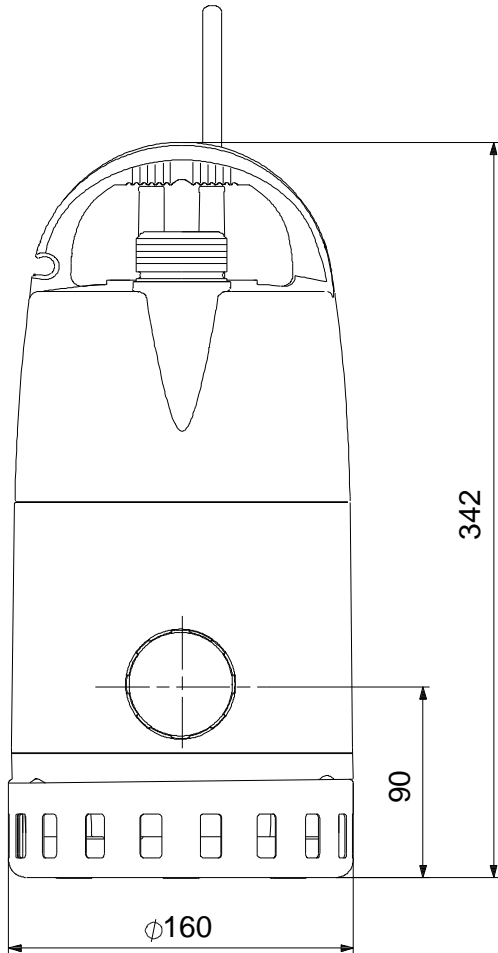
## 96280969 UNILIFT CC9 - M1 50



UNILIFT CC9 - M1	
96280969	
EAN	5700830761397
UER 189	
Maximum flow:	3.89 /
Ma	3.89 /
9	
10	
PP 15 GF	
PPOm 20 GF	
Stainless steel	
Shaft:	EN 1.4301
AISI 304	
Motor:	Stainless steel
Motor:	EN 1.4301
Motor:	AISI 304
R 1 1/4	
10	
0 .. 40 °C	
998.2 / <sup>3</sup>	
50 Hz	
1 x 220-240	
3.5 A	
8 /450	
(IEC 34-5):	IP68
(IEC 85):	B
10	
SCHUKO	
6.6	
7.36	
0.017 <sup>3</sup>	
Danish VVS No.:	391280191
Swedish RSK No.:	5885923
Finnish LVI No.:	4822564
Norwegian NRF no.:	9045641
C	HU
8413702100	



## 96280969 UNILIFT CC9 - M1 50



**96280969 UNILIFT CC9 - M1 50**



! [ ], .