

1 CR 45-1 A-F-A-E-HQQE



: 96122747

(" - "),

DIN.

3-

: -30 .. 120 °C
: 20 °C
: 998.2 / ³

: 2917 /

: 45 ³/₄
: 19.1

: HQQE
: CE, EAC, ACS
- : ISO9906:2012 3B

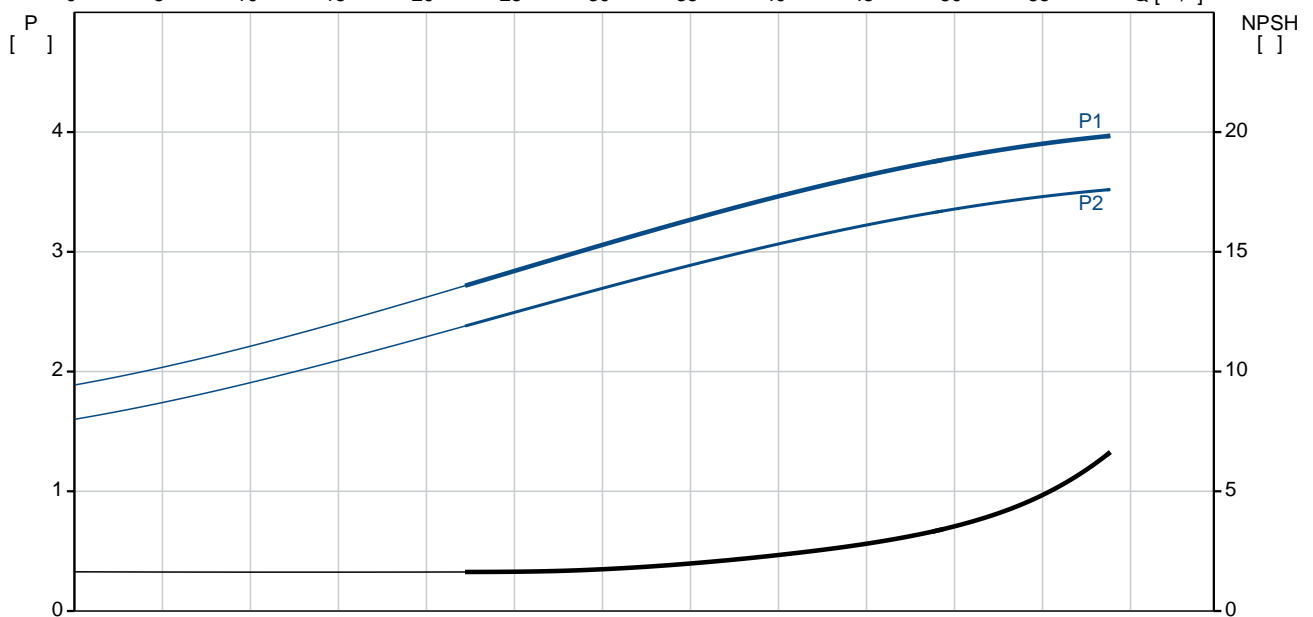
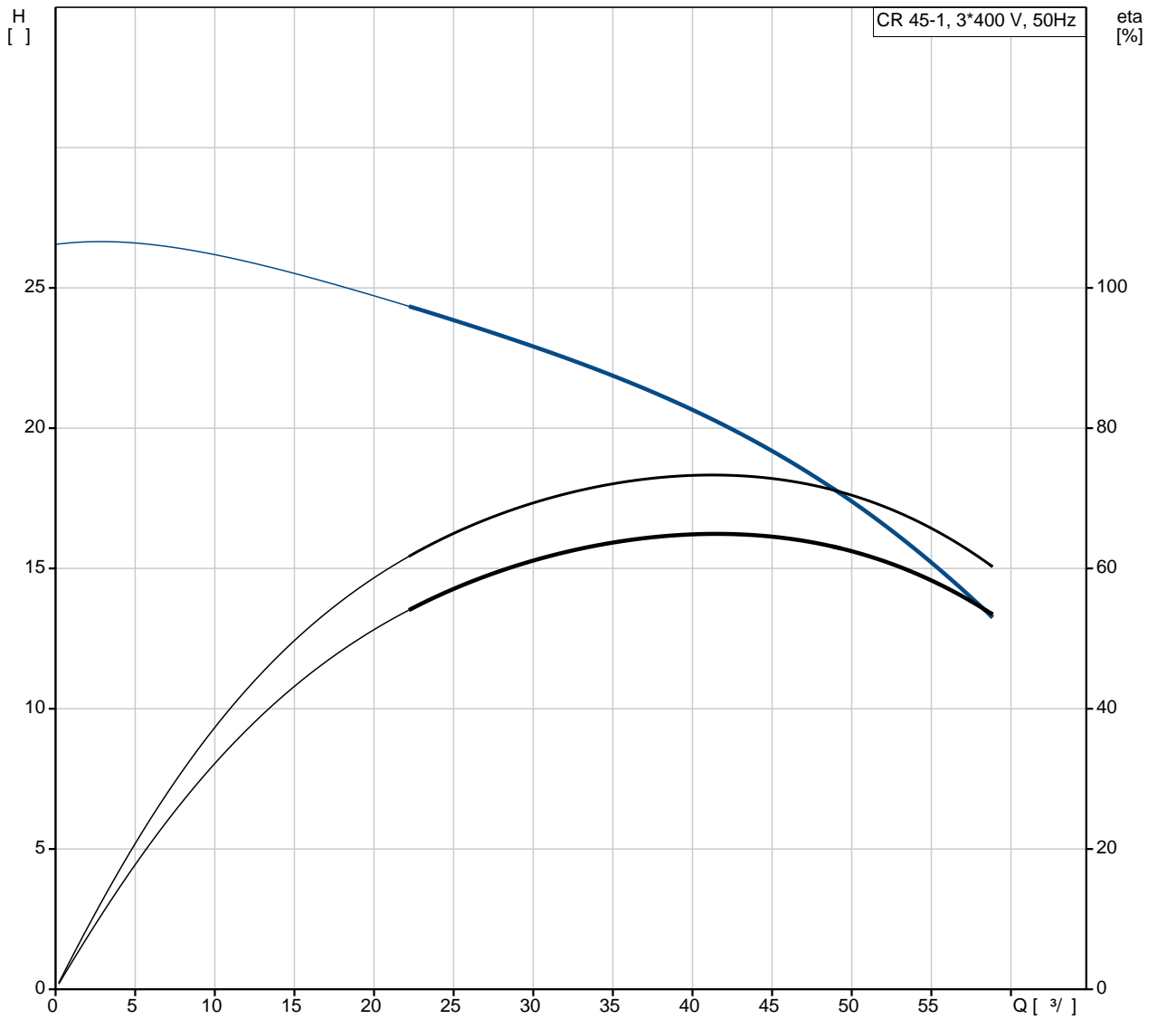
EN 1563 EN-GJS-500-7
ASTM A536 80-55-06

: EN/DIN: EN 1.4301
: AISI/ASTM: AISI 304
: SIC
: Graflon

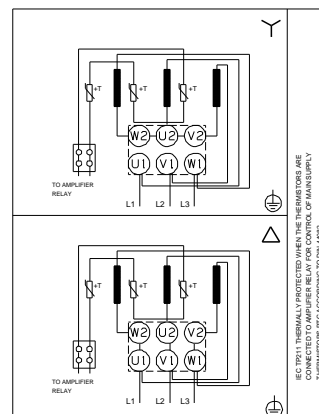
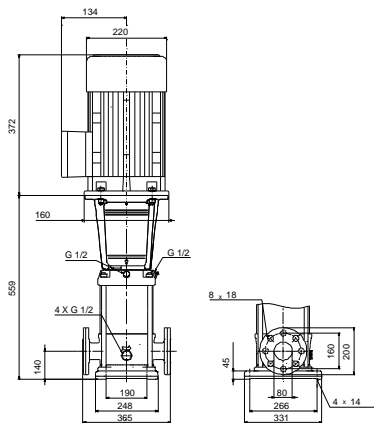
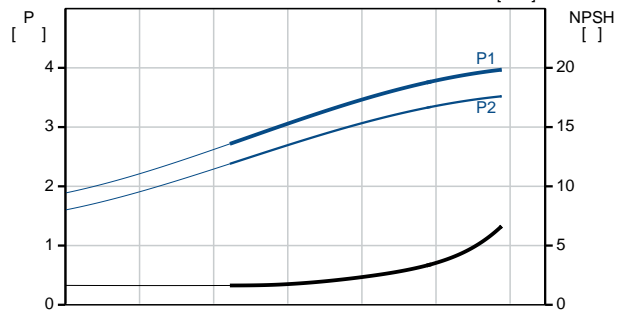
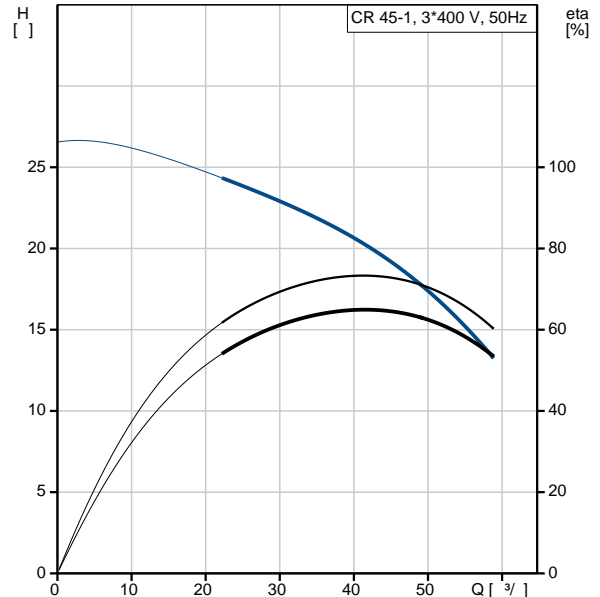
: Maximum ambient temperature: 60 °C
: 16
: - : 16 / 120 °C

16 / -30 °C
 : DIN
 : DN 80
 : DN 80
 : PN 40
 : FT130
 :
 : IEC
 : 112MC
 - : IE3
 - P2: 4
 (2), : 4
 : 50 Hz
 : 3 x 220-240D/380-415Y
 : 13.6/7.90 A
 : 1000-1110 %
 Cos - : 0.87-0.87
 : 2920-2940 /
 : IE3 88,1%
 : 88.1 %
 3/4 : 88.6 %
 1/2 : 85.2 %
 : 2
 (IEC 34-5): 55 Dust/Jetting
 (IEC 85): F
 : 85U05413
 :
 Frequency converter:
 :
 (): 93.3
 (): 116
 : 0.309 ³
 , MEI : 0.70

96122747 CR 45-1 A-F-A-E-HQQE 50

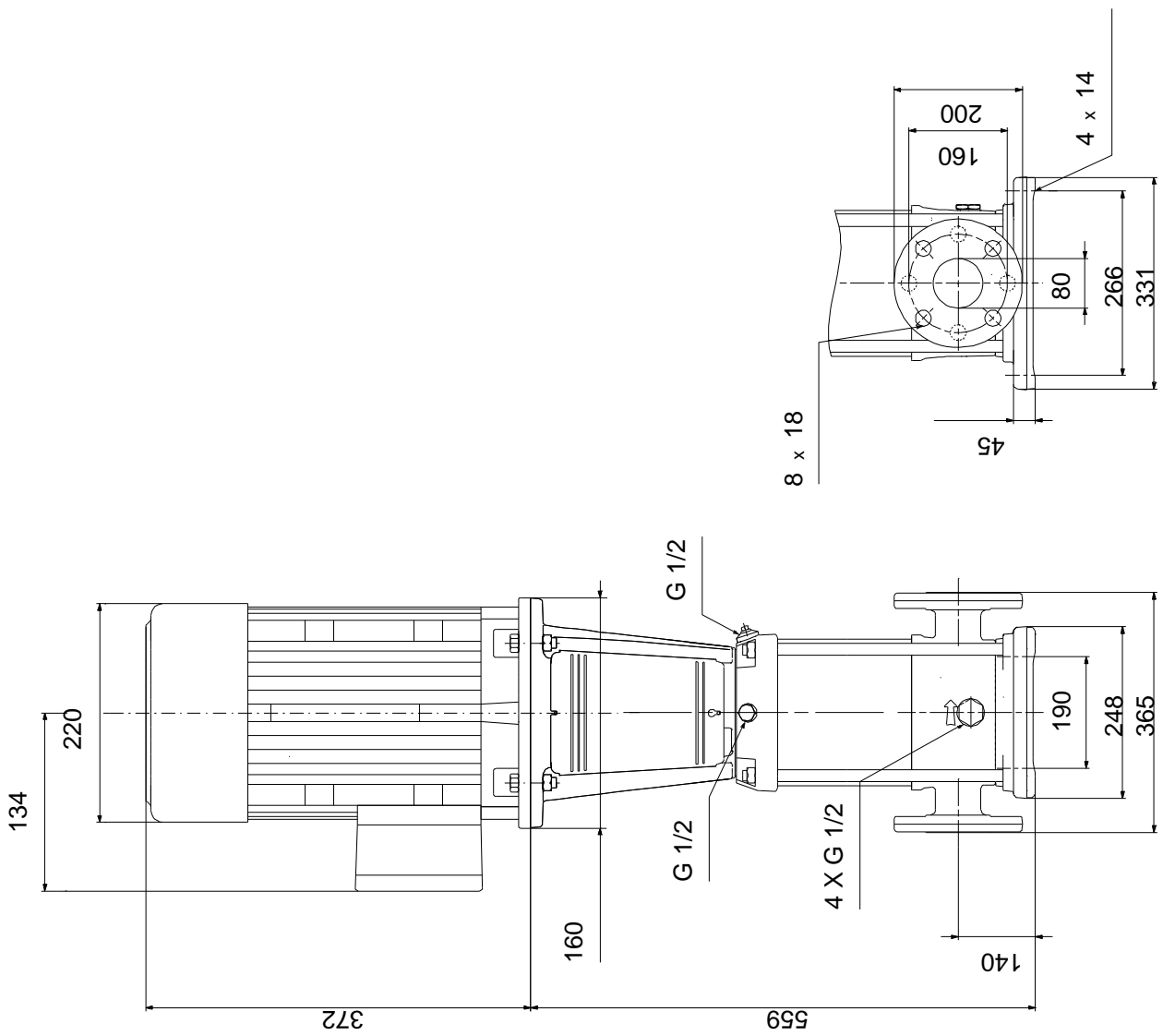


	CR 45-1
	A-F-A-E-HQQE
	96122747
EAN	5700396687919
	2917 /
	45 ^{3/}
	19.1
	26.6
	1
	1
	0
Low NPSH:	N
	HQQE
	CE, EAC, ACS
	ISO9906:2012 3B
	A
	B
	EN 1563 EN-GJS-500-7
	ASTM A536 80-55-06
	EN/DIN: EN 1.4301
	AISI/ASTM: AISI 304
	A
	E
	SIC
	Grafalon
Maximum ambient temperature:	60 °C
	16
	- : 16 / 120 °C
	- : 16 / -30 °C
	DIN
	DN 80
	DN 80
	PN 40
	FT130
	F
	-30 .. 120 °C
	20 °C
	998.2 / ³
	IEC
	112MC
	IE3
- P2:	4
(2),	4



	:	50 Hz
	:	3 x 220-240D/380-415Y
	:	13.6/7.90 A
	:	1000-1110 %
Cos	-	: 0.87-0.87
	:	2920-2940 /
	:	IE3 88,1%
	:	88.1 %
	:	3/4 88.6 %
1/2	:	85.2 %
	:	2
	(IEC 34-5):	55 Dust/Jetting
	(IEC 85):	F
	:	PTC
	:	85U05413
	:	.
MEI	:	' 0.70
():	:	93.3
():	:	116
	:	0.309 ³

96122747 CR 45-1 A-F-A-E-HQQE 50



96122747 CR 45-1 A-F-A-E-HQQE 50

