

1 TPD 50-90/4 A-F-B-BAQE-EX3



: 96087159

7005-2).

EN 12756. Pipework connection is via PN 16 DIN flanges (EN 1092-2 and ISO

Frequency converter:

: 0 .. 120 °C  
 : 20 °C  
 : 998.2 / <sup>3</sup>

: 1400 /

: 14.3 <sup>3</sup>/  
 : 6.3  
 : 169  
 : BAQE  
 - : ISO9906:2012 3B2

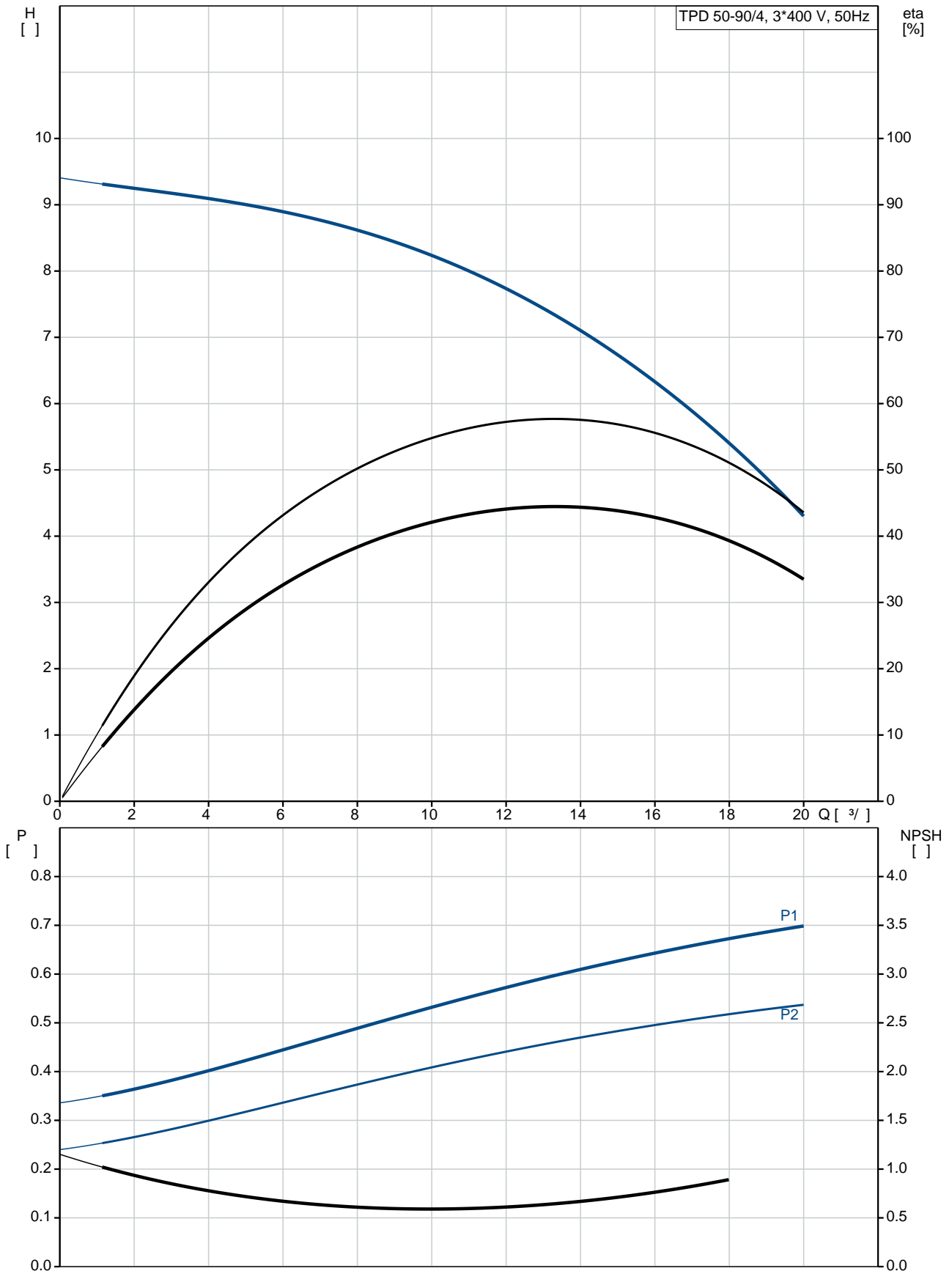
c : EN-GJL-250  
 : ASTM class 35  
 , EN/DIN: CuSn10-C

: -30 .. 40 °C

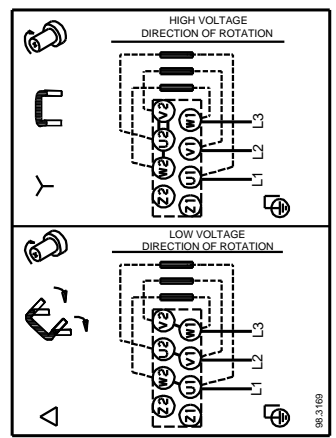
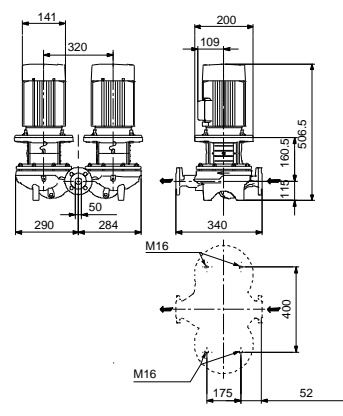
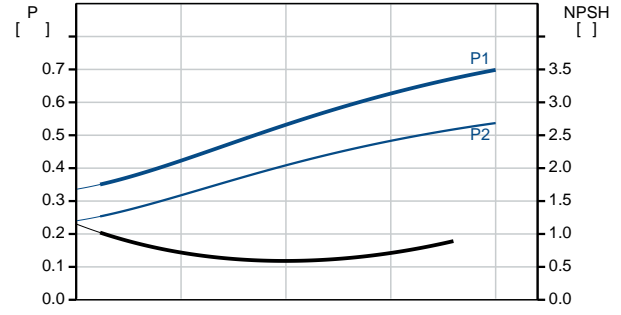
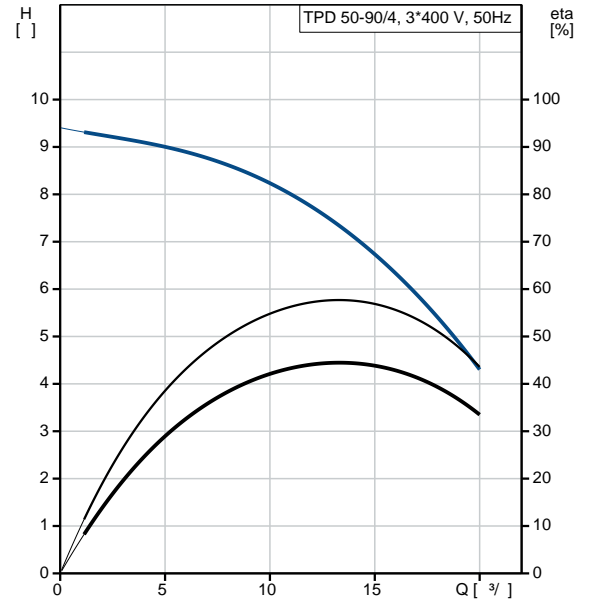
: 16  
 - : 16 / 120 °C  
 : DIN  
 : DN 50  
 : PN 16

: 340  
 : FF165  
 :  
 : 80A  
 - P2: 0.55  
 : 50 Hz  
 : 3 x 220-240D/380-415Y  
 : 2.60/1.50 A  
 : 430-470 %  
 Cos - : 0.79-0.70  
 : 1390-1410 /  
 : 70.0%  
 : 70.0 %  
 3/4 : 79 %  
 1/2 : 78.1 %  
 : 4  
 (IEC 34-5): 55 Dust/Jetting  
 (IEC 85): F  
 : 87100310  
 :  
 , MEI : 0.50  
 ( ): 89.4  
 ( ): 104  
 : 0.38 <sup>3</sup>  
 C : HU  
 : 8413705100

## 96087159 TPD 50-90/4 A-F-B-BAQE-EX3 50



	TPD 50-90/4
	A-F-B-BAQE-EX3
	96087159
EAN	5700395311150
	1400 /
	14.3 <sup>3/</sup>
	6.3
	90
	169
	BAQE
	ISO9906:2012 3B2
	A
c	EN-GJL-250
	ASTM class 35
EN/DIN:	CuSn10-C
	B
	-30 .. 40 °C
	16
	16 / 120 °C
	DIN
	DN 50
	PN 16
	340
	FF165
	F
	0 .. 120 °C
	20 °C
	998.2 / <sup>3</sup>
	80A
- P2:	0.55
	50 Hz
	3 x 220-240D/380-415Y
	2.60/1.50 A
	430-470 %
Cos	0.79-0.70
	1390-1410 /
	70.0%
	70.0 %
	3/4 79 %
1/2	78.1 %
	4
(IEC 34-5):	55 Dust/Jetting
(IEC 85):	F

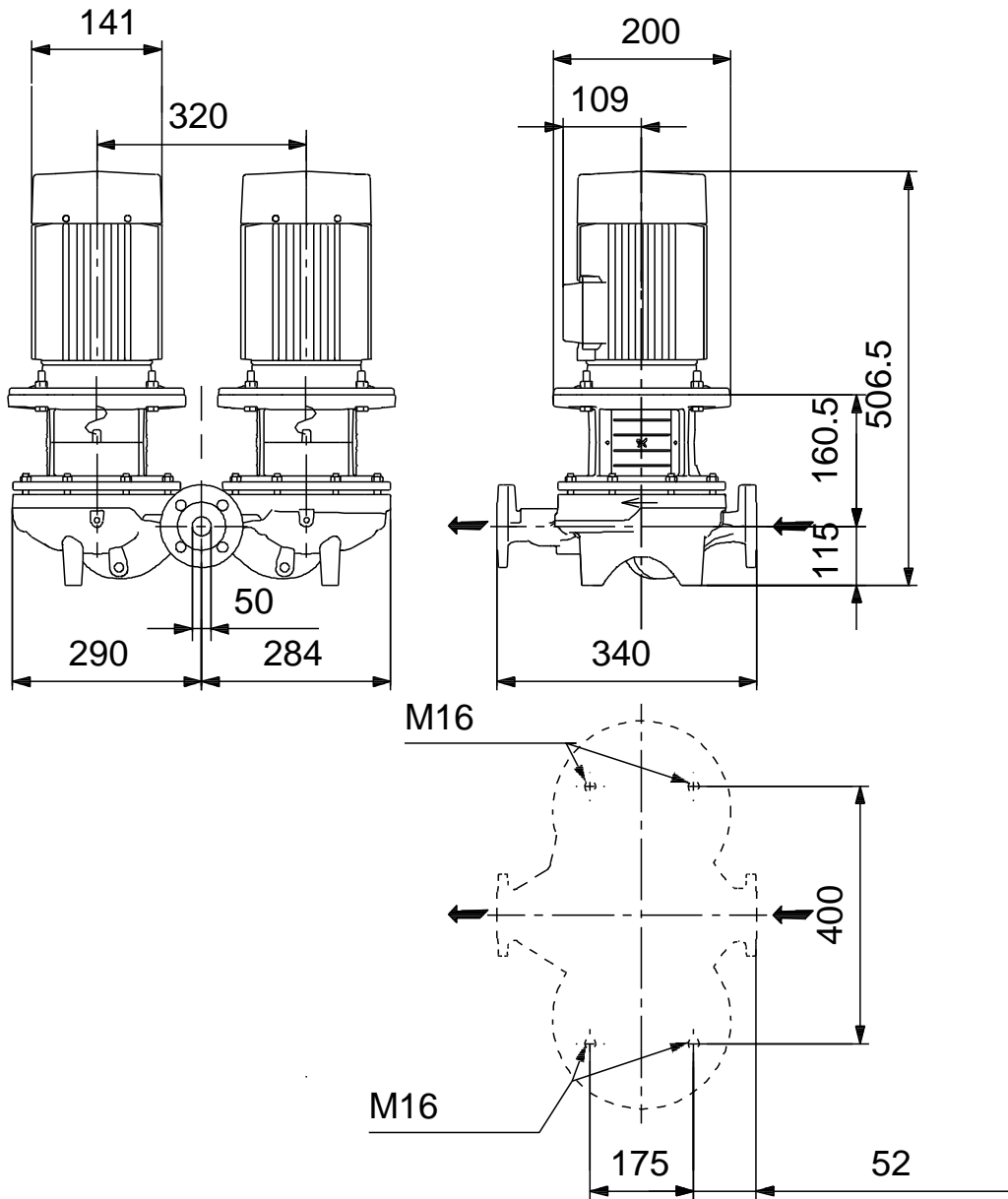




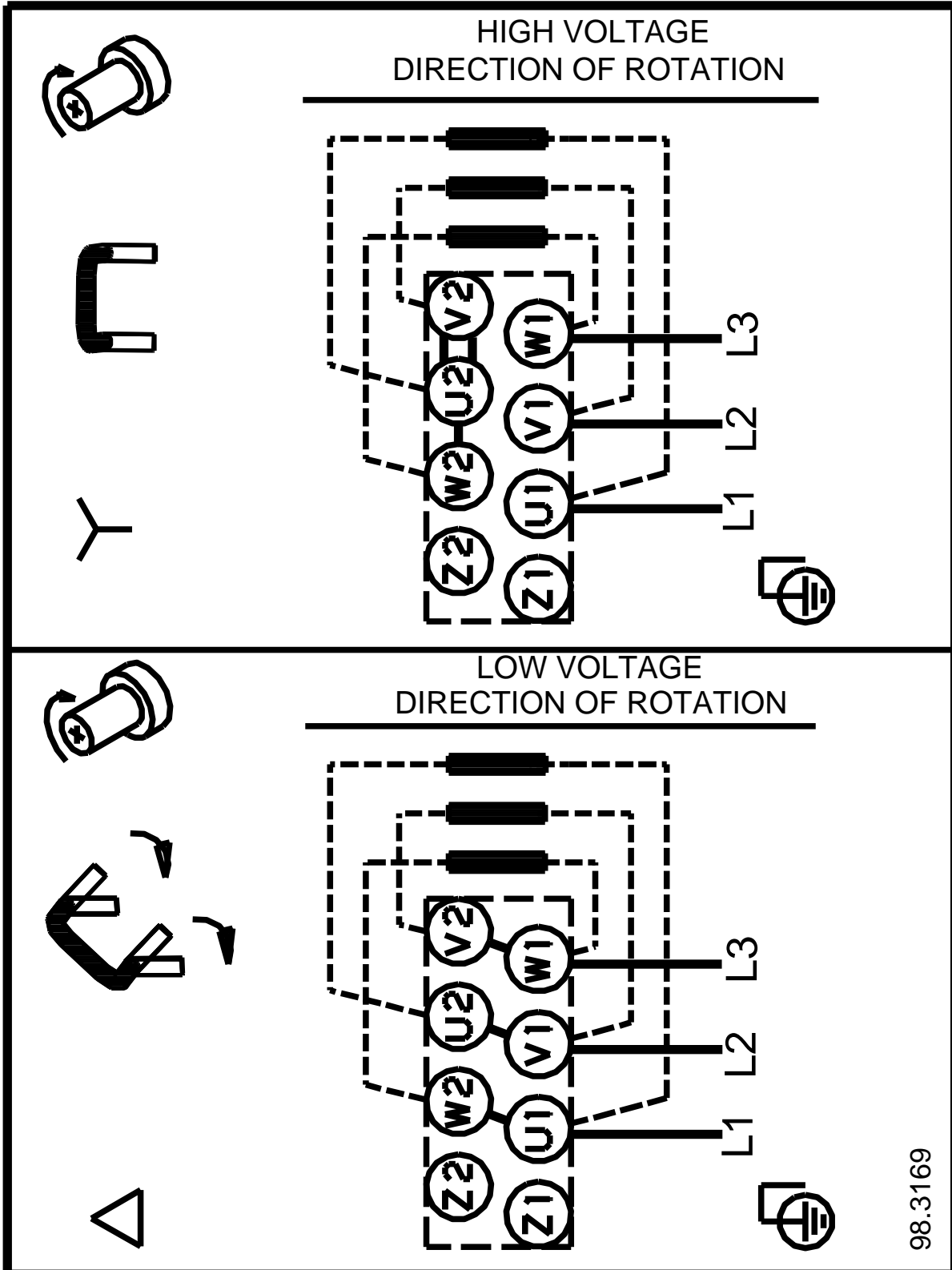
16.12.2020

:	87100310
:	
:	
:	
, MEI :	0.50
( ):	89.4
( ):	104
:	0.38 <sup>3</sup>
C :	HU
:	8413705100

## 96087159 TPD 50-90/4 A-F-B-BAQE-EX3 50



## 96087159 TPD 50-90/4 A-F-B-BAQE-EX3 50



98.3169