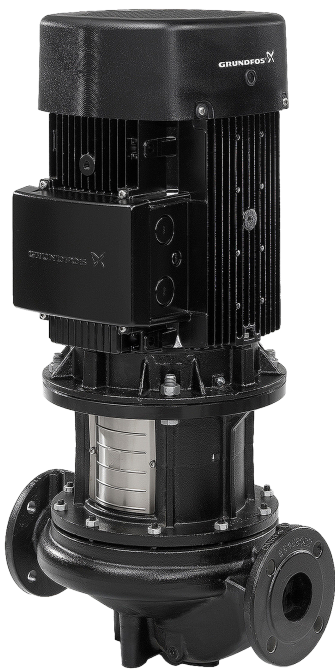


1 TP 50-240/2 A-F-A-BQQE-IX1



: 96086997

12756. Pipework connection is via PN 16 DIN flanges (EN 1092-2 and ISO 7005-2).

EN

Frequency converter:

: -25 .. 120 °C
: 20 °C
: 998.2 / 3

: 2900 /

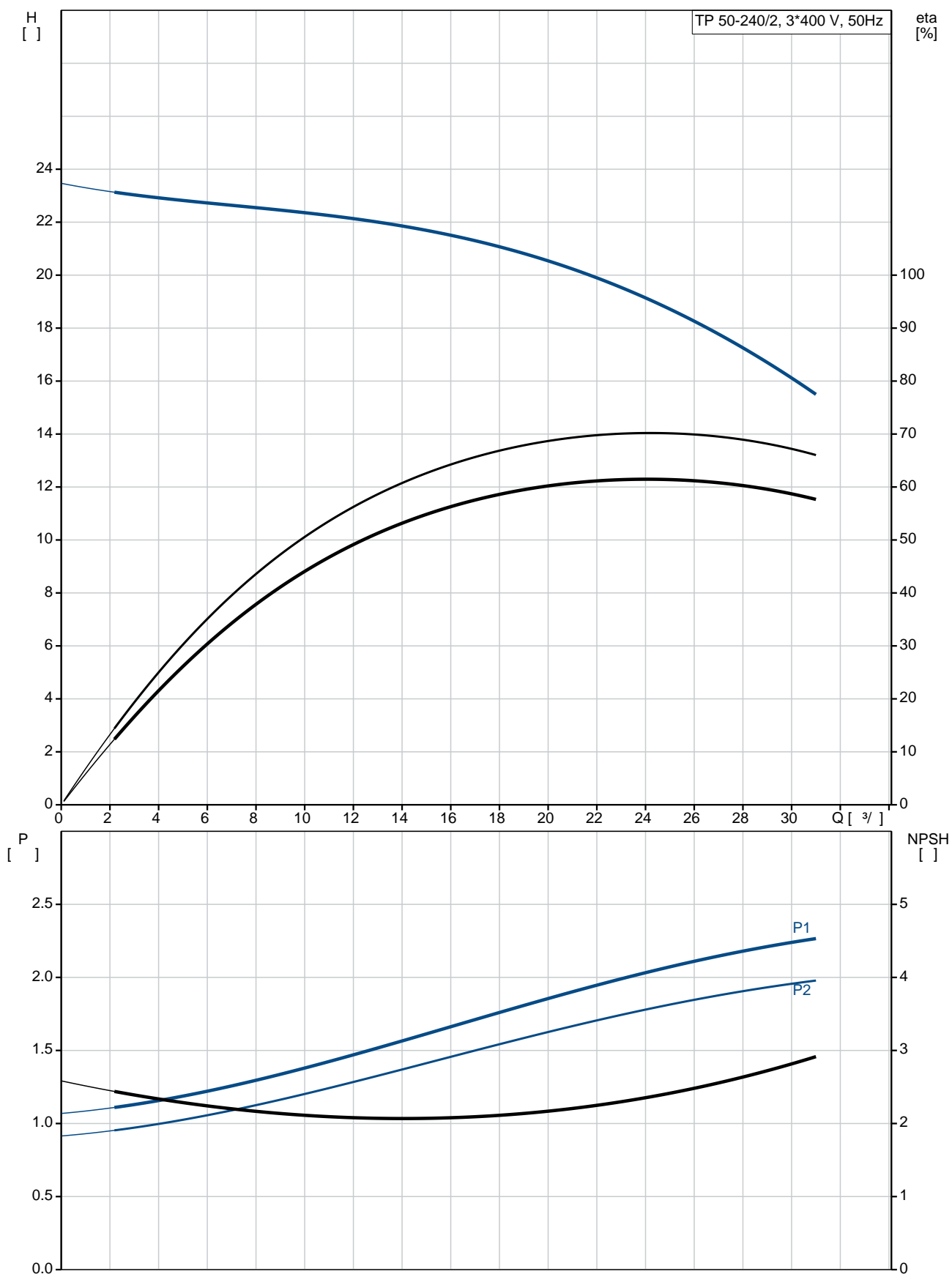
: 24.1 3/
: 19.1
: 130
: BQQE
- : ISO9906:2012 3B2

c : EN-GJL-250
ASTM class 35

, EN/DIN: EN-GJL-200
, AISI/ASTM: ASTM class 30

: -30 .. 60 °C
 : 16
 - : 16 / 120 °C
 : DIN
 : DN 50
 : PN 16
 : 340
 : FF165
 :
 : 90LE
 - : IE3
 - P2: 2.2
 : 50 Hz
 : 3 x 220-240D/380-415Y
 : 8.00/4.60 A
 : 840-920 %
 : 2890-2910 /
 : IE3 85,9%
 : 85.9 %
 3/4 : 88.2 %
 1/2 : 88.0 %
 : 2
 (IEC 34-5): 55 Dust/Jetting
 (IEC 85): F
 : 99583819
 :
 , MEI : 0.70
 (): 53.2
 (): 65
 : 0.21 ³
 Danish VVS No.: 381703240
 Finnish LVI No.: 4616539

96086997 TP 50-240/2 A-F-A-BQQE-IX1 50



TP 50-240/2
A-F-A-BQQE-IX1
96086997
EAN : 5700395309539

2900 /
24.1 ³/_l
19.1
240
130
BQQE
ISO9906:2012 3B2
A

EN-GJL-250
ASTM class 35

EN/DIN: EN-GJL-200
AISI/ASTM: ASTM class 30
A

-30 .. 60 °C
16
16 / 120 °C

DIN
DN 50
PN 16
340
FF165
F

-25 .. 120 °C
20 °C
998.2 / ³

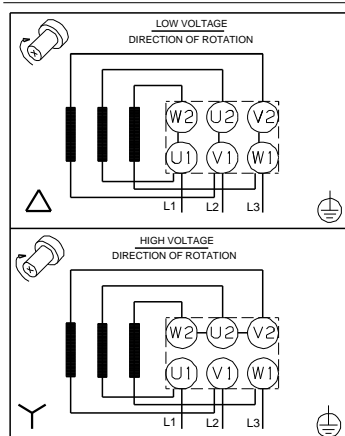
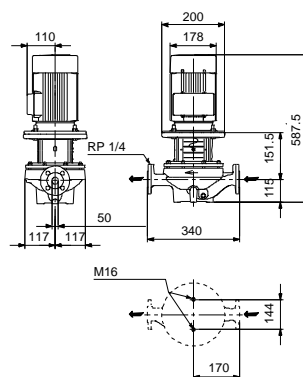
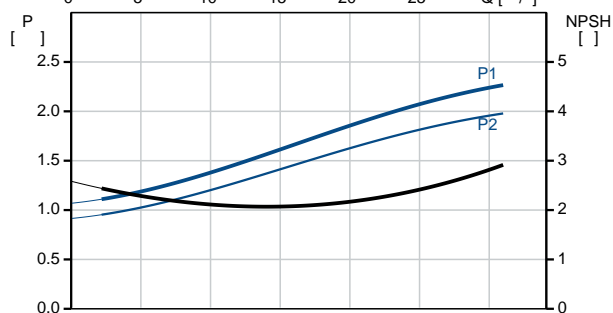
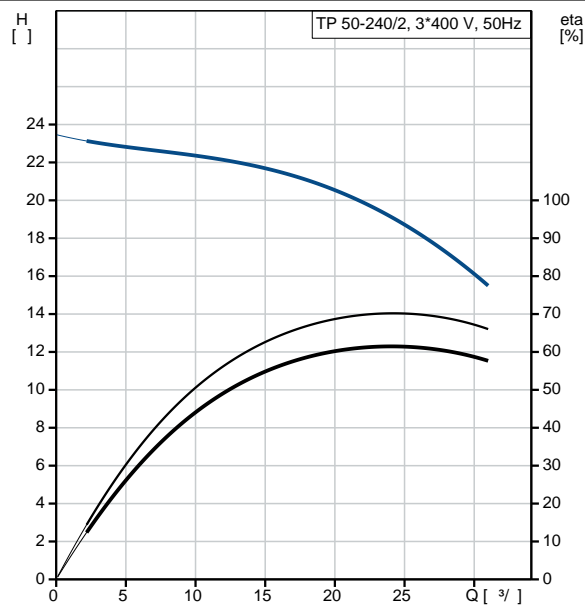
90LE
IE3
- P2: 2.2
50 Hz
3 x 220-240D/380-415Y

8.00/4.60 A
840-920 %
2890-2910 /
IE3 85,9%

85.9 %
3/4 88.2 %

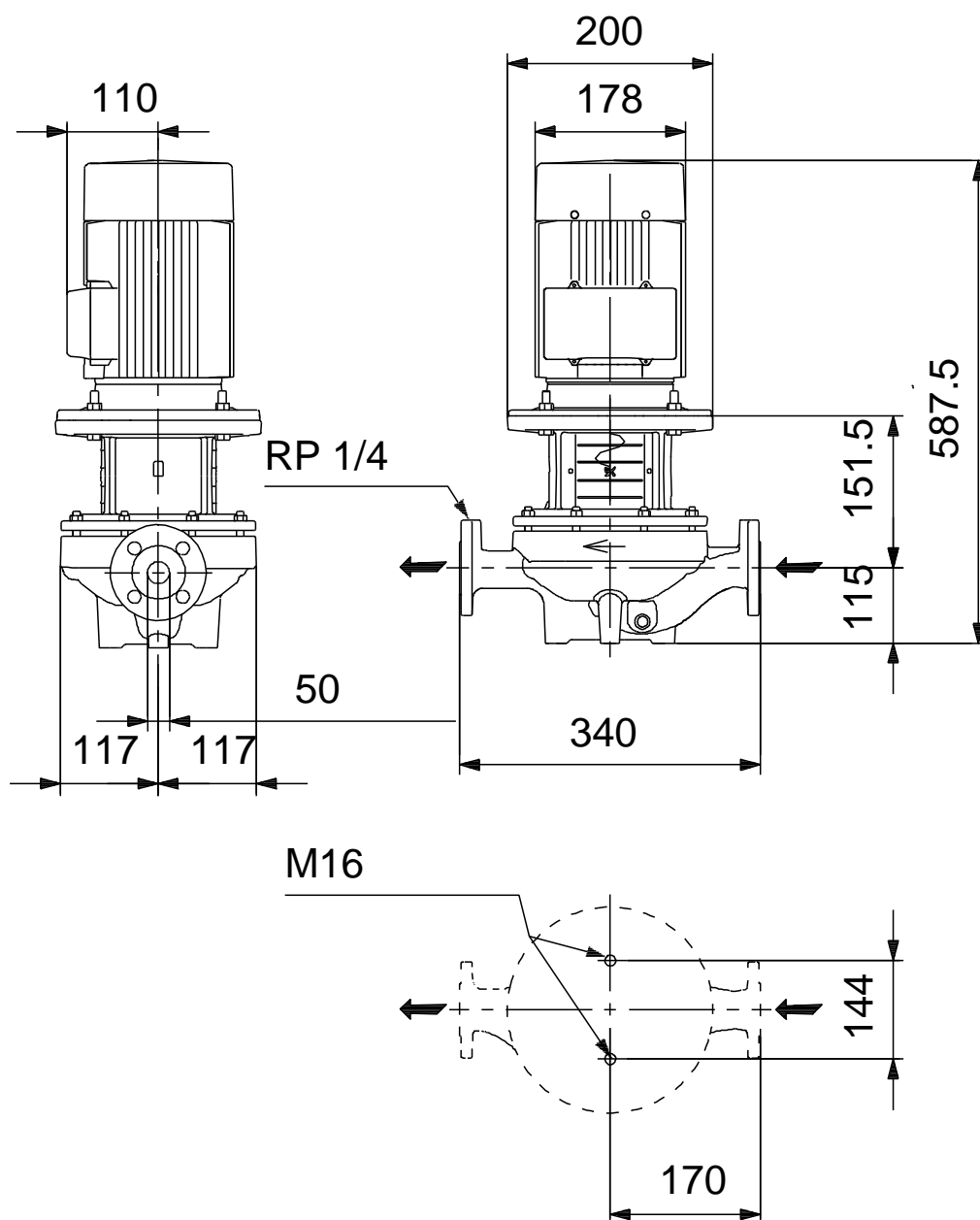
1/2 88.0 %

2
(IEC 34-5): 55 Dust/Jetting



(IEC 85):	F
:	.
:	99583819
:	.
:	.
:	.
, MEI :	0.70
():	53.2
():	65
:	0.21 ³
Danish VVS No.:	381703240
Finnish LVI No.:	4616539

96086997 TP 50-240/2 A-F-A-BQQE-IX1 50



96086997 TP 50-240/2 A-F-A-BQQE-IX1 50

