

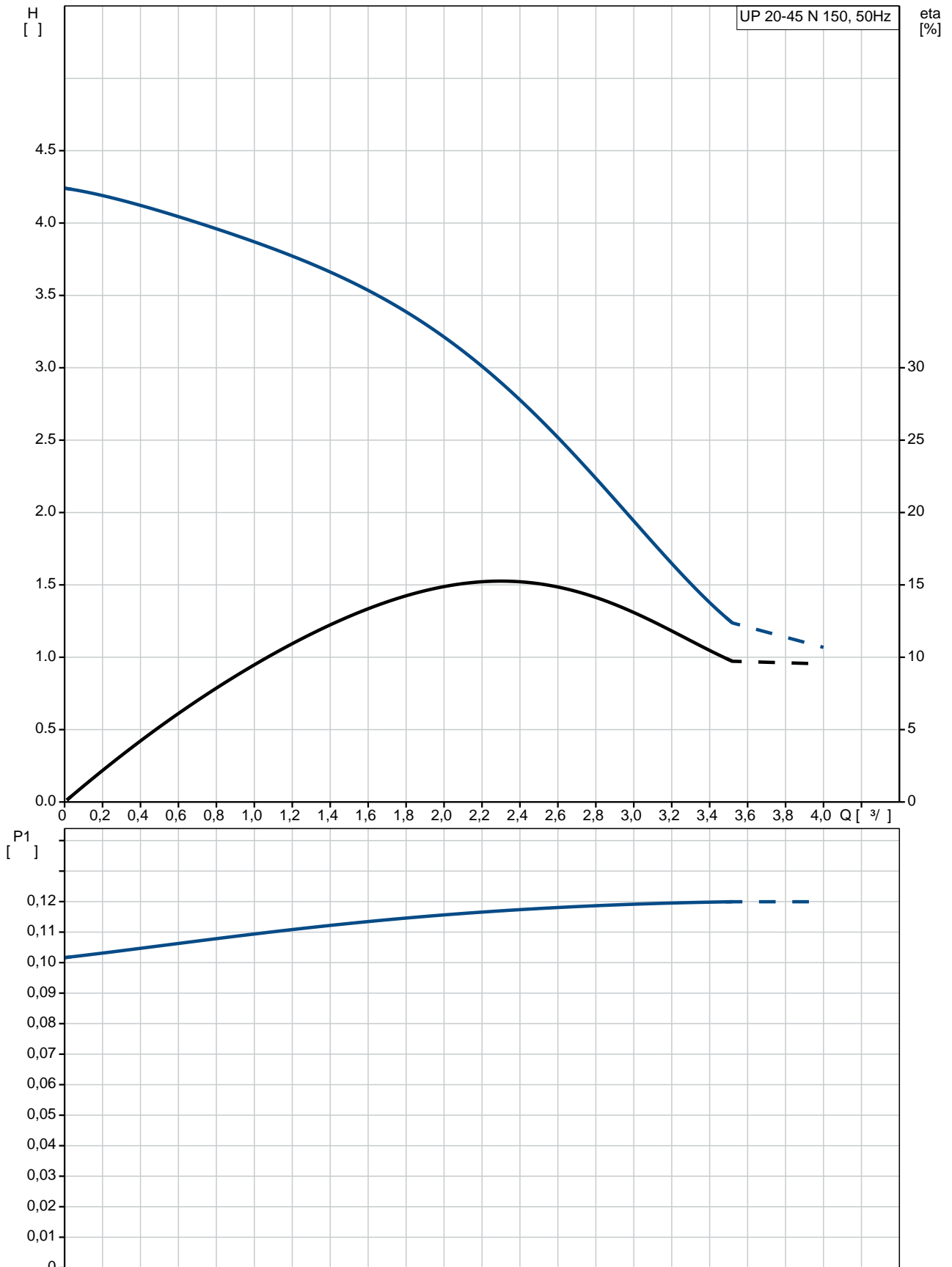
1 UP 20-45 N 150



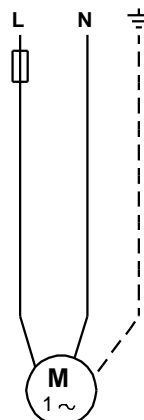
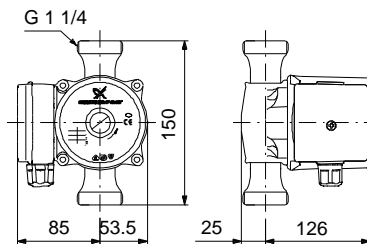
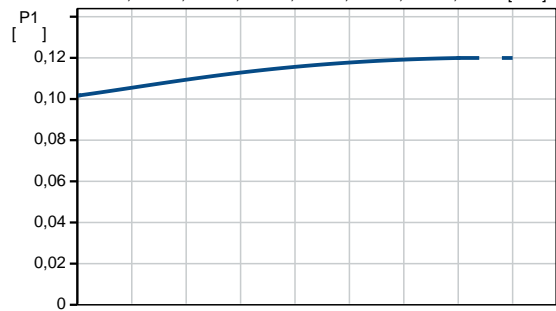
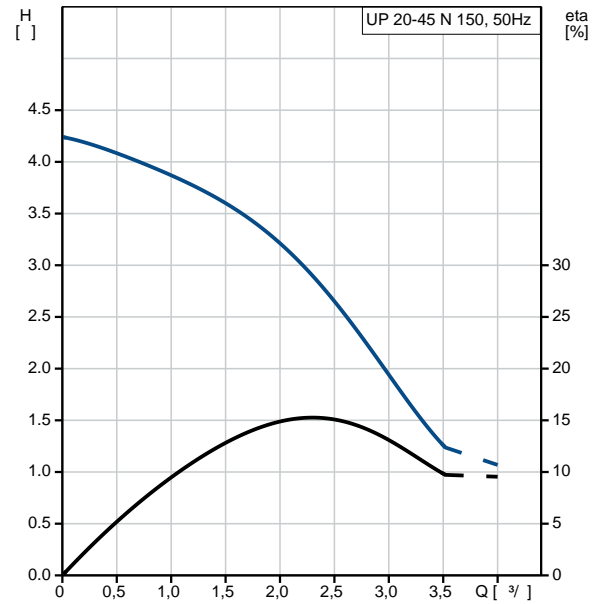
: 95906472

: PES/PP.
 1-
 : -25 .. 110 °C
 : 60 °C
 : 983.2 / 3
 TF : 95
 : CE,EAC,WEEE
 :
 : DIN W.-Nr. 1.4301
 : AISI 304
 : , PES/PP
 :
 : T : - 80 0C: 40 °C
 : : 10
 : : G 1 1/4
 : : PN 10
 : : 150
 : :
 : : 120
 : : 50 Hz
 : : 1 x 230
 3: : 0.52 A

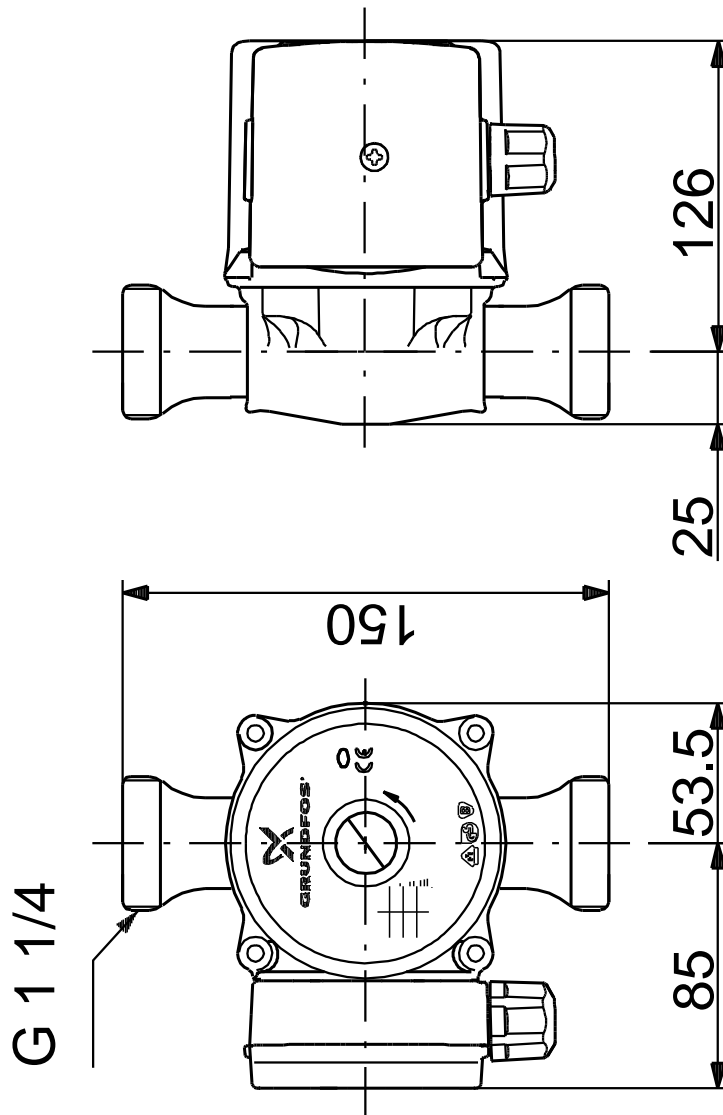
95906472 UP 20-45 N 150 50



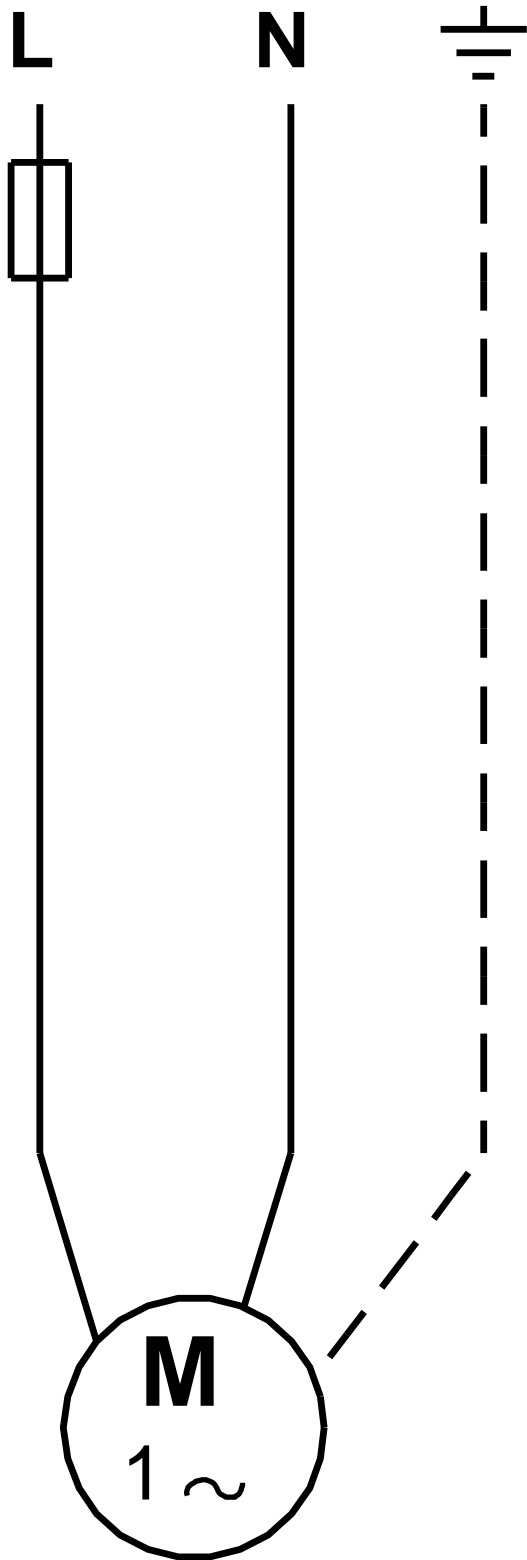
	UP 20-45 N 150
	95906472
EAN	5700310459660
	1
	45
TF	95
	CE,EAC,WEEE
	DIN W.-Nr. 1.4301
	AISI 304
	, PES/PP
80 °C:	40 °C
	10
	G 1 1/4
	PN 10
	150
	-25 .. 110 °C
	60 °C
	983.2 / 3
	120
	50 Hz
	1 x 230
3:	0.52 A
	2.5
(IEC 34-5):	X2D
(IEC 85):	F
	CONTACT
	9H
	3.6
	3.8
	0.008 3
Danish VVS No.:	380625100
Swedish RSK No.:	5803038
Finnish LVI No.:	4615608
Norwegian NRF no.:	9042213
C	RS
	8413703000



95906472 UP 20-45 N 150 50



95906472 UP 20-45 N 150 50



! [], .