

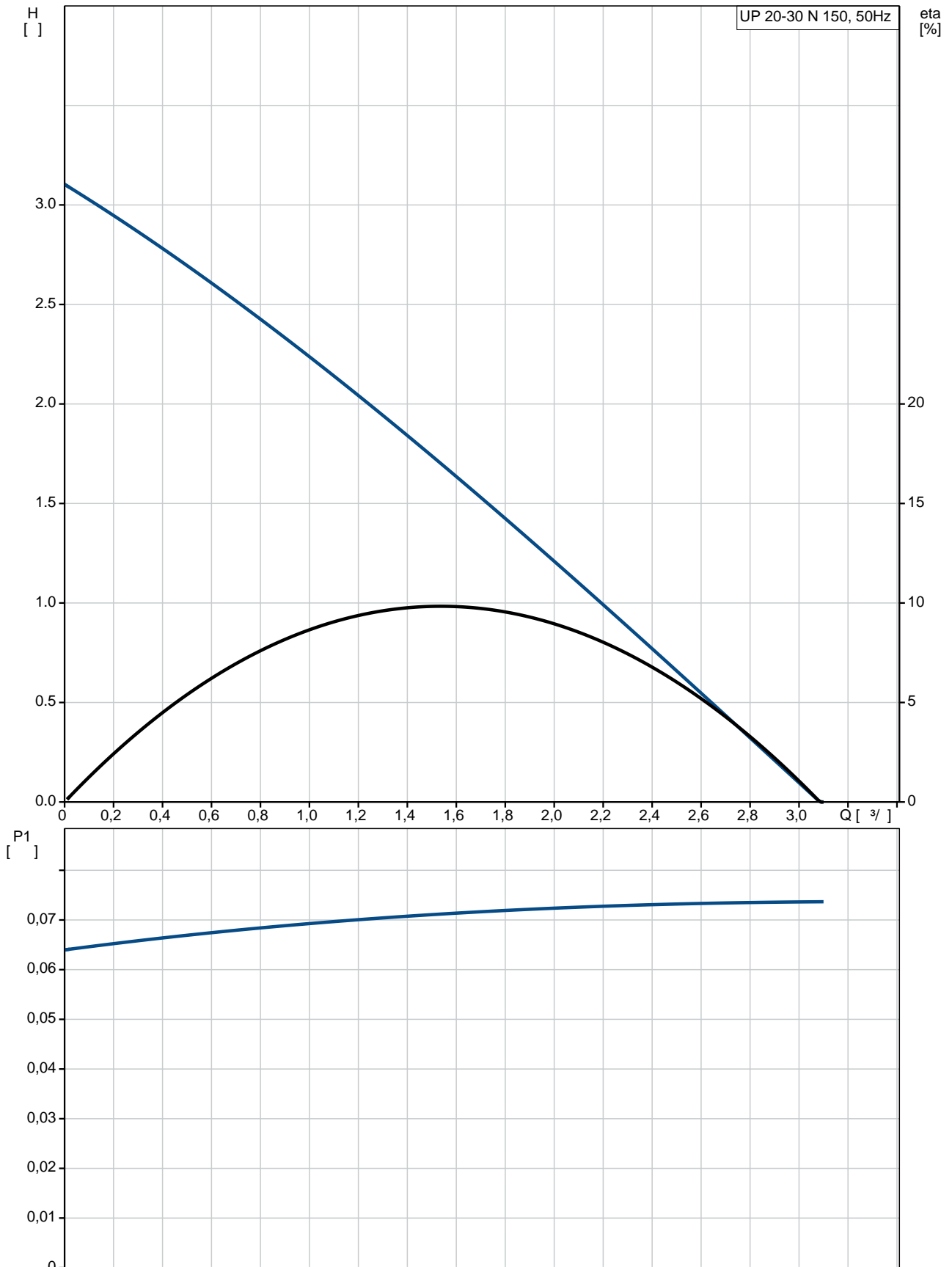
1 UP 20-30 N 150



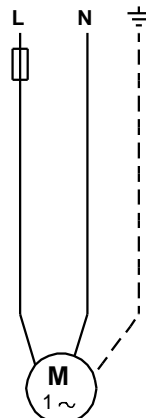
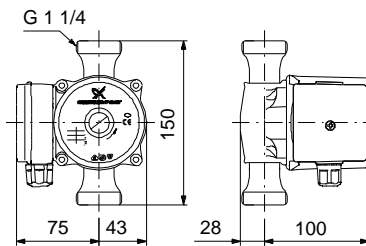
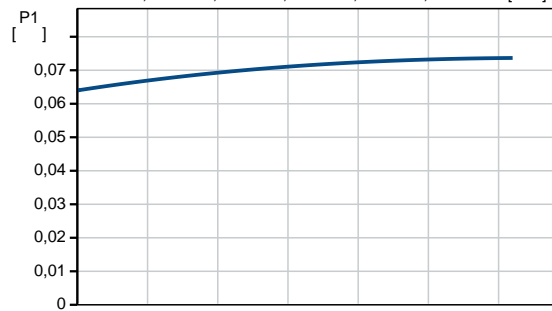
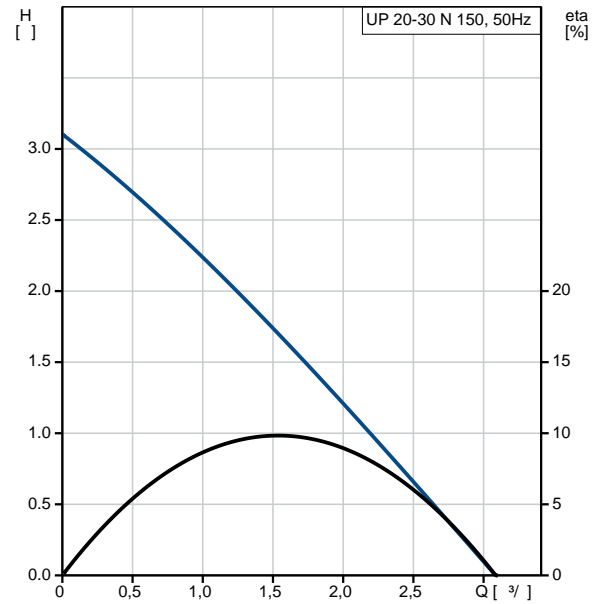
: 59643500

: PES/PP.
 1-
 : 2 .. 110 °C
 : 60 °C
 983.2 / ³
 TF : 95
 : CE,VDE,EAC,WEEE
 DIN W.-Nr. 1.4301
 AISI 304
 , PES/PP
 .T : - 80 0C: 80 °C
 : 10
 : G 1 1/4
 : PN 10
 : 150
 :
 : 75
 : 50 Hz
 : 1 x 230
 3: 0.31 A

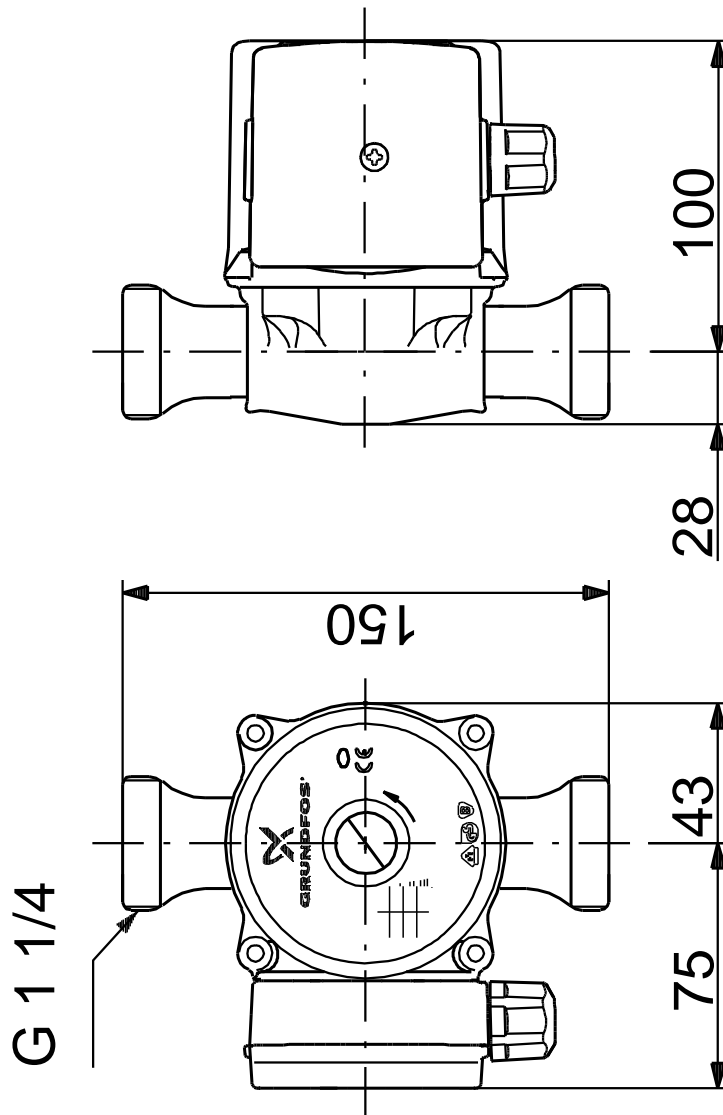
59643500 UP 20-30 N 150 50



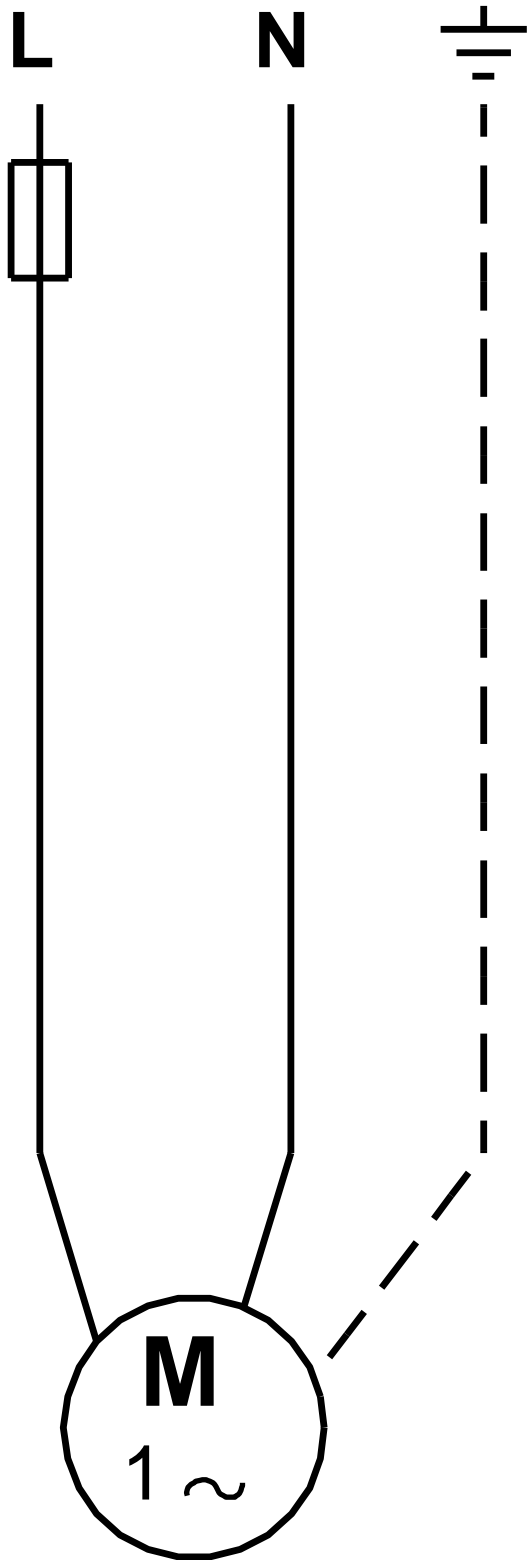
	UP 20-30 N 150
	59643500
EAN	5708601058745
	1
	30
TF	95
	CE,VDE,EAC,WEEE
	DIN W.-Nr. 1.4301
	AISI 304
	, PES/PP
80 OC:	80 °C
	10
	G 1 1/4
	PN 10
	150
	2.. 110 °C
	60 °C
	983.2 / ³
	75
	50 Hz
	1 x 230
3:	0.31 A
	2
(IEC 34-5):	IP44
(IEC 85):	F
	9H
	2.1
	2.3
	0.004 ³
Danish VVS No.:	380621100
Swedish RSK No.:	5803029
Finnish LVI No.:	4615606
Norwegian NRF no.:	9042211
C	RS
	8413703000



59643500 UP 20-30 N 150 50



59643500 UP 20-30 N 150 50



! [], .