

1 UP 20-07 N 150



: 59640506

, PES/PP.

: 2 .. 110 °C
: 60 °C
983.2 / ³

TF : 95
: CE,VDE,EAC,WEEE

DIN W.-Nr. 1.4301
AISI 304
, PES/PP

.T : - 80 0C: 80 °C

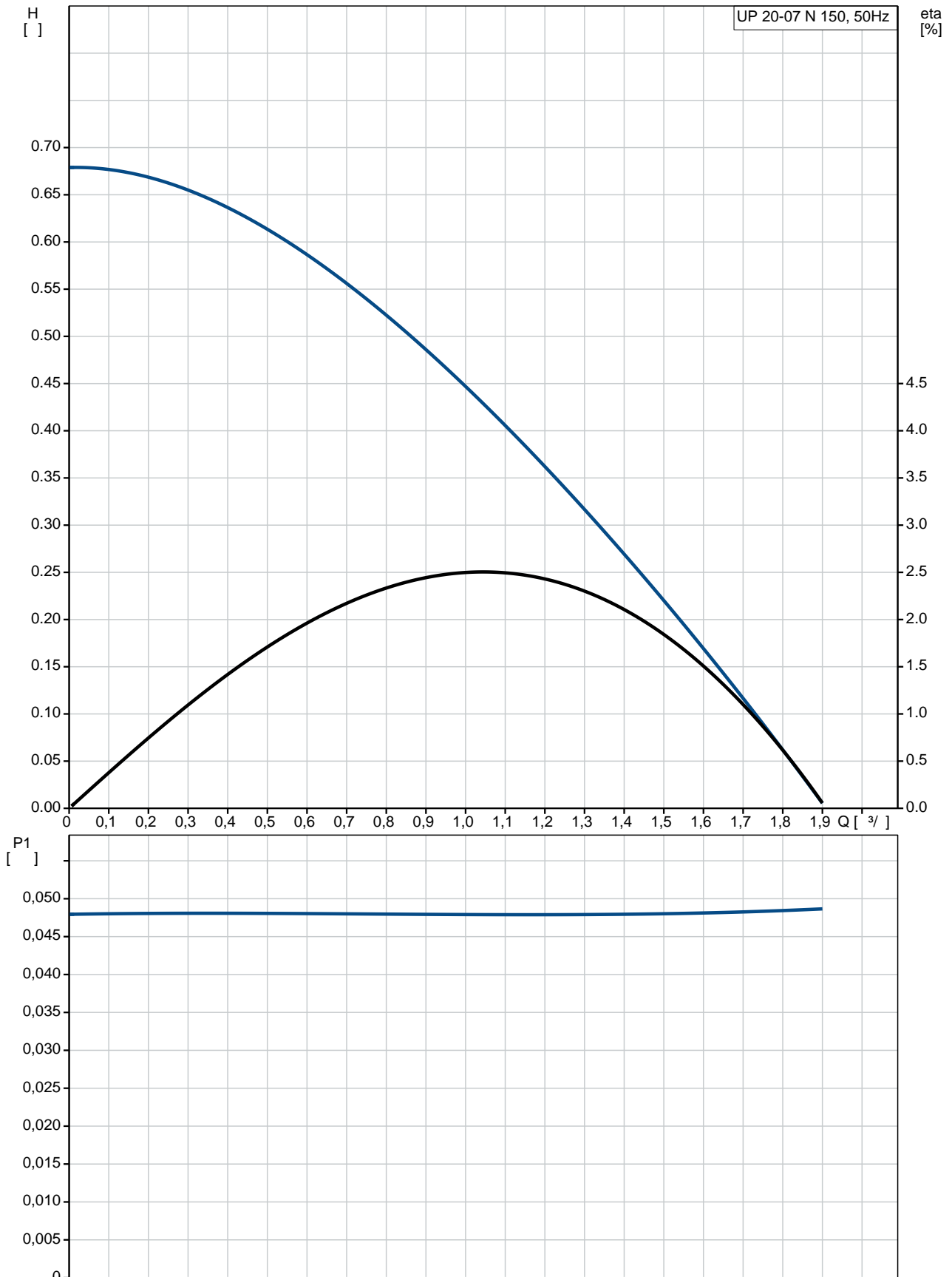
: 10
: G 1 1/4
: PN 10
: 150

: 50
: 50 Hz
: 1 x 230
3: 0.24 A

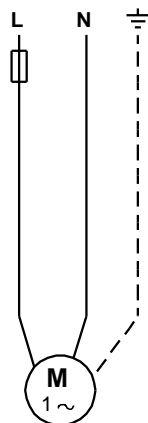
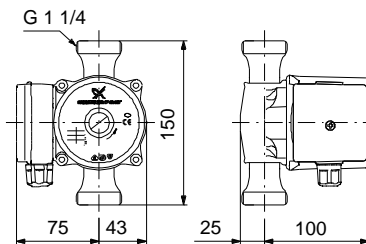
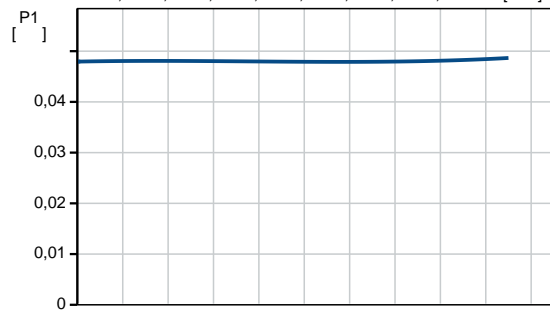
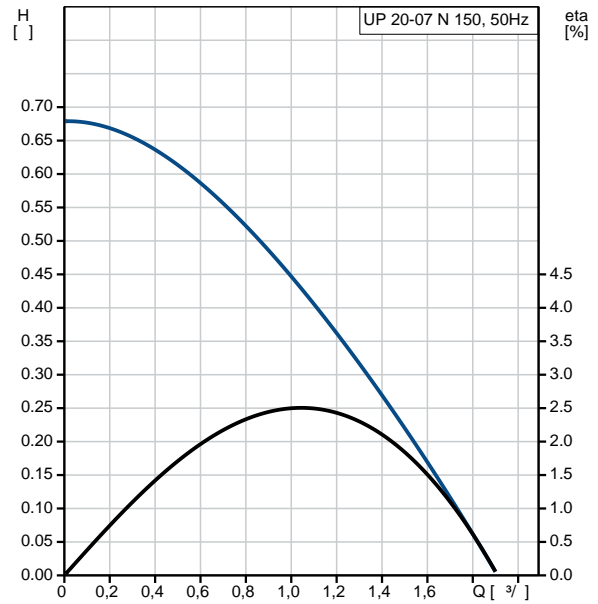
- : 4
(IEC 34-5): IP44
(IEC 85): F

:
:
:
:
:
Danish VVS No.: 380611000
Finnish LVI No.: 4615602
Norwegian NRF no.: 9042207
C : RS
: 8413703000

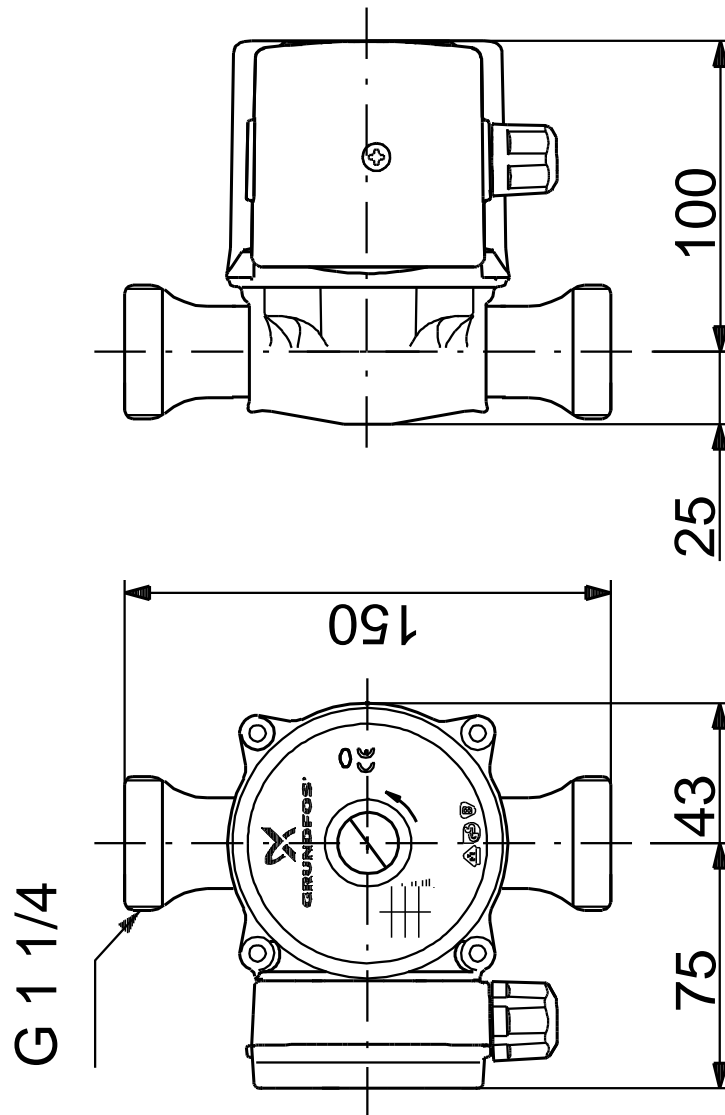
59640506 UP 20-07 N 150 50



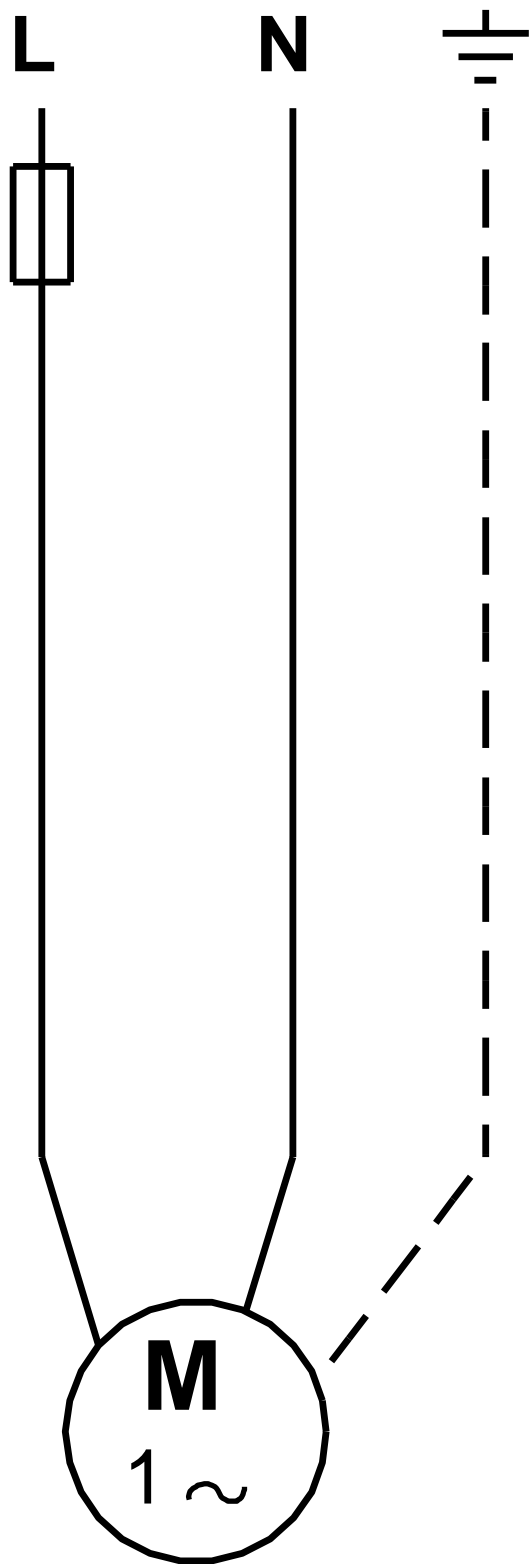
	UP 20-07 N 150
	59640506
EAN	5708601058721
	1
	7
TF	95
	CE, VDE, EAC, WEEE
	DIN W.-Nr. 1.4301
	AISI 304
	, PES/PP
80 OC:	80 °C
	10
	G 1 1/4
	PN 10
	150
	2.. 110 °C
	60 °C
	983.2 / ³
	50
	50 Hz
	1 x 230
3:	0.24 A
	4
(IEC 34-5):	IP44
(IEC 85):	F
	9H
	2.1
	2.3
	0.004 ³
Danish VVS No.:	380611000
Finnish LVI No.:	4615602
Norwegian NRF no.:	9042207
C	RS
	8413703000



59640506 UP 20-07 N 150 50



59640506 UP 20-07 N 150 50



! [], .