

1 SP 3A-29



: 10002B29

, EN 1.4301 (AISI 304),

MS40002.2

40 °C.

Pt1000.
(DOL).

Maximum liquid temperature: 40 °C
 . t 0,15 / : 40 °C
 : 998.2 / °C

: 2900 /

: 3 °/
 : 129
 : HM/CER
 : CE,EAC
 - : ISO9906:2012 3B
 : T40
 : SPLINE

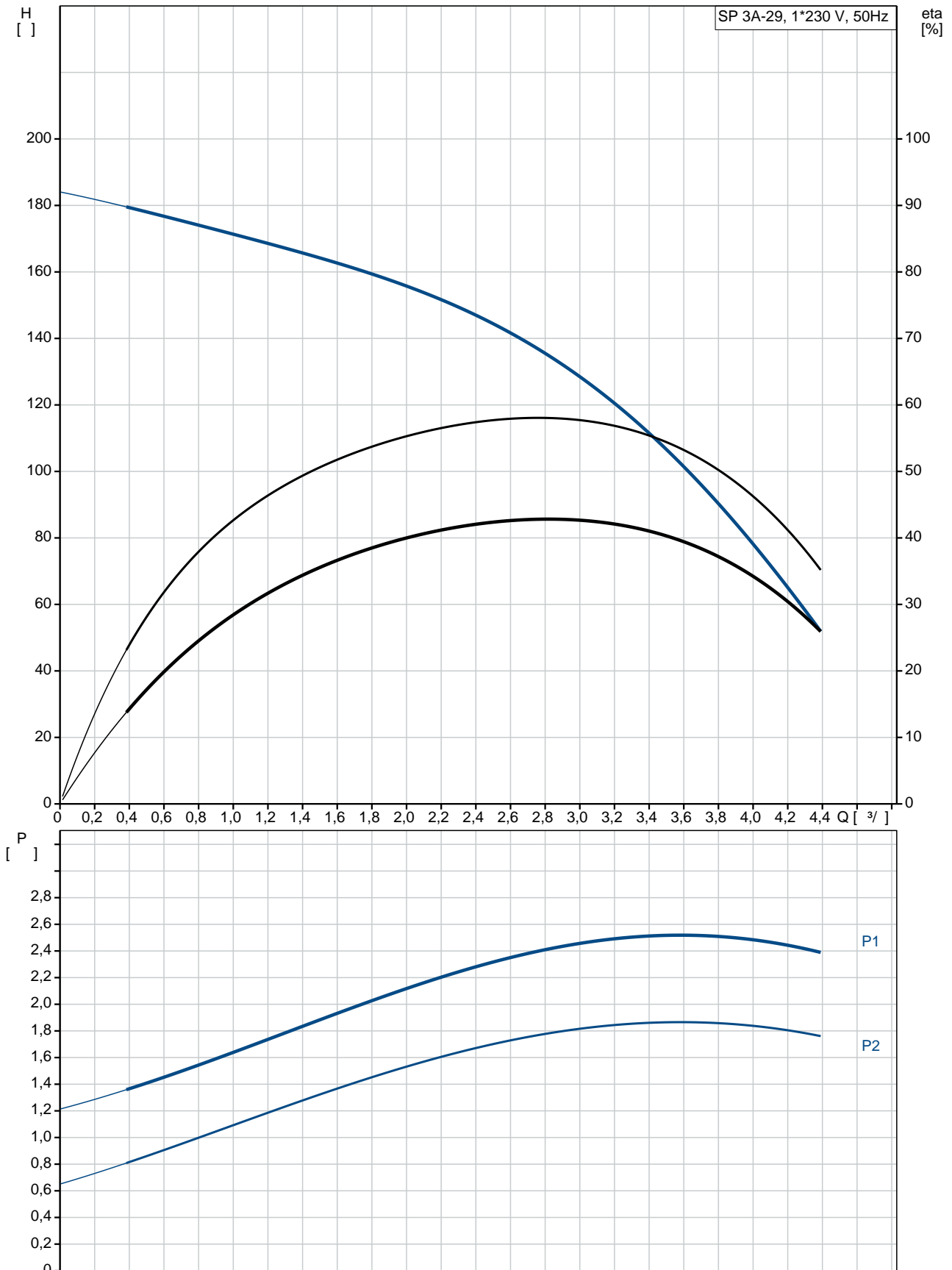
EN 1.4301
 AISI AISI 304

EN 1.4301
 AISI AISI 304

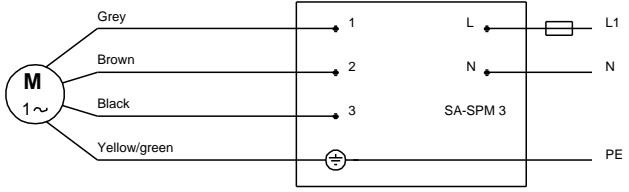
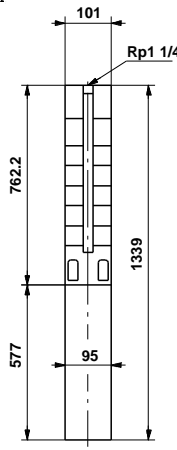
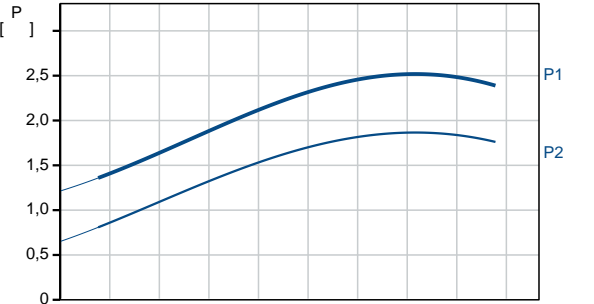
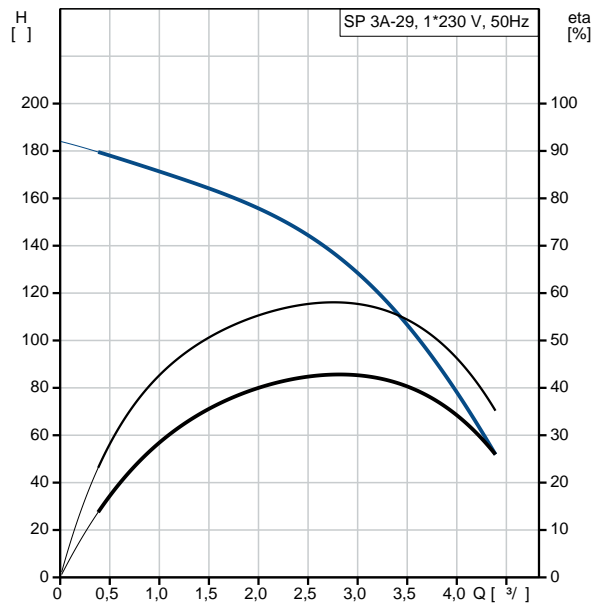
DIN W.-Nr. 1.4301
 AISI 304

: Rp1 1/4
 : 4 inch
 :
 : MS4000
 : CSCR
 - P2: 2.2
 (2), : 2.2
 : 50 Hz
 : 1 x 220-230
 : 14.6-15 A
 : 540-600 %
 Cos - : 0.96-0.96
 : 2850-2870 /
 :
 (IEC 34-5): IP68
 (IEC 85): F
 :
 : 79214507
 :
 : MEI : 0.70
 ErP : EuP /
 : 29.1
 : 30.9
 : 21.7 ³
 C : DK
 : 8413702900

10002B29 SP 3A-29 50

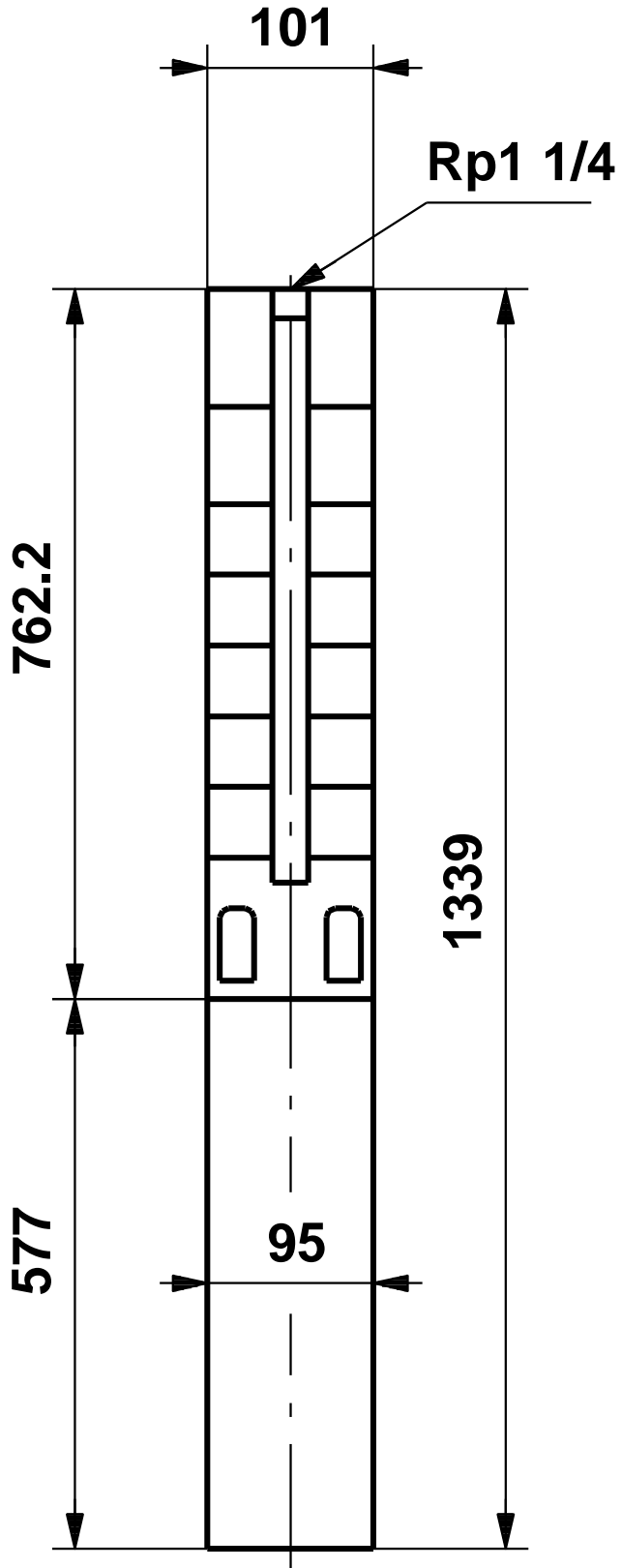


Model	SP 3A-29
EAN	10002B29 5700391124587
Flow rate	2900 / 3 ³ / ₄
Head	129 29
Material	NONE HM/CER
Standards	CE, EAC ISO9906:2012 3B A YES
Temperature	T40
Curve	SPLINE
Material	EN 1.4301 AISI AISI 304
Material	EN 1.4301 AISI AISI 304
Material	DIN W.-Nr. 1.4301 AISI 304
Thread	Rp1 1/4 4 inch
Maximum liquid temperature:	40 °C
... t 0,15 /	40 °C
	20 °C
	998.2 / ³
	MS4000
	CSCR
	GRUNDFOS
- P2:	2.2
(2),	2.2
	50 Hz
	1 x 220-230
	14.6-15 A
	540-600 %
Cos	0.96-0.96
	2850-2870 /
(IEC 34-5):	IP68
(IEC 85):	F
	79214507



:	
MEI :	0.70
ErP :	EuP / .
:	29.1
:	30.9
:	21.7 ³
C :	DK
:	8413702900

10002B29 SP 3A-29 50



10002B29 SP 3A-29 50

