

1 Unilift KP 350 A 1



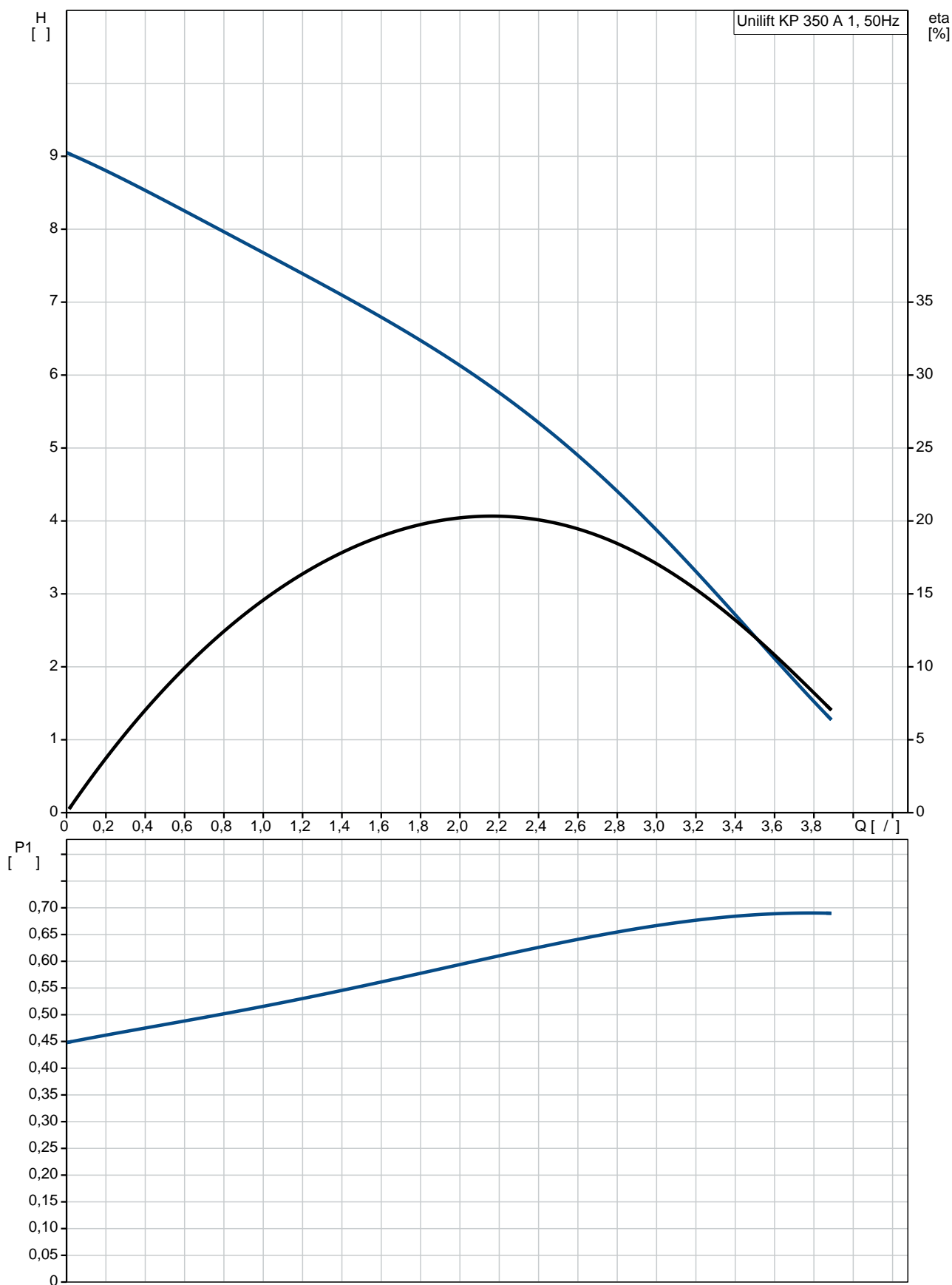
: 013N1800

10

: 0 .. 50 °C  
998.2 / 3

: 10  
 :  
 :  
 DIN W.-Nr. 1.4301  
 AISI 304  
 :  
 DIN W.-Nr. 1.4031  
 AISI 304  
 :  
 :  
 Rp 1 1/4  
 : 7  
 :  
 - P1: 700  
 : 50 Hz  
 : 1 x 220-240  
 : 3.2 A  
 - : 10 /400  
 (IEC 34-5): IP68  
 (IEC 85): F  
 : 10  
 : SCHUKO  
 :  
 :  
 : 8  
 : 8.1  
 : 0.013 <sup>3</sup>  
 Danish VVS No.: 391215036  
 Swedish RSK No.: 5885721  
 Finnish LVI No.: 4822557  
 Norwegian NRF no.: 9040797  
 C : HU  
 : 8413702100

## 013N1800 Unilift KP 350 A 1 50



Unilift KP 350 A 1  
 013N1800  
 EAN : 5700393449381  
 UER 311

Maximum flow: 3.89 /  
 Ma : 3.89 /  
 : 9  
 : 10  
 : A

DIN W.-Nr. 1.4301  
 AISI 304

DIN W.-Nr. 1.4031  
 AISI 304

Rp 1 1/4  
 : 7

0 .. 50 °C  
 998.2 / <sup>3</sup>

- P1: 700  
 : 50 Hz  
 : 1 x 220-240  
 : 3.2 A  
 : 10 /400

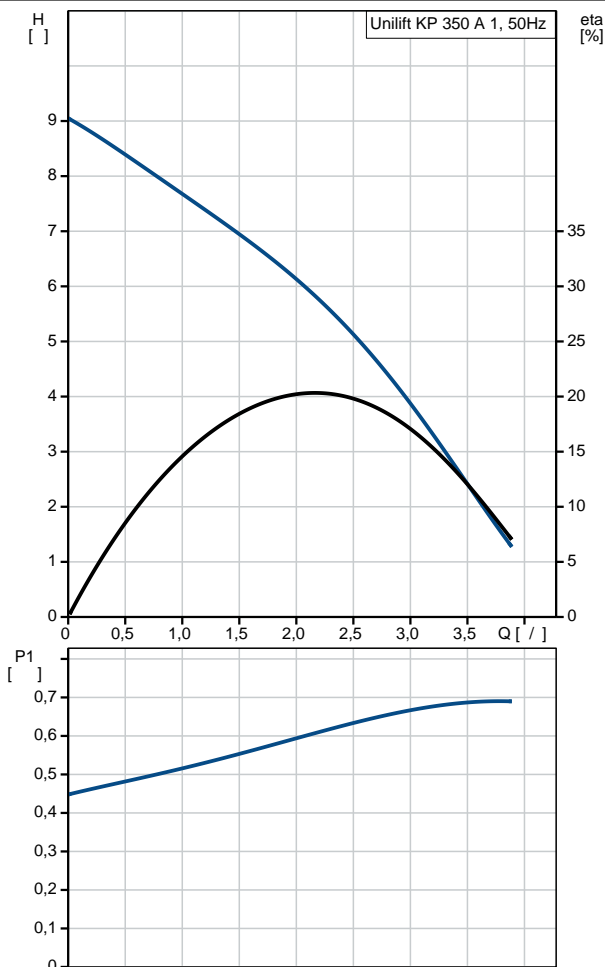
(IEC 34-5): IP68  
 (IEC 85): F  
 : CONTACT

10  
 SCHUKO

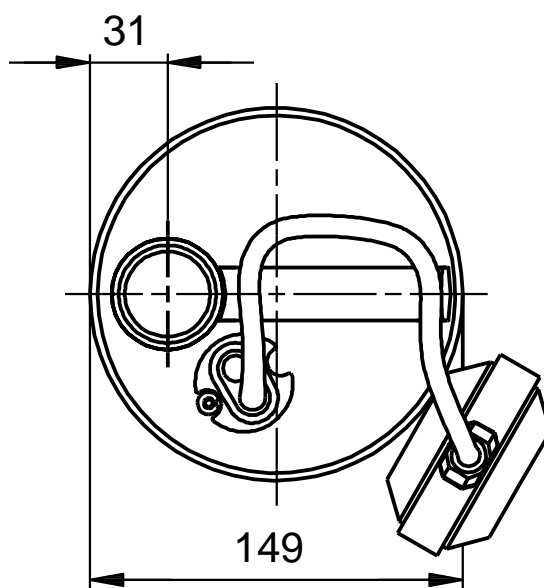
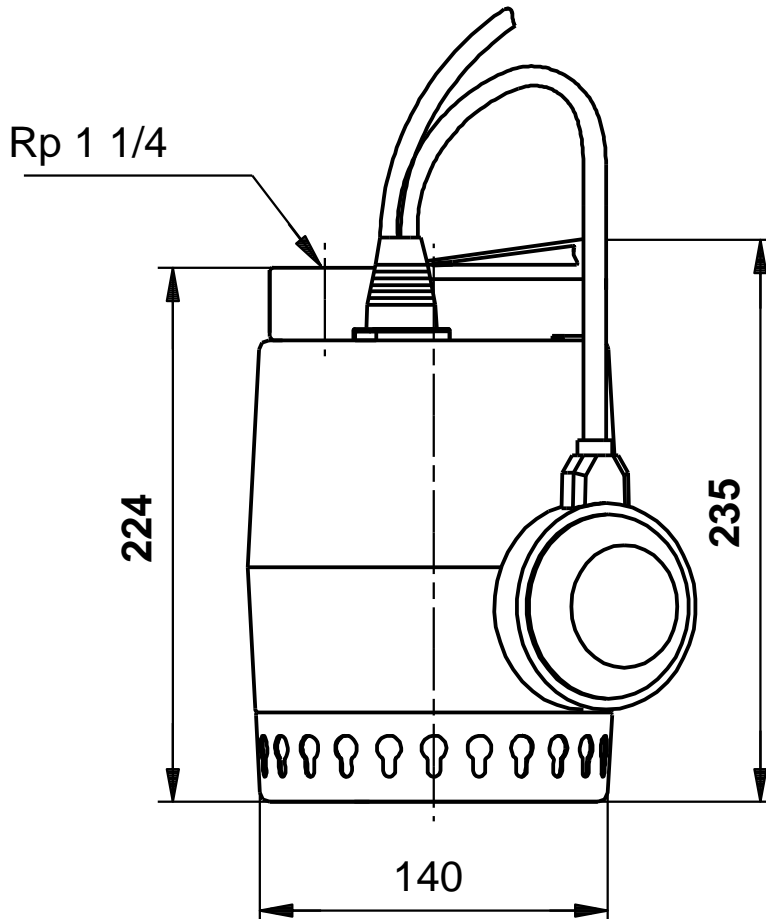
8  
 8.1

0.013 <sup>3</sup>

Danish VVS No.: 391215036  
 Swedish RSK No.: 5885721  
 Finnish LVI No.: 4822557  
 Norwegian NRF no.: 9040797  
 C : HU  
 : 8413702100



## 013N1800 Unilift KP 350 A 1 50



**013N1800 Unilift KP 350 A 1 50**

